

# **Treatment Report**

## **Dolls' House - F.A. Clemons, 'Pendle Hall', 1940s**



**Treatment undertaken by Bronwyn Tulloh, Sarah Babister and Toni Sampson.**

## Contents

Main House, HT 24092.1 .....	5
<i>Front proper left door</i> .....	5
<i>Front proper right door:</i> .....	5
<i>Roof:</i> .....	6
Chimneys .....	7
HT 24092.16; HT 24092.17; HT 24092.18; HT 24092.19 .....	7
Basement, Left, HT 24092.2 .....	7
Basement, Central, HT 24092.3 .....	8
Basement, Right, HT 24092.4 .....	8
Front steps, HT 24092.23 .....	9
Interior rooms .....	10
Room No: 1 - Larder and Store Room .....	10
Room No: 2 – Nursery .....	10
Room No: 3 – Mr & Mrs Proudfoots' Bedroom .....	10
Room No: 4 – Bathroom .....	10
Room No: 5 – Servants' Hall .....	11
Room No: 6 – Kitchen .....	11
Room No: 7 – Pantry .....	11
Room No: 8 – Cellar .....	11
Room No: 9 – Laundry .....	11
Room No: 10 – Linen Room .....	11
Room No: 11 – Withdrawing Room .....	12
Room No: 12 – Entrance Hall .....	12
Room No: 13 – Dining Room .....	12
Room No: 14 – Library .....	13
Room No: 15 – Bathroom .....	13
Room No: 16 – First Landing .....	13
Room No: 17 – Morning Room .....	13
Room No: 18 – Blue Bedroom .....	14
Room No: 19 – Oak Bedroom .....	14
Room No: 20 – Top Landing .....	14
Room No: 21 – Chinese Bedroom .....	14
Window inserts .....	15

**Object:** Pendle Hall, 1940s  
**Reg No:** HT 24092  
**Dimensions:** Overall when assembled & closed: H: 2270 x W: 2185 mm x D: 860

Treatment undertaken from April to November 2019 for exhibition in Mini Mega Model Museum, opening December 2019. Treatment work done by Bronwyn Tulloh, Sarah Babister and Toni Sampson.

**Description:** 21 room dolls house comprised of four main parts. The house has been built primarily from wood and wood products. Additional materials include metal, plastic, glass, textile, paper, paint, plaster and adhesive. The house is a replica of a typical English country house of the Georgian period built around 1740.



Image 1: Pendle Hall assembled BT



Image 2: Pendle Hall assembled and opened BT

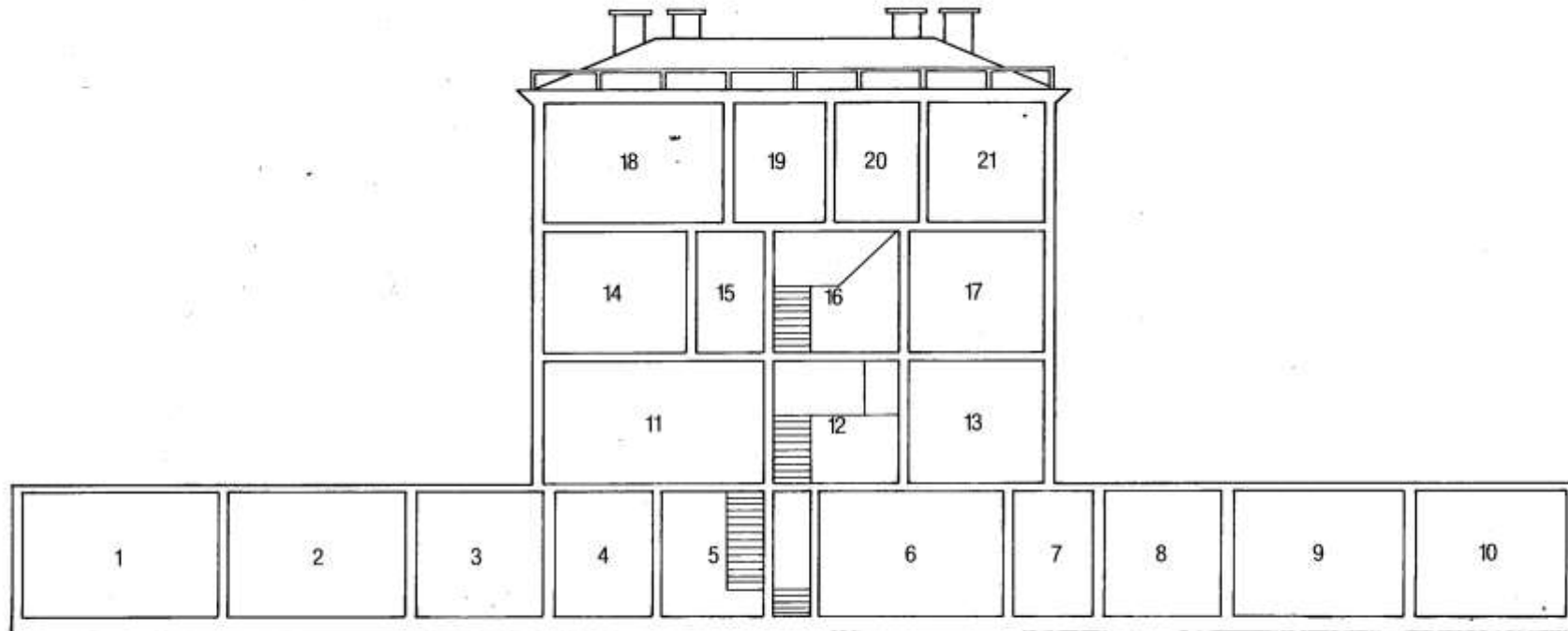
**Provenance:** Pendle Hall was created by Felicity Clemons over a 40 year period beginning in the 1940's. Felicity Clemons, daughter of Sir Geoffrey Syme, Managing Editor of Melbourne's *The Age* and *Leader* was educated in Melbourne before moving to Tasmania upon her marriage to Dr George Maxwell Clemons in 1934, aged 20.

She commenced working on Pendle Hall in the early 1940s, after her daughter Antonia had been sent a small dolls' house by her Grandmother. Felicity felt the house could do with some improvements, a notion which began a 40 year project to transform the house into a large fully-furnished Georgian style country house.

The interior is decorated with over 600 individual pieces, the majority of which were constructed by Felicity's own hands, using reference books and magazines, such as 'Country Life'. She carved, veneered and glued the furniture, using an array of tools which are represented on an associated display board (HT 28156).

Pendle Hall was donated to Museum Victoria in 2010 following closure of White House museum in Westbury, Tasmania where it had been on open display for a number of years.

# PENDLE HALL



## THE ROOMS OF PENDLE HALL

### BASEMENT

1. LARGER AND STORE ROOM
2. NURSERY
3. MR. & MRS. PROUBERT'S BEDROOM
4. BATHROOM
5. SERVANTS' HALL
6. KITCHEN
7. PANTRY
8. CELLAR
9. LAUNDRY
10. LINEN ROOM

### GROUND FLOOR

11. WITHDRAWING ROOM
12. ENTRANCE HALL
13. DINING ROOM

### FIRST FLOOR

14. LIBRARY
15. BATHROOM
16. 1ST LANDING
17. MORNING ROOM

### SECOND FLOOR

18. BLUE BEDROOM
19. OAK BEDROOM
20. TOP LANDING
21. CHINESE BEDROOM

**Plate 1:** Labelled layout showing rooms in Pendle Hall according to Felicity Clemons.

## **Main House, HT 24092.1**

### ***Front proper left door***

#### **Exterior:**

##### **Surface:**

Swab cleaned with 0.4% TAC in deionised water. Cleared with deionised water swabs.

Windows cleaned with microfibre and swabs with 1:1 ethanol:deionised water.

Discoloured overpainted sections overpainted with acrylic.

Screw heads filled with Polyfilla on lower outer corner and outer edge of central register, inpainted with acrylic.

##### **Structural:**

Upper decorative register band adhered with EVA.

Top edge slightly shaved down to improve closing, limited effect.

House door split on proper left vertical jamb adhered with EVA.

#### **Interior:**

##### **Surface:**

Spot cleaning with deionised water swabs where needed

**Structural:** n/a

### ***Front proper right door:***

#### **Exterior:**

##### **Surface:**

Swab cleaned with 0.4% TAC in deionised water. Cleared with deionised water swabs.

Windows cleaned with microfibre and swabs with 1:1 ethanol:deionised water.

Discoloured overpainted sections overpainted with acrylic.

##### **Structural:**

Loose fragment on vertical jamb of lowest window closest to opening readhered with EVA, filled with Polyfilla, inpainted with acrylic.

#### **Interior:**

##### **Surface:**

Spot cleaning with deionised water swabs where needed

**Structural:** n/a

### ***Proper right side:***

##### **Surface:**

Swab cleaned with 0.4% TAC in deionised water. Cleared with deionised water swabs.

Windows cleaned with microfibre and swabs with 1:1 ethanol:deionised water.

Discoloured overpainted sections overpainted with acrylic.

**Structural:** n/a

***Proper left side:*****Surface:**

Swab cleaned with 0.4% TAC in deionised water. Cleared with deionised water swabs.  
Windows cleaned with microfibre and swabs with 1:1 ethanol:deionised water.  
Discoloured overpainted sections overpainted with acrylic.

**Structural:**

Lower front corner filled with Polyfilla, inpainted with acrylic.

***Rear:*****Surface:**

Brush vacuumed.

**Structural:**

Lower proper right corner of house separating, pushed back together and secured from the rear with a screw into floor level between Room 11 and Room 14. Internal section of external wall adhered with EVA.

***Roof:*****Surface:**

Brush vacuumed. Whole surface swab cleaned with 0.4% TAC in deionised water. Cleared with deionised water swabs and rags. Some areas cleaned multiple times.

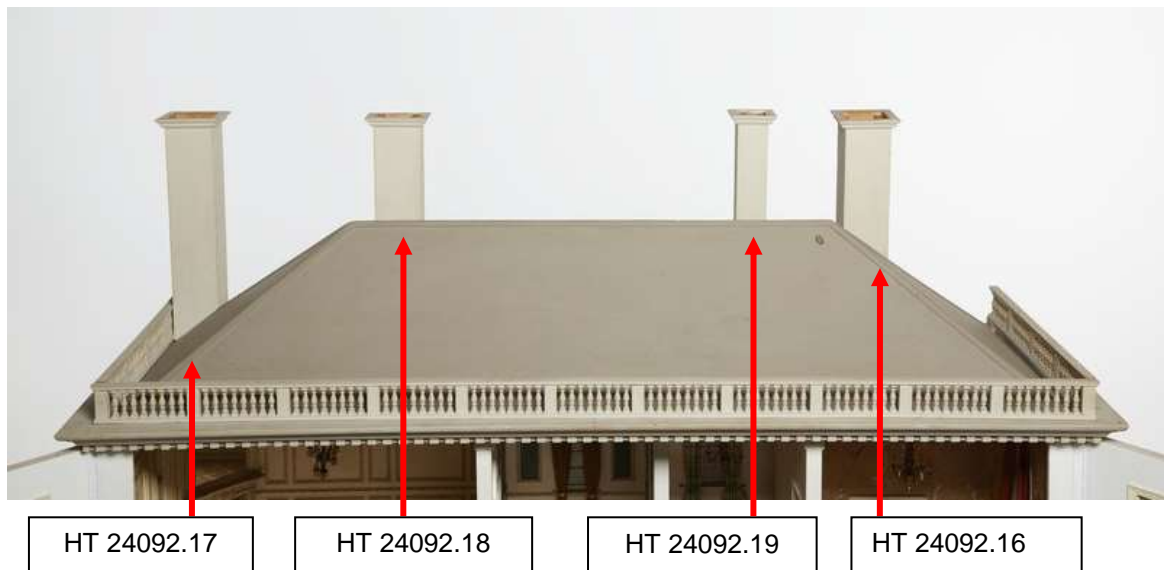
**Structural:**

Balustrade on proper left side secured with new dowel at rear.

**Interior:**

Brush vacuumed.

## Chimneys



**HT 24092.16; HT 24092.17; HT 24092.18; HT 24092.19**

**Surface:**

Swab cleaned with 0.4% TAC in deionised water. Cleared with deionised water swabs.

**Structural:** n/a

### **Basement, Left, HT 24092.2**

**Exterior**

**Front:**

**Surface:**

Swab cleaned with 0.4% TAC in deionised water. Cleared with deionised water swabs.  
Paper on outer edge near back door adhered with EVA.

**Structural:**

Back edge of stairs readhered with EVA.

**Proper right side:**

**Surface:**

Spot cleaning.

**Structural:** n/a

**Top:**

**Surface:**

Swab cleaned with 0.4% TAC in deionised water. Cleared with deionised water swabs.

**Structural:**

Polyfilla fill on screw head, inpainted with acrylic.  
Top edge of balustrade reattached with EVA.

## **Basement, Central, HT 24092.3**

### **Exterior**

#### **Front**

##### **Surface:**

Swab cleaned with 0.4% TAC in deionised water. Cleared with deionised water swabs.  
Inpaint pillars on front face to disguise pen marks.

**Structural:** n/a

#### **Proper left side:**

##### **Surface:**

##### **Structural:**

Part 20 balustrade section loss on corner filled with balsa, adhered with EVA. Fill inpainted with acrylic.

#### **Top:**

##### **Surface:**

Swab cleaned with 0.4% TAC in deionised water. Cleared with deionised water swabs.

##### **Structural:**

Loose screw hole on top filled with balsa strips, EVA  
Polyfilla fill on screw heads, inpainted with acrylic.

#### **Back:**

##### **Surface:**

Swab cleaned with 0.4% TAC in deionised water. Cleared with deionised water swabs.

##### **Structural:**

Loose paper on rear of stairs adhered with EVA.

---

## **Basement, Right, HT 24092.4**

### **Exterior**

#### **Front:**

##### **Surface:**

Swab cleaned with 0.4% TAC in deionised water. Cleared with deionised water swabs.  
Inpaint pillars on front face to disguise pen marks.

**Structural:**

#### **Top:**

##### **Surface:**

Swab cleaned with 0.4% TAC in deionised water. Cleared with deionised water swabs.  
Inpaint discoloured overpaint.

**Structural:** n/a



## **Front steps, HT 24092.23**

### **Surface:**

Swab cleaned with 0.4% TAC in deionised water. Cleared with deionised water swabs.

### **Structural:**

Loose paper on rear of stairs re-adhered with EVA.

---

## **Interior rooms**

### **Room No: 1 - Larder and Store Room**

**Surface:**

Brush vacuum.

Deionised water swabs on all surfaces.

White spirits swabs to reduce staining on floor.

**Structural:** n/a

---

### **Room No: 2 – Nursery**

**Surface:**

Brush vacuum.

Deionised water swabs on all surfaces.

White spirits swabs to reduce staining on floor and shelves.

**Structural:** n/a

---

### **Room No: 3 – Mr & Mrs Proudfoots' Bedroom**

**Surface:**

Brush vacuum.

Deionised water swabs on all surfaces.

Spot cleaned areas with swabs of 0.4% TAC in deionised water. Cleared with deionised water swabs.

White spirits swabs to reduce paint accretions on floor, limited effect.

Ethanol swabs to reduce paint accretions on floor, limited effect.

Pictures removed from back wall, blu tac staining reduced with white spirits. Pictures reattached with B72 in acetone.

**Structural:**

Floor humidified with ethanol and deionised water damp blotter and Reemay, no effect.

Floor heated with hair dryer to soften for reshaping, no effect.

**Other:**

Cover on asbestos around window resealed.

---

### **Room No: 4 – Bathroom**

**Surface:**

Brush vacuum.

Deionised water swabs on all surfaces.

**Structural:** n/a

---

## **Room No: 5 – Servants' Hall**

### **Surface:**

Brush vacuum.  
Deionised water swabs on all surfaces.  
White spirits to remove tape.

### **Structural:**

Front edge floor adhered with EVA.  
Wall panel at bottom of stairs on proper left wall adhered with EVA.  
Window frames on back wall adhered with EVA.

---

## **Room No: 6 – Kitchen**

### **Surface:**

Brush vacuum.  
Deionised water swabs on all surfaces.  
White spirits to remove tape.

**Structural:** n/a

---

## **Room No: 7 – Pantry**

### **Surface:**

Brush vacuum.  
Deionised water swabs on all surfaces.  
White spirits to remove tape from ceiling.

**Structural:** n/a

---

## **Room No: 8 – Cellar**

### **Surface:**

Brush vacuum.  
Deionised water swabs on all surfaces.  
White spirits to remove tape from ceiling.

**Structural:** n/a

---

## **Room No: 9 – Laundry**

### **Surface:**

Brush vacuum.  
Deionised water swabs on all surfaces.  
Spot cleaned areas with swabs of 0.4% TAC in deionised water. Cleared with deionised water swabs.  
Spot clean with white spirits n floor and shelves.

**Structural:** n/a

---

## **Room No: 10 – Linen Room**

### **Surface:**

Brush vacuum.

Deionised water swabs on all surfaces.

Spot cleaned areas with swabs of 0.4% TAC in deionised water. Cleared with deionised water swabs.

Spot clean with white spirits n floor and shelves.

### **Structural:**

Loose paper from walls reattached with EVA.

Paper from outer edge readhered with EVA.

---

## **Room No: 11 – Withdrawing Room**

### **Surface:**

Brush vacuum

Deionised water swabs on all surfaces.

White spirits on floor to reduce staining; on walls to reduce blu tac staining; on ceiling to remove tape.

Yellow spots on walls painted with acrylic.

### **Structural:**

Floor humidified with ethanol and deionised water damp blotter and Reemay.

Floor adhered with EVA.

Inner rear proper right corner and back wall ceiling gaps filled with balsa strips and Polyfilla, painted with acrylic.

---

## **Room No: 12 – Entrance Hall**

### **Surface:**

Brush vacuum

Deionised water swabs on all surfaces.

### **Structural:**

Loose balustrades repositioned

Floor adhered with EVA

Loose black tile pieces readhered with EVA

Four triangle tiles from front edge recreated with reverse side of black acrylic painted Mylar

---

## **Room No: 13 – Dining Room**

### **Surface:**

Brush vacuum

Deionised water swabs on all surfaces.

Flaking paint on ceiling consolidated ith Lascaux 498

Floor cleaned with white spirits swabs

### **Structural:**

Floor adhered with EVA

---

## **Room No: 14 – Library**

### **Surface:**

Brush vacuum  
Deionised water swabs on all surfaces.

### **Structural:**

Ceiling crack filled Polyfilla, painted with acrylic  
Floor humidified with ethanol and deionised water damp blotter and Reemay  
Floor adhered with EVA

---

## **Room No: 15 – Bathroom**

### **Surface:**

Brush vacuum  
Deionised water swabs on all surfaces.  
Tape removed from ceiling with white spirits

### **Structural:**

Floor adhered with EVA

---

## **Room No: 16 – First Landing**

### **Surface:**

Brush vacuum  
Deionised water swabs on all surfaces.

### **Structural:**

Ceiling crack filled Polyfilla, painted with acrylic  
Floor adhered with EVA

---

## **Room No: 17 – Morning Room**

### **Surface:**

Brush vacuum  
Deionised water swabs on all surfaces.  
Floor cleaned with white spirits swabs  
Spot cleaning on walls and ceiling with white spirits, and TAC cleared with deionised water

### **Structural:**

Floor adhered with EVA  
Plastic strips along shelving removed

---

## **Room No: 18 – Blue Bedroom**

### **Surface:**

Brush vacuum

Deionised water swabs on all surfaces.

Floor cleaned with white spirits swabs

Spot cleaning on walls and ceiling with TAC cleared with deionised water

Vertical pillar on proper right side of fireplace inpainted with acrylic

### **Structural:**

Nail hole on pillar between Room 18 and Room 19 filled with Polyfilla, painted with acrylic

Adhesive on front edge of floor cut to enable better access to whole floor undersurface.

Floor humidified with ethanol and deionised water damp blotter and Reemay, flattened under weights.

Floor adhered with EVA

---

## **Room No: 19 – Oak Bedroom**

### **Surface:**

Brush vacuum

Deionised water swabs on all surfaces.

Spot cleaning on walls and ceiling with TAC cleared with deionised water

Door to Room 20 inpainted on discoloured edges.

### **Structural:**

Floor adhered with EVA, only along proper left wall and near door.

---

## **Room No: 20 – Top Landing**

### **Surface:**

Brush vacuum

Deionised water swabs on all surfaces.

Spot cleaning on walls, floor and ceiling with TAC cleared with deionised water

### **Structural:**

Floor adhered with EVA

Nail hole on pillar between Room 20 and Room 21 filled with Polyfilla, painted with acrylic

-----

## **Room No: 21 – Chinese Bedroom**

### **Surface:**

Brush vacuum

Deionised water swabs on all surfaces.

### **Structural:**

Floor humidified with ethanol and deionised water damp blotter and Reemay, flattened under weights.

Floor adhered with EVA

## **Window inserts**

HT 24092.5; HT 24092.6; HT 24092.7; HT 24092.8; HT 24092.9; HT 24092.10; HT 24092.11; HT 24092.12

Deionised water swabs on all surfaces.

Window from Room 2 was missing. The frame was replicated with balsa wood adhered with EVA and painted with acrylic. The image of the Room 9 window scene was imaged and printed, and adhered to the replica window with EVA.