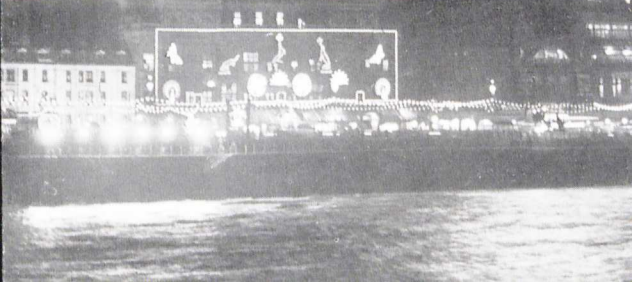


Let's photograph **BLACKPOOL**

— *after dark*

* Blackpool by night presents a blaze of colour. Outdoors, the Illuminations provide countless colour pictures of enchanting brilliance. The Tower offers a completely different but equally attractive challenge to the colour photographer.

* Capture the breathtaking beauty of Blackpool after dark on 'Kodak' colour film.



● The glare of illuminations to the deep shadows at street level contain large differences in brightness. To record detail in the shadows you will require an exposure far too great for the illuminations.

The exposure given will give the best rendering of the bright lights or the illuminations themselves; one stop more exposure will give more shadow detail and a fair-all-over result.

SUBJECT	STILL Colour film and exposure			STILL Black-and-white film and exposure			MOVIE f /No.
	<i>Kodachrome' II Daylight and Type A</i>	<i>'Kodachrome-X' Ektachrome-X' 'Kodacolor-X'</i>	<i>High Speed 'Ektachrome' Daylight and Type B</i>	<i>'Verichrome' Pan and 'Plus-X' Pan</i>	<i>'Tri-X' Pan</i>	<i>'Royal-X' Pan</i>	<i>'Kodachrome' II Daylight and Type A</i>
PROMENADE							
Welcome Arch	f/2 1/30	f/2.8 1/30	f/4 1/30	f/4 1/30	f/5.6 1/60	f/5.6 1/125	f/2.8
General View	f/2 1/15	f/2 1/30	f/2.8 1/30	f/2.8 1/30	f/5.6 1/30	f/8 1/30	f/2.8
Large tableaux, over 20ft distant	f/2 1/30	f/2.8 1/30	f/4 1/30	f/4 1/30	f/5.6 1/60	f/5.6 1/125	f/2.8
Small tableaux, about 10ft distant	f/3.5 1/30	f/3.5 1/60	f/5.6 1/60	f/5.6 1/60	f/5.6 1/125	f/5.6 1/250	f/3.5
Town Hall	f/2 1/30	f/2.8 1/30	f/2.8 1/60	f/2.8 1/60	f/5.6 1/60	f/5.6 1/125	f/2.8
Tower	f/2 1/2	f/2 1/4	f/2 1/8	f/2 1/8	f/2 1/30	f/2.8 1/30	f/1.9
Illuminated Tramcars	f/4.5 1/30	f/4.5 1/60	f/4.5 1/125	f/4.5 1/125	f/6.3 1/125	f/6.3 1/250	f/4
TOWER							
Promenade from Tower Top Eyrie	f/2 1/2	f/2 1/4	f/2 1/8	f/2 1/8	f/2 1/30	f/2.8 1/30	f/1.9
*Roof Gardens Aviary	f/2 1/30	f/2.8 1/30	f/2.8 1/60	f/2.8 1/60	f/5.6 1/60	f/5.6 1/125	f/2.8
*Roof Gardens Zoo							
*Ocean Room	f/2 1/15	f/2 1/30	f/2.8 1/30	f/2.8 1/30	f/5.6 1/30	f/8 1/30	f/2.8
Rainbow Room							
Tower Lounge							
Tower Ballroom	f/2 1/8	f/2 1/15	f/2 1/30	f/2 1/30	f/2.8 1/60	f/4 1/60	f/1.9
Circus	f/2 1/60	f/3.5 1/60	f/3.5 1/125	f/3.5 1/125	f/4.5 1/125	f/4.5 1/250	f/2.8
PLEASURE BEACH							
General view	f/2 1/15	f/2 1/30	f/2.8 1/30	f/2.8 1/30	f/5.6 1/30	f/8 1/30	f/2.8
Large features	f/2 1/30	f/2.8 1/30	f/4 1/30	f/4 1/30	f/5.6 1/60	f/5.6 1/125	f/2.8
Small side shows	f/3.5 1/30	f/3.5 1/60	f/5.6 1/60	f/5.6 1/60	f/5.6 1/125	f/5.6 1/250	f/3.5

*By daylight, expose as for an open shade subject, or use an exposure meter

KODAK LIMITED LONDON

Product names quoted thus - 'Kodak' - are trade marks

Printed in England
TP273/aFS50/8-64

PROMENADE: Six miles of tableaux of many shapes and sizes, but each one a winner on colour film.

Keep an eye open for the illuminated tramcars. The Information Bureau on the Promenade adjacent to North Pier will give you the approximate running times. Include a bird's-eye view of the whole of the Illuminations from the top of the Tower. Preferably take this in the evening before it is fully dark so as to get a little background detail.

TOWER: Photographers have unrestricted use of their cameras in the Tower, except at the Circus. The Roof Gardens Aviary and the Roof Gardens Zoo offer many delightful colour subjects. You can photograph your friends in the Tower Lounge, the Rainbow Room or the Ocean Room, or "take" them dancing in the Tower Ballroom.

Photography is permitted in the Circus subject to the conditions printed on the programme. The pictures you take must be for your own personal use, and must not be reproduced. The third very obvious condition is that flash must not be used.

And as we said earlier, don't forget a bird's-eye view of the Promenade from the Tower Top Eyrie.

PLEASURE BEACH: You can wander at will around the Pleasure Beach. Include people in your shots of the side shows, dodgems, etc., to give "life" to your pictures.