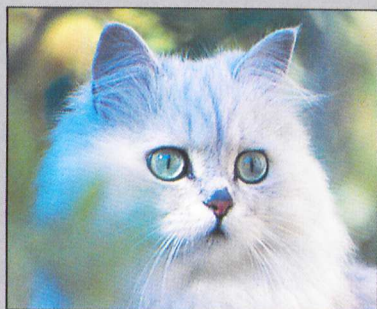
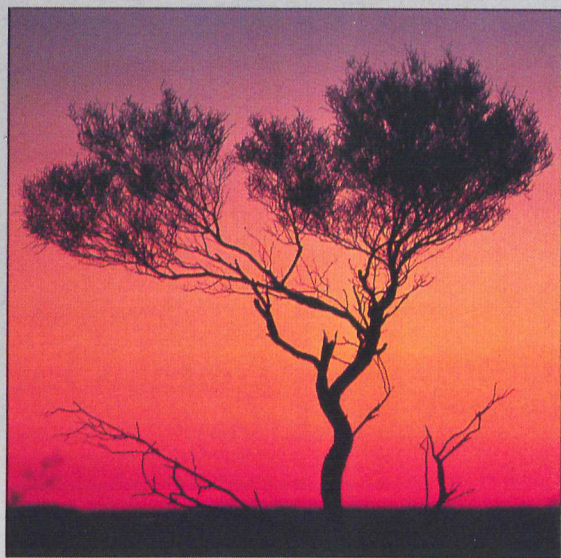
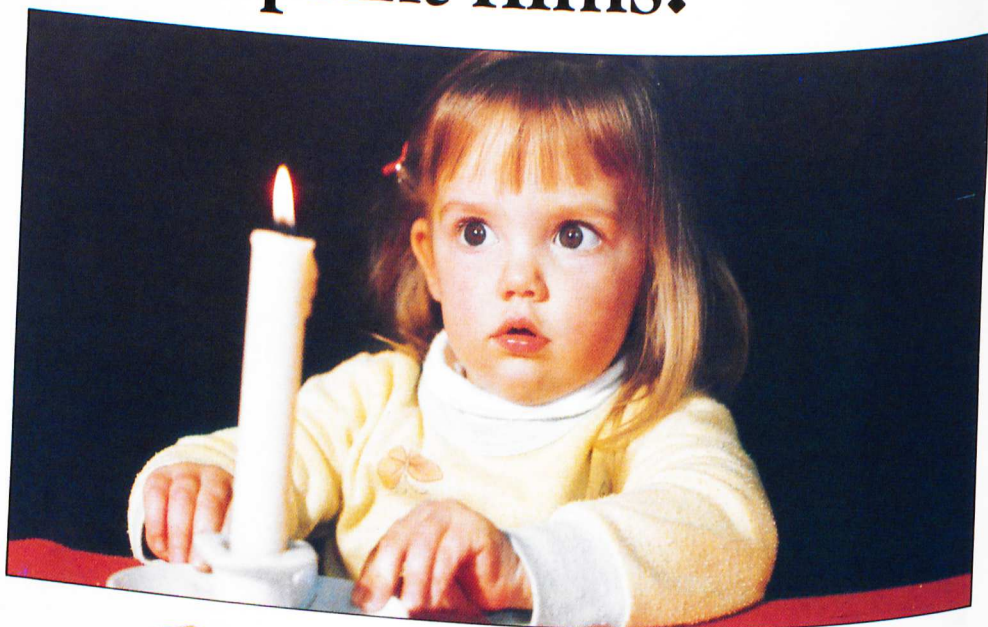


# Kodak films for general use.





# Color print films:



## KODACOLOR VR 100 Film for color prints

Speed	Exposures	Edge Code
100 ISO	12, 24, 36	5094

A general-purpose, color-negative film with very high sharpness, extremely fine grain, and superb color rendition. The film's fast speed of ISO 100 is just right for most picture-taking situations. You can take pictures with this film by daylight, electronic flash, or blue flashbulbs. KODACOLOR VR 100 Film is noted for its wide exposure latitude, which minimizes the effects of exposure errors.

## KODACOLOR VR 200 Film for color prints

Speed	Exposures	Edge Code
200 ISO	See below	5093

Extremely fine grain and high sharpness (similar to VR 100) but twice the speed. A good choice where higher shutter speeds can stop action, reduce camera motion, or increase depth of field for smaller lens openings.

The film is color balanced for daylight, electronic flash or blue flash.

35mm	12, 24, 36	exposures
110	12, 24	exposures
126	12, 24	exposures
Disc	15	exposures
Roll sizes	127, 620, 120	



## KODACOLOR VR 400 Film for color prints

Speed	Exposures	Edge Code
400 ISO	12, 24, 36	5079

A fast color-negative film for photographing dimly lit subjects such as those in existing light, fast action, and subjects that require good depth of field and high shutter speeds, and for extending the flash distance range. The film is color-balanced for daylight, electronic flash, or blue flash. It also has special sensitizing characteristics that give you pleasing pictures when exposed with other light sources, such as household light bulbs and fluorescent lamps, without using filters on your camera.



## KODACOLOR VR 1000 Film for color prints

Speed	Exposures	Edge Code
1000	12, 24, 36	5090

A very fast color negative film with medium sharpness. Kodacolor VR 1000 film offers the photographer far more than just very fast shutter speeds. It allows the use of small lens apertures to extend depth of field. It brings a new versatility to telephoto lenses. It enables good pictures to be taken in low or marginal light conditions. In many cases, it dispenses with the need for flash or auxiliary illumination altogether. As well as all this the film has a wide exposure latitude allowing satisfactory pictures to be obtained from approximately one stop underexposed to three stops overexposed.

Daylight Exposure Table: From 2 hours after sunrise to 2 hours before sunset.

For use with cameras that don't have built-in exposure meters.

Film	Shutter Speed	Bright or Hazy Sun Light Sand or Snow	Bright or Hazy Sun (Distinct Shadows)	Cloudy Bright (No Shadows)	Heavy Overcast	Open Shade
VR 100 (CP)	1/125th sec.	f/16	f/11	f/5.6	f/4	f/4
VR 200 (CL)	1/250th sec.	f/16	f/11	f/5.6	f/4	f/4
VR 400 (CM)	1/500th sec.	f/16	f/11	f/5.6	f/4	f/4
VR 1000 (CF)	1/1000th sec. or 1/500th	f/16 f/22	f/11 f/16	f/5.6 f/8	f/4 f/5.6	f/4 f/5.6

When exposed with other light sources such as electric light bulbs (tungsten light), a warm yellow tone is generally produced; under fluorescent light, blue-green tones are common, and, where more accurate color is necessary, filters (e.g. No. 80A blue for tungsten,

and 80B blue for photolamps) can be used over your camera lens.

These films are designed for producing color prints and enlargements, but color slides and black-and-white prints can also be made from the negatives. (See p. 11.)