

**Kodak**



# KODAK PRODUCTS

## A Counter Catalog



**I**N addition to the photographic equipment and accessories produced for the armed services—"preferred orders"—Kodak can now produce certain Kodaks, Kodak Enlargers, Kodak Accessories, Ciné-Kodaks, Sound Kodascopes, and Professional Photographic Equipment that involve the use of critical metals.

These Kodak products, however, are not now available for general distribution. Factory shipments cannot be made to Kodak dealers until purchasers have fulfilled the government regulations current at the time the order is made out.

This new Kodak Products Catalog will be added to as rapidly as possible until it is an inviting source of information on the entire Kodak products line. The items available are illustrated and described in a manner that is intended to assist the purchaser to make his selection intelligently and conveniently even though it may not be pos-

sible to have an actual demonstration of the products from the Kodak dealers' stock.

In some instances, because of the continuing high level of war production, shortages of certain materials still exist and this situation may necessitate minor changes in some products now being made available to meet non-military needs. Such changes as are necessary will be in the finish or material specifications, will affect physical appearance only, without impairing operating efficiency.

The fact that a product is included in the catalog now does not mean that shipment can always be made promptly although it is our hope that, even with the strict limitations in production, delays will be held to a minimum. Kodak is confident that you will understand the situation and that the Kodak Products Catalog will prove an important aid in selecting the equipment and supplies you need.

★ **EASTMAN KODAK COMPANY** ★

ROCHESTER, N. Y.

KODAKS

PROFESSIONAL

ENLARGERS

KODASLIDE

KODAK

KODAK



# KODAK 35 f/3.5 with Range Finder

**K**ODAK 35 f/3.5 with Range Finder is a miniature type camera loading with 35-mm. Kodak Film.

It is suited equally to the making of fine quality, sharp, black-and-white pictures or brilliant, full-color Kodachrome transparencies.

Kodak 35 f/3.5 with Range Finder is a great Kodak for general all-round picture taking—indoors or outdoors.

In addition, it has found favor in numerous specialized fields. The following suggests its wide range of adaptability.

## FIELDS OF USEFULNESS

**Amateur Picture Takers** make record pictures, scenics, studies, salon-type photographs, and full-color Kodachrome pictures for projection and for Minicolor Prints.

**Lecturers and Educators** make brilliant 2 x 2-inch black-and-white and full-color Kodachrome slides for projection.

**Physicians, Surgeons, Hospital Technicians** make posture studies, contour studies, gait studies in black-and-white and full color. Both prints and 2 x 2-inch slides record conditions, changes, and progress of patients.

**Dental Surgeons** record facial expressions and contours before and after various treatments and corrective methods.

**Researchers** record methods and results.

**Industrial Photographers** make process and progress photographs, studies of methods, etc.

**Printers and Publishers** make illustrations.

**Federal, State, and Municipal Government Men** make photographic studies and analyses of many subjects.

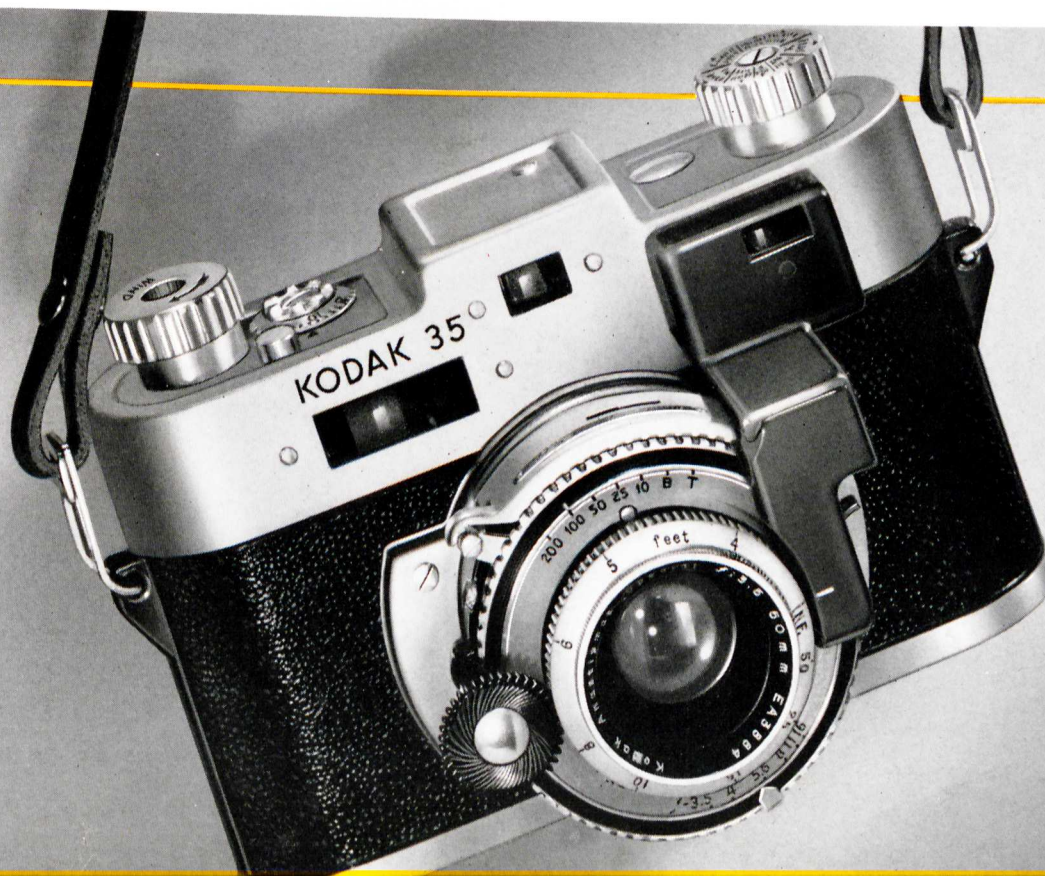
**Naturalists** make general field photographs.

**Producers of Training Films** make preliminary surveys and studies to aid in the preparation of scenarios.

**Insurance Investigators** record car damage and other property damage.

**Real Estate Men** obtain excellent black-and-white or full-color general views of property and, also, photographs of special details—entrance doors, etc.

1-1



CINE-KODAKS—  
16 MM

PROFESSIONAL  
Dist. and Service

ENLARGERS

KODASLIDE  
PROJECTORS

KODAK

KODAK





synchronizer, pre-synchronized and depressed  
attached for synchronized flash pictures  
Flash Lamps.

with Range Finder is a pleasure to use.  
Kodak Combination Lens Attachments  
reased.

advanced and shutter is set  
exposure.

counter operates automatically  
of exposures made.

Dial mounted in the top of  
.

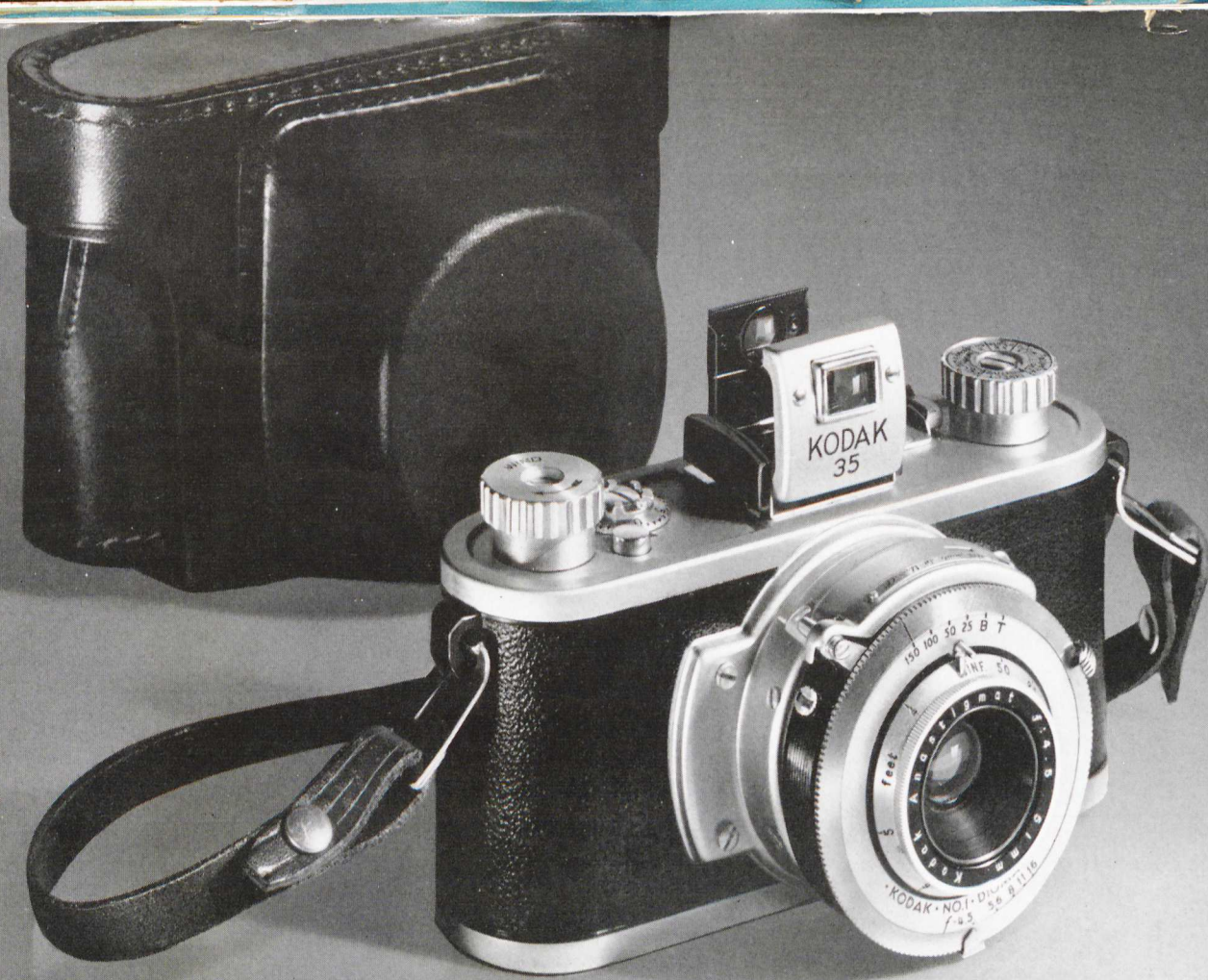
ocket in bottom plate.

ed into case for Kodak Neck

field case available.

. 29 Kodak cable release.

or Synchronizer can be used  
Photoflash photography.  
Series VI Kodak Combination  
1/2-inch Adapter Ring.



# KODAK 35

## with Kodak Anastigmat $f/4.5$ Lens

**K**ODAK 35  $f/4.5$  is a miniature K type camera, loading with 35-mm. Kodak Film.

It can be counted upon to produce excellent black-and-white pictures or full-color Kodachrome transparencies.

Small, well-designed, strong, it is a handy and dependable performer.

Kodak 35  $f/4.5$  is popular for general use indoors or outdoors. Moreover, it has firmly established its worth in certain specialized fields.

### FIELDS OF USEFULNESS

**Amateur Picture Takers** make record pictures, scenics, studies, salon-type photographs, and full-color Kodachrome pictures for projection and for Minicolor Prints.

**Industrial Photographers** make process photographs, construction progress photographs, studies of methods, plant layout studies, etc.

**Research Workers** record methods and results.

**Production Men** make routine record photographs.

**Printers and Publishers** make illustrations.

**Federal, State, and Municipal Government Men** make extensive photographic studies and analyses of many subjects.

**Real Estate Men** obtain general views of property and photographs of special details.

CINE-KODAKS —  
16 MM

PROFESSIONAL  
Prints and Prints

ENLARGERS

KODASLIDE  
PRINTERS

KODAK

KODAK



# KODAK BANTAM

with Kodak Anastigmat Special f/4.5 Lens



**K**ODAK BANTAM f/4.5 is a miniature type camera of unusually small size, yet, as a result of modern photofinishing methods, enlarged prints—2¾ x 4 inches—are generally available. It loads with 8-exposure No. 828 Kodak Film.

One of the most convenient cameras ever designed, it is so compact it fits easily into a pocket.

With its Kodak Anastigmat Special f/4.5 lens it produces black-and-white pictures or full-color Kodachrome transparencies of excellent quality.

Kodak Bantam f/4.5 is widely popular for general picture taking because it is so easy to take along and so easy to use. It can be trusted to get good pictures indoors under artificial light.

Because of its combination of features and its good performance, it is well adapted for use in several fields.

## FIELDS OF USEFULNESS

**Amateur Picture Takers** make record pictures, scenics, and full-color Kodachrome pictures for projection and for Minicolor prints.

**Industrial Photographers** make photographs of manufacturing processes, construction progress photographs, studies of methods, plant layout studies, etc.

**Research Workers** record methods and results.

**Production Men** make routine record photographs.

**Printers and Publishers** make illustrations.

**Federal, State, and Municipal Government Men** make photographic studies and analyses of many subjects.

**Real Estate Men** obtain general views of property and photographs of special details.

CINE-KODAKS —  
16MM

PROFESSIONAL  
Printers and Drivers

ENLARGERS

KODASLIDE  
PROJECTORS

KODAK

KODAK



# KODAK MONITOR SIX-20

## with Kodak Anastigmat Special f/4.5 Lens

**K**ODAK MONITOR SIX-20 with Kodak Anastigmat Special  $f/4.5$  lens is an expertly styled, de luxe folding Kodak. It is a pleasure to use and it has the ability to produce excellent black-and-white pictures. Moreover, when loaded with Kodacolor Film, striking Kodacolor Prints, full-color prints on paper, can be obtained.

Kodak Monitor Six-20 with Kodak Anastigmat Special  $f/4.5$  lens is the camera preferred by many discriminating picture takers who desire equipment of unusual refinement and who want, also, the compactness offered by the folding-type Kodak along with the  $2\frac{1}{4} \times 3\frac{1}{4}$ -inch picture size.

Kodak Monitor Six-20 with Kodak Anastigmat Special  $f/4.5$  lens has the performance capacity that fits it well for many tasks. Among them are the following:

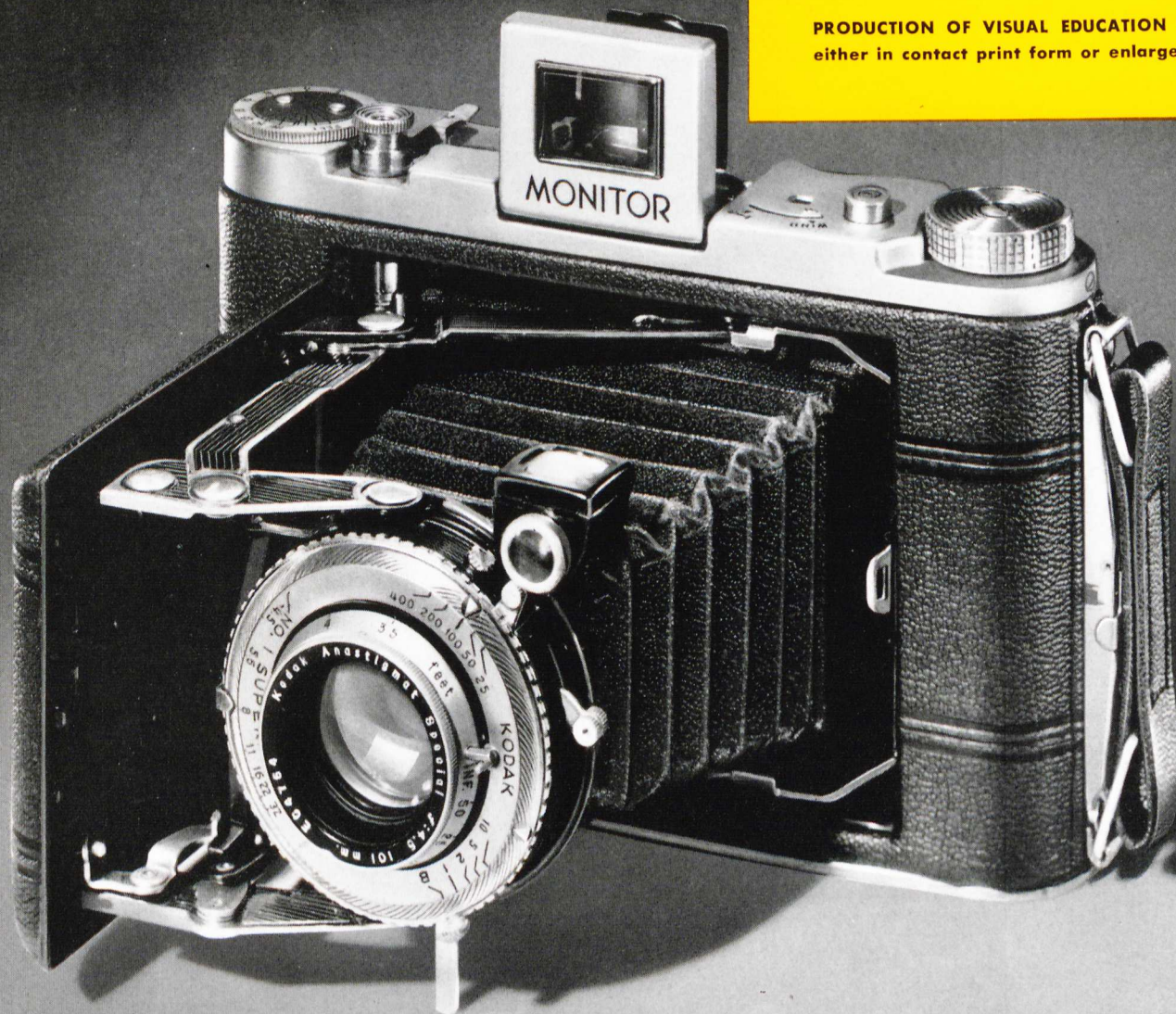
### FIELDS OF USEFULNESS

**AMATEUR PICTURE TAKERS** make fine quality record pictures, scenics, studies, and salon-type photographs; also beautiful full-color snapshots with Kodacolor Film.

**FIELD WORK, SOIL CONSERVATION STUDIES,** method studies, surveys, reports by County Agents and Extension Workers.

**RECORD AND EVIDENCE PICTURES**—frequently with flash synchronizer attached—are made by insurance adjusters.

**PRODUCTION OF VISUAL EDUCATION MATERIAL** either in contact print form or enlargements.



CINE-KODAKS —  
16-MM.

PROFESSIONAL  
Printers and Dryers

ENLARGERS

KODASLIDE  
PROJECTORS

KODAK  
Picture-making Aids

KODAK  
Lens Attachments



# KODAK VIGILANTS SIX-20 and SIX-16

## with Kodak Anastigmat f/4.5 lens

**KODAK VIGILANTS** *f/4.5* are folding Kodaks of moderate price.

They produce black-and-white pictures that are sharp and of good photographic quality. Moreover, when loaded with Kodacolor Film, beautiful Kodacolor Prints, full-color prints on paper, can be obtained.

Kodak Vigilants *f/4.5* are widely used by amateur picture takers who prefer the conventional  $2\frac{1}{4} \times 3\frac{1}{4}$ -inch or  $2\frac{1}{2} \times 4\frac{1}{4}$ -inch picture size and like-sized negatives from which good enlargements can be readily made.

Well engineered and carefully built, they are sturdy, reliable, and convenient to use.

### ★ FIELDS OF USEFULNESS ★

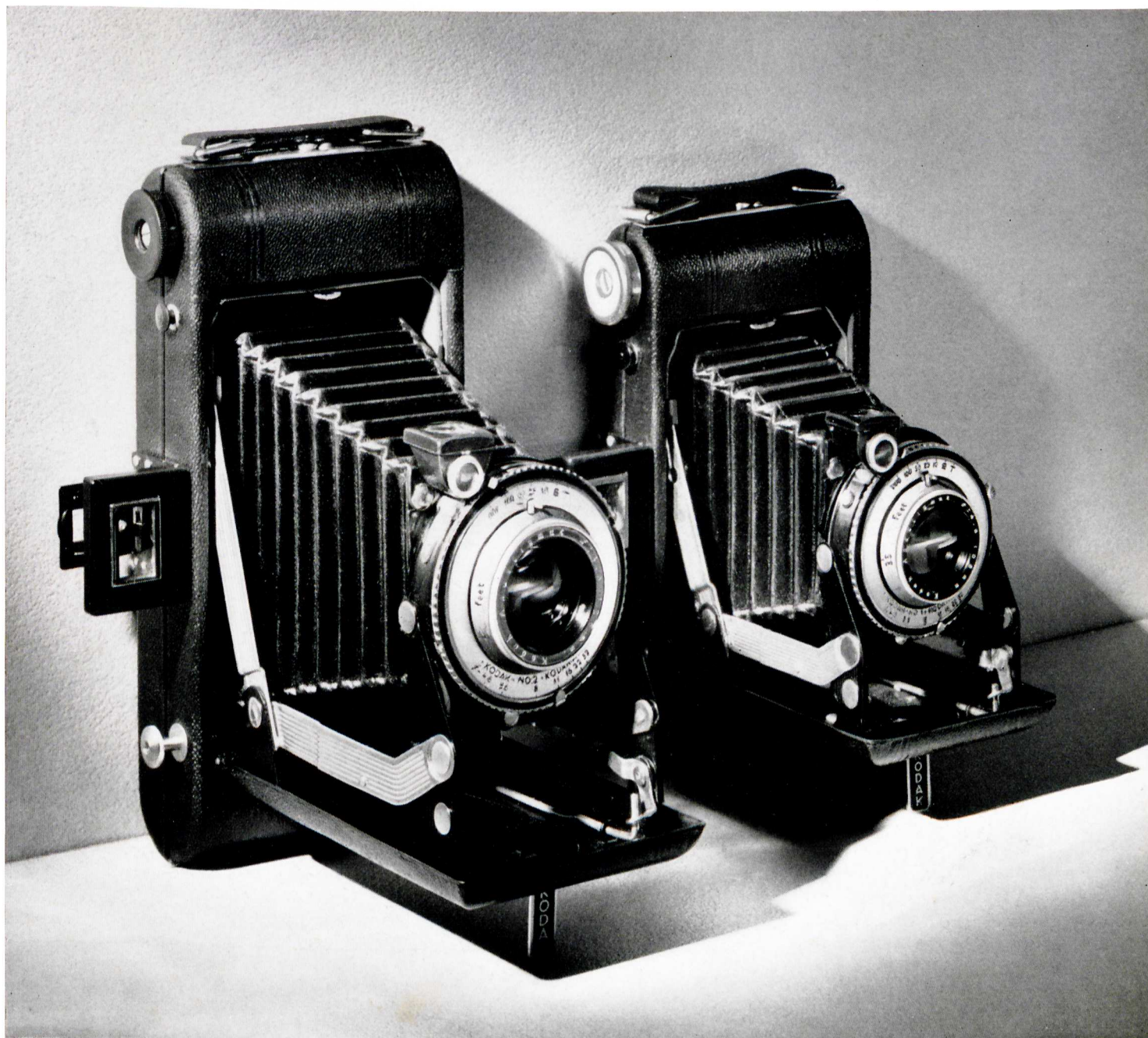
Reasonably compact and easy to carry, Kodak Vigilants *f/4.5* are frequently used for:

**Amateur picture taking**—record snapshots, scenics, full-color snapshots with Kodacolor Film, and so on.

**Field work, surveys, soil conservation studies,** methods-and-results reports, and so on, by County Agents and Extension Workers.

**Record and evidence pictures**—often made with flash synchronizer attached—by insurance adjustors.

**Production of visual education material** either in contact print form or enlargements.



CINE-KODAKS —  
16-MM.

PROFESSIONAL  
Printers and Dryers

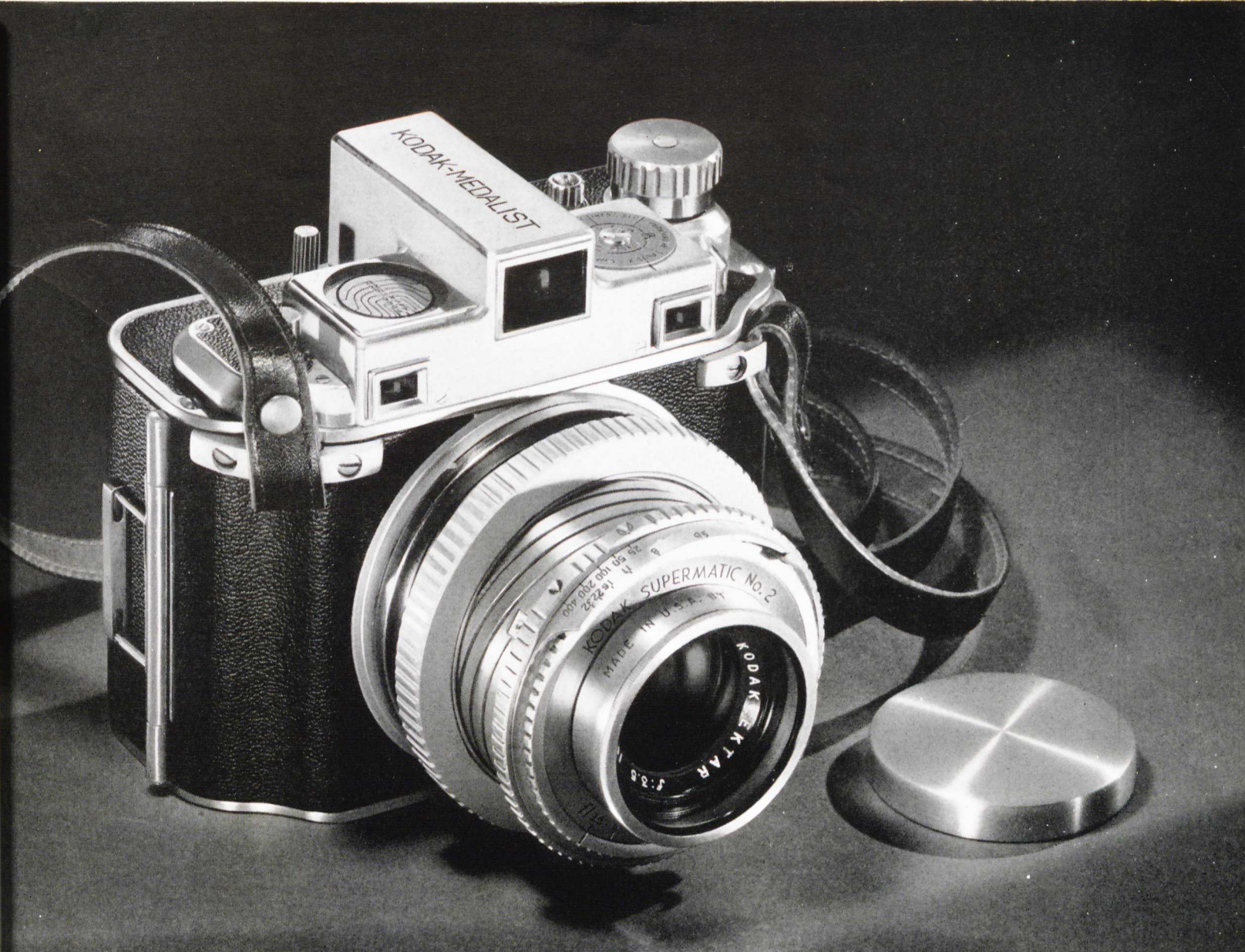
ENLARGERS

KODASLIDE  
PROJECTORS

KODAK  
Picture-making Aids

KODAK  
Lens Attachments





# KODAK MEDALIST

## WITH KODAK EKTAR f/3.5 LENS

**K**ODAK MEDALIST is unlike any other  $2\frac{1}{4} \times 3\frac{1}{4}$  camera both in physical appearance and range of adaptability. It has been designed and produced to provide the most critical workers with superlative equipment—and it does that, brilliantly.

Kodak Medalist not only makes black-and-white roll-film negatives of surpassing quality, but full-color pictures with Kodacolor Film, full-color  $2\frac{1}{4} \times 3\frac{1}{4}$  Kodachrome trans-

parencies with Kodachrome Professional Film, and black-and-white pictures with a variety of sheet films, film packs, and plates.

Kodak Medalist, in addition to possessing numerous unusual features and refinements that set it apart, is a rugged, highly portable, all-purpose camera. Further, it can be depended upon for outstanding performance in many specialized fields. Some of them are suggested on the next page.

CINE-KODAKS—  
16-MM.

PROFESSIONAL  
Printers and Drivers

ENLARGERS

KODASLIDE  
PROJECTORS

KODAK  
Picture-making Aids

KODAK  
Lens Attachments



★ **Section 1 KODAKS**

**PRICE LIST**

All prices subject to change without notice

	°RETAIL PRICE	ADD. TAX
★		
<b>KODAK 35's</b>		
Kodak 35 with Range Finder, with Kodak Anastigmat Special <i>f</i> /3.5 lens, Kodamatic self-timer shutter, coupled range finder, neck strap.....	\$ 50.50	\$ 4.406
Kodak 35 with Kodak Anastigmat <i>f</i> /4.5 lens, Diomatic self-timer shutter, neck strap .....	26.00	2.268
<b>KODAK BANTAM</b>		
With Kodak Anastigmat Special <i>f</i> /4.5 lens .....	25.00	2.181
<b>KODAK MONITOR SIX-20</b>		
With Kodak Anastigmat Special <i>f</i> /4.5 lens, Supermatic shutter.....	45.50	3.969
<b>KODAK VIGILANT SIX-20</b>		
With Kodak Anastigmat <i>f</i> /4.5 lens, Kodamatic shutter.....	26.50	2.312
<b>KODAK VIGILANT SIX-16</b>		
With Kodak Anastigmat <i>f</i> /4.5 lens, Kodamatic shutter.....	30.85	2.691
<b>KODAK MEDALIST</b>		
With Kodak Ektar <i>f</i> /3.5 lens, Supermatic shutter, Adapter Ring Insert, lens cap, neck strap.....	176.00	16.500

<sup>o</sup>Includes Oct. 1941 U. S. Manufacturers' Excise Tax.

**EASTMAN KODAK COMPANY, ROCHESTER, N. Y.**



CINE-KODAKS—  
16-MM.

PROFESSIONAL  
Printers and Dryers

ENLARGERS

KODASLIDE  
PROJECTORS

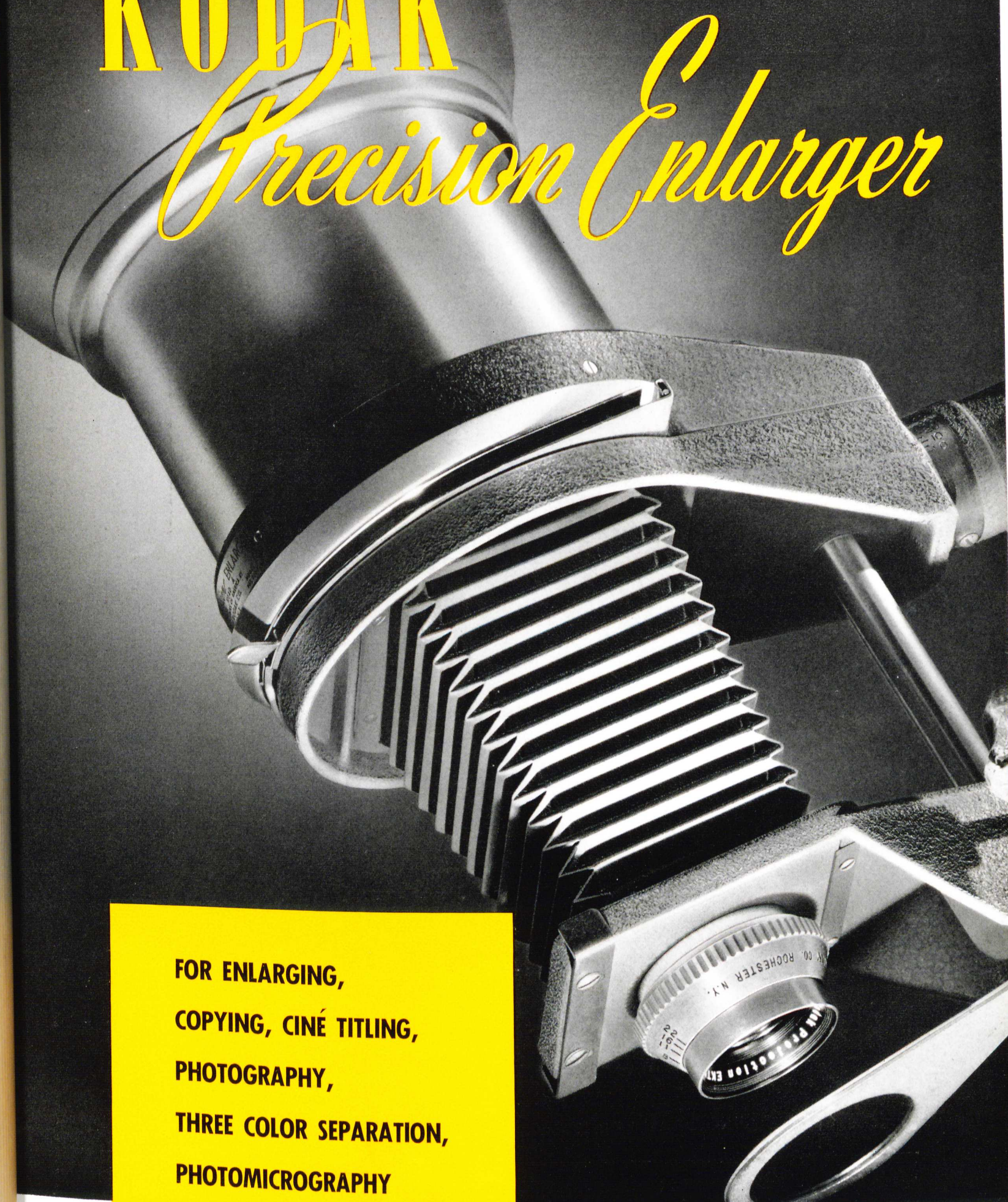
KODAK  
Picture-making Aids

KODAK  
Lens Attachments



# KODAK

# *Precision Enlarger*



FOR ENLARGING,  
COPYING, CINÉ TITLING,  
PHOTOGRAPHY,  
THREE COLOR SEPARATION,  
PHOTOMICROGRAPHY

CINE-KODAKS —  
16-MM.

PROFESSIONAL  
Printers and Dryers

PROFESSIONAL  
Lenses and Filters

KODASLIDE  
PROJECTORS

KODAK  
Picture-making Aids

KODAK  
Lens Attachments



★ **Section 4 ENLARGERS**

**PRICE LIST**

All prices subject to change without notice

	°RETAIL PRICE	ADD. TAX
<b>KODAK PRECISION ENLARGER—A ASSEMBLY (A1000)</b>		
(for negatives up to and including 2¼ x 3¼ in.), consisting of Stand Assembly, Condenser Head A with No. 2, 3, or 4 Condenser A, No. 212 Mazda Photo Enlarger lamp, one Glassless Negative Carrier A, and Bellows Assembly A, without lens . . . . .	\$ 72.00	\$ 6.750
<b>ITEMS FOR A ASSEMBLY</b>		
Enlarging Head A consisting of Condenser Head A (see next item) and one Bellows Assembly A, without lens . . . . .	45.35	4.250
Condenser Head A (A1001) with one No. 2, 3, or 4 Condenser A, one No. 212 Mazda Photo Enlarger lamp, and one Glassless Negative Carrier A . . . . .	24.00	2.250
No. 2 Condenser A (A1005) . . . . .	7.50†	.....
No. 3 Condenser A (A1006) . . . . .	7.50†	.....
No. 4 Condenser A (A1007) . . . . .	7.50†	.....
Bellows Assembly A (A1002) . . . . .	21.35	2.000
Kodak 2-inch Projection Anastigmat f/6.3 lens (A1035) . . . . .	8.00	.750
Kodak 2-inch Projection Ektar f/4.5 lens (A1004) . . . . .	26.65	2.498
Glassless Negative Carrier A (available in the following sizes):		
35-mm., 24 x 36-mm. (A1018) . . . . .	4.25	.398
Bantam, 28 x 40-mm. (A1019) . . . . .	4.25	.398
½-Vest Pocket, 1 ¾ x 1 ⅞ (A1020) . . . . .	4.25	.398
1 ⅝ x 1 ⅝ (A1041) . . . . .	4.25	.398
Duo Six-20, 1 ⅝ x 2¼ (A1021) . . . . .	4.25	.398
Vest Pocket, 1 ⅝ x 2½ (A1022) . . . . .	4.25	.398
2¼ x 2¼ (A1023) . . . . .	4.25	.398
2¼ x 2½ (A1024) . . . . .	4.25	.398
2¼ x 3¼ (roll film) (A1025) . . . . .	4.25	.398
2¼ x 3¼ (sheet film) (A1037) . . . . .	4.25	.398
Combination Negative Carrier A (A1008) . . . . .	5.35	.501
Masks for Combination Negative Carrier A		
35-mm., 24 x 36-mm. (A1009) . . . . .	.25	.023
Bantam, 28 x 40-mm. (A1010) . . . . .	.25	.023
½-Vest Pocket, 1 ¾ x 1 ⅞ (A1011) . . . . .	.25	.023
1 ⅝ x 1 ⅝ (A1042) . . . . .	.25	.023
Duo Six-20, 1 ⅝ x 2¼ (A1012) . . . . .	.25	.023
Vest Pocket, 1 ⅝ x 2½ (A1013) . . . . .	.25	.023
2¼ x 2¼ (A1014) . . . . .	.25	.023
2¼ x 2½ (A1015) . . . . .	.25	.023
2¼ x 3¼ (roll film) (A1016) . . . . .	.25	.023
Blank (A1017) . . . . .	.25	.023
Roll Film Support Cups A (A1039) . . . . .	3.20	.300
35-mm. Kodachrome Transparency Holder A (A1026) . . . . .	10.65	.998
Bantam Kodachrome Transparency Holder A (A1027) . . . . .	10.65	.998
Camera Back Adapter A (for 2¼ x 3¼ Kodak Combination Film and Plate Holders) (A1030) . . . . .	10.65	.998
Kodak Combination Film and Plate Holder, 2¼ x 3¼ . . . . .	1.60	.150
Camera Adapter A (A1044) . . . . .	10.65	.998
Lantern Slide Adapter A (A1036) . . . . .	5.85	.548
35-mm. Kodachrome Adapter A (also for Recomar 18) . . . . .	25.05	2.348
Bantam Kodachrome Adapter A (also for Recomar 18) . . . . .	25.05	2.348
Ground Glass Focusing Back A (A1031) . . . . .	2.15	.201

enlarger

ocket arm, and may be read  
the 17-inch chromium-plated  
rting column. A 2-inch projection  
3 lens in lens tube especially  
is available. The baseboard  
ng is constructed of fibrous  
ed, sealed under pressure. The  
s 2½ to 9 diameters—  
or wall. One Glassless Negative  
-mm. or Bantam negatives is  
arger. This high-quality equip-  
king along on trips and making  
ate. Too, it is a compact photo  
space is restricted.



CINE-KODAKS —  
16-MM.

PROFESSIONAL  
Printers and Dryers

PROFESSIONAL  
Lenses and Filters

KODASLIDE  
PROJECTORS

KODAK  
Picture-making Aids

KODAK  
Lens Attachments



No. 1 Lens Board A (for Leica lenses) (A1033)	3.00†
No. 2 Lens Board A (for Contax lenses) (A1034)	4.00†
Exposure Meter Bracket A (A1032)	10.00†
Dust Cover A (A1038)	2.25†

**KODAK PRECISION ENLARGER—B ASSEMBLY (B1000)**

(for negatives up to and including 4 x 5½ in.), consisting of Stand Assembly, Power-Cooled Lamphouse Assembly B, Adjustable Negative Mask B, No. 212 Mazda Photo Enlarger lamp, Combination Negative Carrier B, and Bellows Assembly B, without lens	95.45
--	-------

**ITEMS FOR B ASSEMBLY**

Enlarging Head B consisting of Power-Cooled Lamphouse Assembly B (see next item) and one Bellows Assembly B, without lens	68.80
Power-Cooled Lamphouse Assembly B (B1001) with one No. 212 Mazda Photo Enlarger lamp, one Combination Negative Carrier B, and one Adjustable Negative Mask B	44.80
Power-Cooling Unit B (B1015)	14.50†
Bellows Assembly B (B1002)	24.00
Kodak 5-inch Projection Anastigmat <i>f</i> 6.3 lens (B1003)	26.65
Kodak 5 <sup>3</sup> / <sub>8</sub> -inch Projection Anastigmat <i>f</i> 4.5 lens (B1004)	36.00
Kodak 6 <sup>3</sup> / <sub>8</sub> -inch Projection Anastigmat <i>f</i> 4.5 lens (B1005)	39.45
Kodak 127-mm. Ektar <i>f</i> 4.7 lens in Supermatic shutter in Kodak Precision Enlarger Lens Board (B1014)	47.45
Camera Back Adapter B (for 3¼ x 4¼ Graflex Holder) (B1012)	13.35
Camera Back Adapter B (for 3¼ x 4¼ Kodak Combination Film and Plate Holder) (B1008)	13.35
Kodak Combination Film and Plate Holder, 3¼ x 4¼	1.85
Ground Glass Focusing Back B (B1009)	3.20
35-mm. Kodachrome Adapter B (also for Recomar 33)	25.05
Bantam Kodachrome Adapter B (also for Recomar 33)	25.05
Dust Cover B (B1011)	2.25†

**COMBINATION ITEMS FOR EITHER A OR B ASSEMBLIES**

Stand Assembly (C1000)	26.65
Kodak Masking Paper Board (C1005)	16.00
Tilting Legs for Kodak Masking Paper Board (C1006)	6.95
Tricolor Filter Holder with Gelatin Film Filters (C1015)	5.35
Tripod Adapter (C1014)	3.75
No. 0 Lens Board (not drilled or tapped) (C1008)	1.00†
Tilting Lens Mount (C1017)	10.65
Adapter Ring No. 2 (A1043)	1.35
Adapter Ring No. 3 (C1018)	1.35
Adapter Ring No. 5 (B1013)	1.35
Copying Lights, without lamps (C1007)	10.65
Kodak 3-inch Projection Ektar <i>f</i> 4.5 lens (C1003)	32.00
Kodak 4-inch Projection Ektar <i>f</i> 4.5 lens (C1004)	37.35
Kodak 101-mm. Ektar <i>f</i> 4.5 lens in Supermatic shutter, in Precision Enlarger Lens Board (C1019)	41.05
Microscope Attachment (C1009)	3.20

**KODAK PORTABLE MINIATURE ENLARGER**

with one Glassless Negative Carrier and No. 111 Mazda Photo Enlarger lamp, without lens or case	29.35
Kodak 2-inch Projection Anastigmat <i>f</i> 6.3 lens in lens tube	8.00
Carryall Case	10.00†

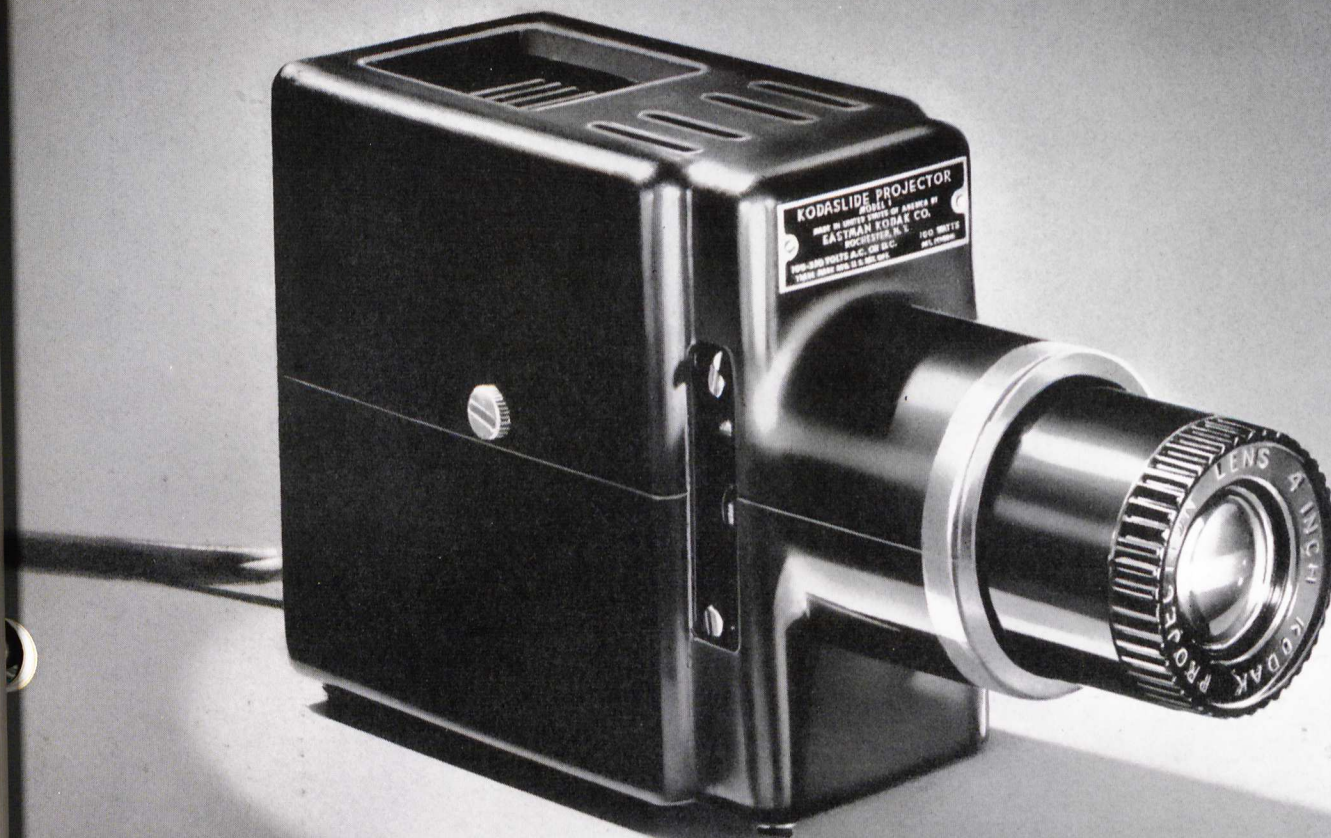
° Includes Oct. 1911 U. S. Manufacturers' Excise Tax.

† Not subject to U. S. Manufacturers' Excise Tax.



# KODASLIDE PROJECTOR

## MODEL 1



**Kodaslide Projector, Model 1**—including 4-inch  $f/3.5$  lens, 75-watt lamp, cord, and switch. An inexpensive quality projector for home viewing of Kodachrome transparencies or black-and-white film positives made with Kodak 35's, Kodak Bantams, and similar miniature cameras. It projects excellent images up to 40 inches wide. It is made of molded plastic with a rich black finish. The base measures  $2\frac{7}{8}$  x  $5\frac{1}{4}$  inches; height,  $4\frac{5}{8}$  inches. It accepts transparencies in Kodaslide and 2 x 2-inch glass slides. Lens barrel moves in and out to focus. Kodaslide inserts are inserted in the slide opening and each is pushed by its successor to the opposite side for removal. Improved illumination system with spherical glass reflector and condensing lenses is more efficient in proportion to the illumination than any previously used. Overheating of the slides during projection is prevented by heat-absorbing glass. The body of the projector is ventilated for cool operation.



The Projecto Case, an accessory, serves not only as a convenient storage place but also as a rigid base for projection. A tripod screw attached to the case holds the projector solidly in position on the cover, while an elevating screw permits the cover to be tilted to correct projection position.

CINE-KODAKS —  
16-MM.

PROFESSIONAL  
Printers and Dryers

PROFESSIONAL  
Lenses and Filters

SOUND  
KODASCOPES

KODAK  
Picture-making Aids

KODAK  
Lens Attachments



# ★ Section 5 KODASLIDE PROJECTORS

## PRICE LIST

*All prices subject to change without notice*

	★	†RETAIL PRICE	ADD. TAX
<b>KODASLIDE PROJECTOR, MODEL 1,</b>			
including 4-inch <i>f</i> /3.5 lens, 75-watt lamp, cord and switch . . . . .		\$ 18.50	. . . . .
<b>KODASLIDE PROJECTOR, MODEL 2A,</b>			
including 5-inch <i>f</i> /3.5 lens, 150-watt lamp, cord and switch . . . . .		36.50	. . . . .
7½-inch <i>f</i> /4.5 lens for Kodaslide Projector, Models 2, and 2A . . . . .		28.50	. . . . .
<b>ACCESSORIES</b>			
Slide Carrier for Kodaslide Projector, Model 1 . . . . .		1.75	. . . . .
Kodaslide Changer for Kodaslide Projector, Models 1, 2, and 2A . . . . .		12.00	. . . . .
Projecto Case for Kodaslide Projector, Model 1 . . . . .		4.00	. . . . .
Combination Case for Kodaslide Projector, Models 2 and 2A . . . . .		8.00	. . . . .
Projecto Case for Kodaslide Projector, Models 2 and 2A . . . . .		18.50	. . . . .
Kodaslide Dissolve Control Outfit . . . . .		37.50	. . . . .
Glass Slide Materials—			
Kodak Slide Cover Glass, for 2 x 2-inch slides, box of 36 . . . . .		.50	. . . . .
Kodak Masks for Glass Slides, 2 x 2 inches:			
35-mm., box of 50 . . . . .		.35	. . . . .
Bantam, box of 50 . . . . .		.35	. . . . .
Kodak Binding Tape, 10-yard roll, black, ⅜-inch width . . . . .		.20	. . . . .
Kodaslide Adapting Frames, pkg. of 6 . . . . .		.60	. . . . .
35-mm. Ready-Mounts, box of 50 . . . . .		1.50	. . . . .
Bantam Ready-Mounts, box of 50 . . . . .		1.50	. . . . .
Kodaslide Adapter for 3¼ x 4 projectors . . . . .		1.50	. . . . .
Kodak Slide Kits			
for 35-mm. transparencies . . . . .		1.95	. . . . .
for Bantam transparencies . . . . .		1.95	. . . . .
Kodaslide Sequence File for Kodaslides or 2 x 2-inch glass slides . . . . .		2.00	. . . . .

†Not subject to U. S. Manufacturers' Excise Tax.

EASTMAN KODAK COMPANY, ROCHESTER, N. Y.

CINE-KODAKS —  
16-MM.

PROFESSIONAL  
Printers and Dryers

PROFESSIONAL  
Lenses and Filters

SOUND  
KODASCOPES

KODAK  
Picture-making Aids

KODAK  
Lens Attachments



# KODAK PICTURE-MAKING AIDS

**Kodak All-Metal Printer, Model 2**—This printer is a compact, convenient unit for making contact prints from negatives of all sizes up to and including  $3\frac{1}{4} \times 5\frac{1}{2}$  and  $4 \times 5$  inches. Miniature-camera owners will be interested in its special film and paper guides for 35-mm. strip printing. The print size and

margin width may be controlled by four independently adjustable margin masks. In use, the printer's ruby lamp supplies ample safe illumination for handling the paper and reading the size of the printing area. Important features of this printer include illuminated masking scales and calibrated margin guides.



CINE-KODAKS —  
16-MM.

PROFESSIONAL  
Printers and Dryers

PROFESSIONAL  
Lenses and Filters

SOUND  
KODASCOPES

PROFESSIONAL  
SUNDRIES

KODAK  
Lens Attachments



# ★ Section 6 PICTURE MAKING AIDS

## PRICE LIST

All prices subject to change without notice

	RETAIL PRICE	ADD. TAX
	★	
Kodak All-Metal Printer, Model 2.....	\$ 19.75	\$ 1.851
Brownie Safelight Lamp, Model D.....	2.15	.201
Kodak Darkroom Lamp.....	3.20	.300
Kodak Adjustable Safelight Lamp.....	4.80	.450
Kodak Utility Safelight Lamp, Model C.....	6.93	.650
Accessory Bracket for Kodak Utility Safelight Lamp, Model C.....	1.60	.150
T.B.I. Cable Release.....	1.05	.098
Eastko Trimmer:	7.50†	
No. 4, 12-inch.....	8.50†	
No. 5, 15-inch.....	5.00†	
Kodak Automatic Tray Siphon.....	5.20†	
Kodak Timer.....	.45	.042
Improved Kodak Film Clip (with lead weight).....	.10	.009
Kodak Junior Film Clip.....	3.75	.351
Kodak Film Pack Tank No. 2.....	7.20	.675
Kodak Junior Synchronizer.....	4.50†	
Kodak Studio Scales.....	5.87	.551
Kodak Double Print Roller, 8-inch.....	.37	.035
Flexo Print Roller.....		
Kodak Combination Film and Plate Holder:	1.60	.150
2¼ x 3¼.....	1.85	.173
3¼ x 4¼.....	1.60	.150
6.5 x 9 cm.....	1.85	.173
9 x 12 cm.....	1.60	.150
Film Pack Developing Hanger.....	.30	.029
Kodak Sheet Film Developing Hanger.....		
Kodak Film Pack Adapter:	5.05	.473
2¼ x 3¼.....	4.80	.450
5 x 7.....	4.00	.375
Kodak Miniature Paper Board.....	1.85	.173
Kodapod.....	6.95	.651
Kodak 8 x 10 Metal Paper Board.....	1.30	
Kodak Thermometer Stirring Rod.....	.95	
Kodak Tank and Tray Thermometer.....		
Kodak Dry Mounting Tissue:	.30†	
1⅞ x 2¾, per gross.....	.30†	
2½ x 2½, per gross.....	.30†	
2½ x 3½, per gross.....	.45†	
2¾ x 4½, per gross.....	.45†	
3⅞ x 5⅞, per gross.....	.45†	
3½ x 4½, per gross.....	.60†	
3½ x 5¾, per gross.....	.60†	
4 x 5, per gross.....	.80†	
4 x 6, per gross.....	.20†	
5 x 7, per dozen.....	.75†	
Kodak Transparent Water Color Outfit.....	3.75†	
Kodak Transparent Oil Color Outfit.....	2.00†	
Kodak Eight-Tube Oil Color Set.....		

°Includes Oct. 1941 U. S. Manufacturers' Excise Tax.

†Not subject to U. S. Manufacturers' Excise Tax.

**EASTMAN KODAK COMPANY, ROCHESTER, N. Y.**

CINE-KODAKS —  
16-MM.

PROFESSIONAL  
Printers and Dryers

PROFESSIONAL  
Lenses and Filters

SOUND  
KODASCOPES

PROFESSIONAL  
SUNDRIES

KODAK  
Lens Attachments

Color Outfit—Water  
color prints, lantern slides,  
push and a booklet of  
colors. Each leaf has  
double color stamps.

Oil Color Outfit—The pigments  
are ground to insure  
the colors will affect the  
standard colors, which  
to the chart supplied.  
The complete outfit  
includes fluid, transparent  
medium, applicators, and  
instruction book.

Oil Color Outfit—The pigments  
are ground to insure  
the colors will affect the  
standard colors, which  
to the chart supplied.  
The complete outfit  
includes fluid, transparent  
medium, applicators, and  
instruction book.



Dry Mounting Tissue



Light-Tube Oil Color Set



# ★ Section 6 PICTURE-MAKING AIDS (continued)

## PRICE LIST

All prices subject to change without notice

	★	°RETAIL PRICE	ADD. TAX
<b>Kodak Photo Paste:</b>			
2-oz. tube .....		\$.15†	\$. .....
1½-oz. tube .....		.10†	.....
4-oz. jar .....		.25†	.....
<b>Kodak Rapid Mounting Cement:</b>			
½-oz. tube .....		.15†	.....
Kodak Day-Load Tank .....		7.40	.695
<b>Kodak Hard Rubber Tanks:</b>			
4 x 5 .....		2.55	.....
5 x 7 .....		3.35	.....
<b>Eastman Enameled Trays:</b>			
<i>(For negatives)</i>			
4½ x 6½ .....	4 x 6	.60	.....
5¼ x 7¾ .....	5 x 7	.80	.....
8¾ x 10½ .....	8 x 10	1.15	.....
12½ x 15½ .....	11 x 14	2.55	.....
15¼ x 18¼ .....	14 x 17	3.70	.....
17½ x 21½ .....	16 x 20	4.95	.....
19¾ x 23¾ .....	18 x 22	7.80	.....
Kodak Special Squeegee .....		1.33	.125
Bantam Kodachrome Adapter A .....		25.05	2.348
Bantam Kodachrome Adapter B .....		25.05	2.348
35mm. Kodachrome Adapter A .....		25.05	2.348
35mm. Kodachrome Adapter B .....		25.05	2.348
Kodak Photo Blotter Roll .....		1.50†	.....
<b>Kodak Lens Cleaner:</b>			
1-oz. bottle .....		.20†	.....
16-oz. bottle .....		1.20†	.....
<b>Kodak Lens Cleaning Paper:</b>			
1 doz. booklets .....		.60†	.....
Kodak Film Cleaner .....		.60†	.....
<b>Kodak Leather Dressing:</b>			
4-oz. bottle .....		.25†	.....
1-pt. bottle .....		.75†	.....
<b>Kodak Mask Charts (Per dozen):</b>			
5 x 7 .....		.15†	.....
8 x 10 .....		.25†	.....
11 x 14 .....		.45†	.....
<b>Kodak Ruby Printing Masks:</b>			
No. 0 .....		.15	.014
No. 1 .....		.15	.014
No. 2 .....		.15	.014
No. 3 .....		.15	.014
No. 4 .....		.15	.014
No. 6 .....		.15	.014
No. 7 .....		.15	.014
No. 8C .....		.15	.014
No. 8 .....		.15	.014
No. 9 .....		.15	.014
No. 12 .....		.15	.014
No. 15 .....		.15	.014
No. 16 .....		.15	.014

CINE-KODAKS —  
16-MM.

PROFESSIONAL  
Printers and Dryers

PROFESSIONAL  
Lenses and Filters

SOUND  
KODASCOPES

PROFESSIONAL  
SUNDRIES

KODAK  
Lens Attachments



	RETAIL PRICE
No. 17 .....	.15
No. 18 .....	.15
No. 19 .....	.15
Kodak Masking Paper (100 sheets):	
11 x 14 .....	1.50†
Eastman Printing Frames:	
2¼ x 3¼-inch plates and V.P.K. or smaller films .....	.60
3¼ x 4¼-inch plates, 2¼ x 3¼ or smaller films .....	.70
3¼ x 5½-inch films or plates .....	.70
4 x 5 -inch plates or sheet films .....	.70
5 x 7 -inch plates or sheet films .....	.85
Kodak Auto-Mask Printing Frame .....	1.60

<sup>o</sup>Includes Oct. 1941 U. S. Manufacturers' Excise Tax.

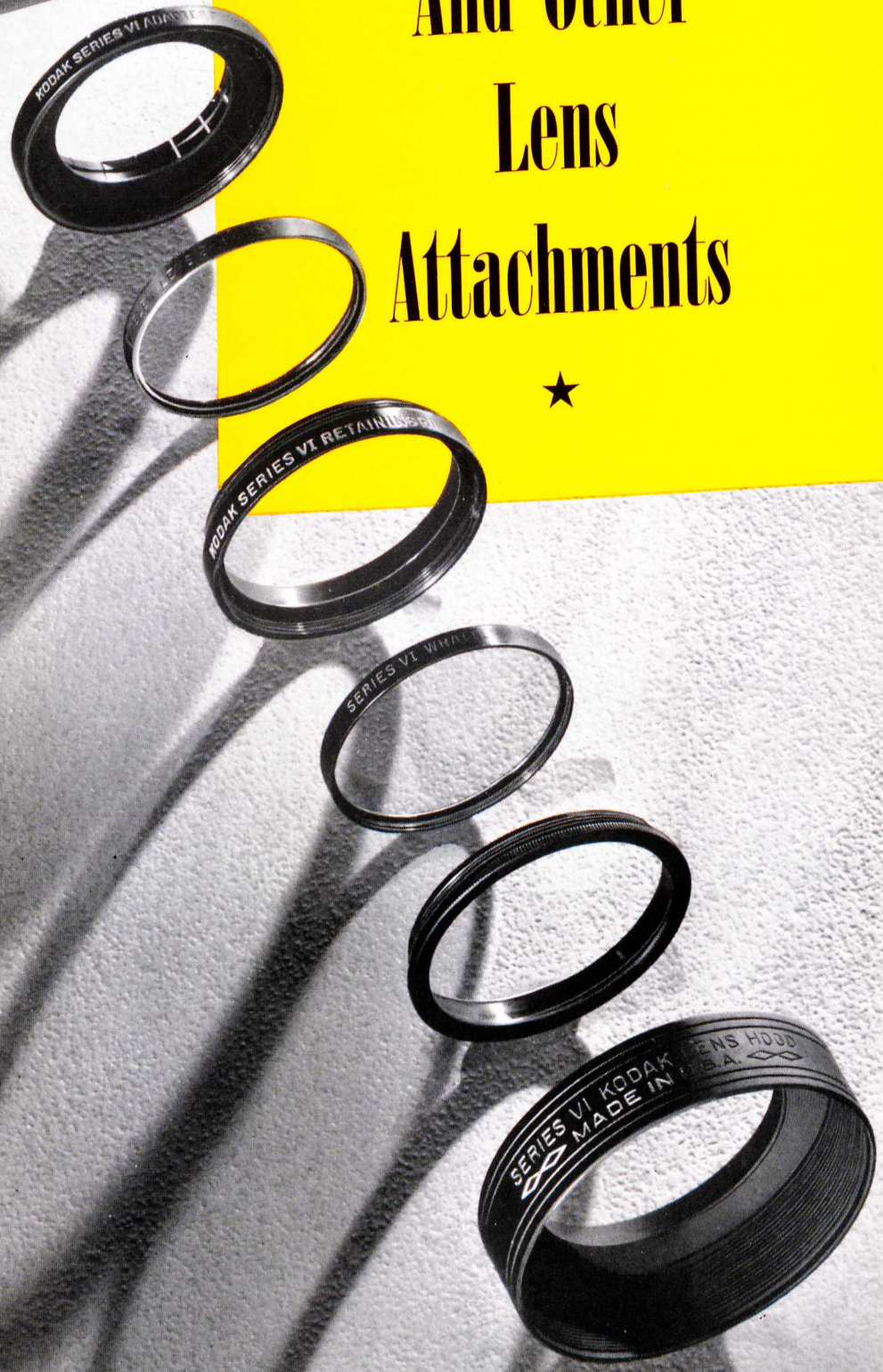
†Not subject to U. S. Manufacturers' Excise Tax.





# KODAK FILTERS

## And Other Lens Attachments



CINE-KODAKS —  
1.6-MM.

PROFESSIONAL  
Printers and Dryers

PROFESSIONAL  
Lenses and Filters

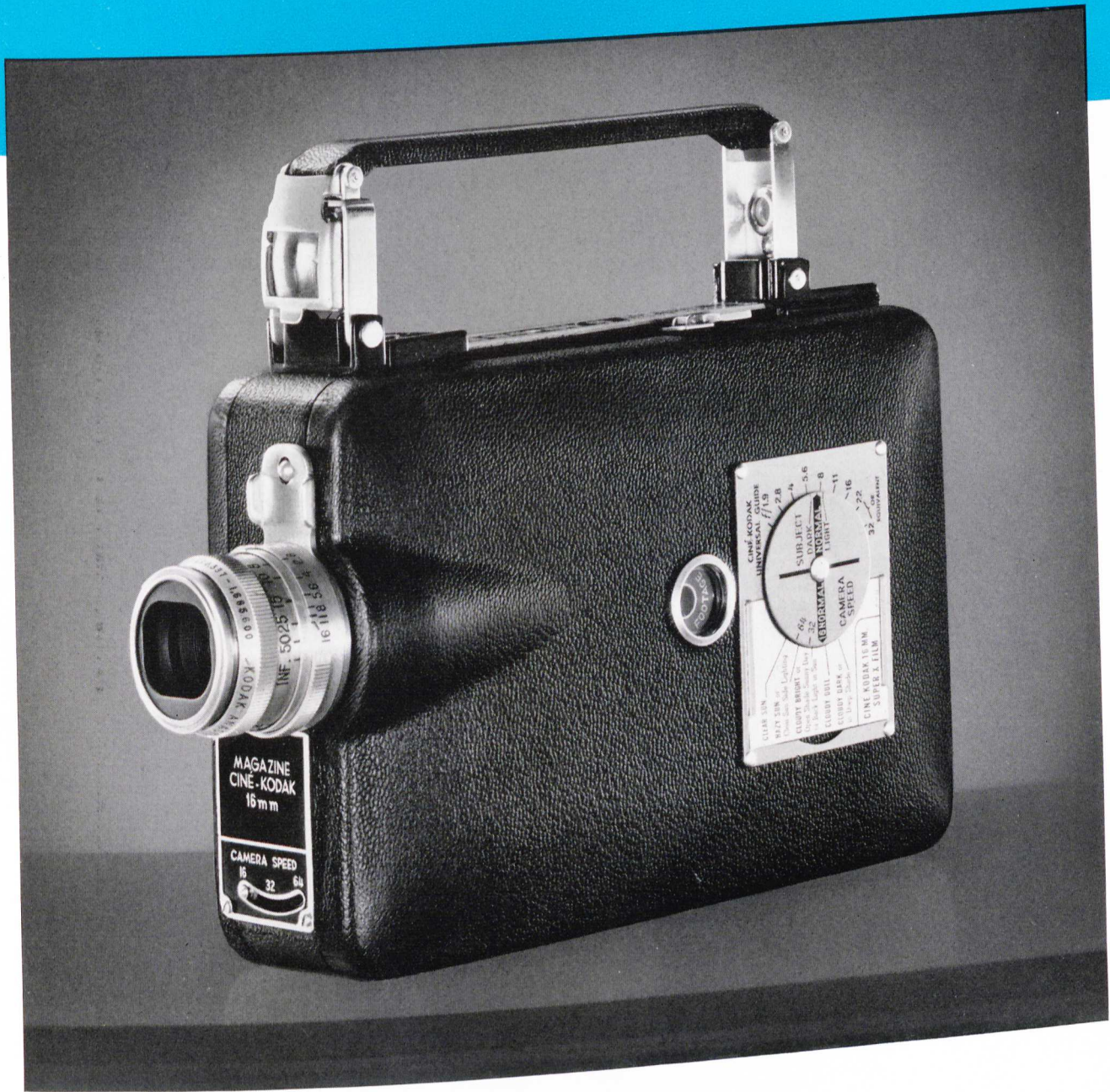
SOUND  
KODASCOPES

PROFESSIONAL  
SUNDRIES

CINE-KODAK  
ACCESSORIES



# MAGAZINE CINÉ-KODAK



**T**HIS is tops among cameras for the home movie enthusiast. It is a 16-mm. motion picture camera combining the utmost of convenience with great capability and versatility.

Because Ciné-Kodak Film for this camera is provided in magazines, loading becomes a simple, swift operation. It is only necessary to open the hinged side of the camera, insert a film magazine, and lock it in place. You may change from black-and-white to full-color Kodachrome Film in a matter of seconds, and without loss of film. Magazines contain 50 feet of Ciné-Kodak Film.

PROFESSIONAL  
CAMERAS

PROFESSIONAL  
Printers and Dryers

PROFESSIONAL  
Lenses and Filters

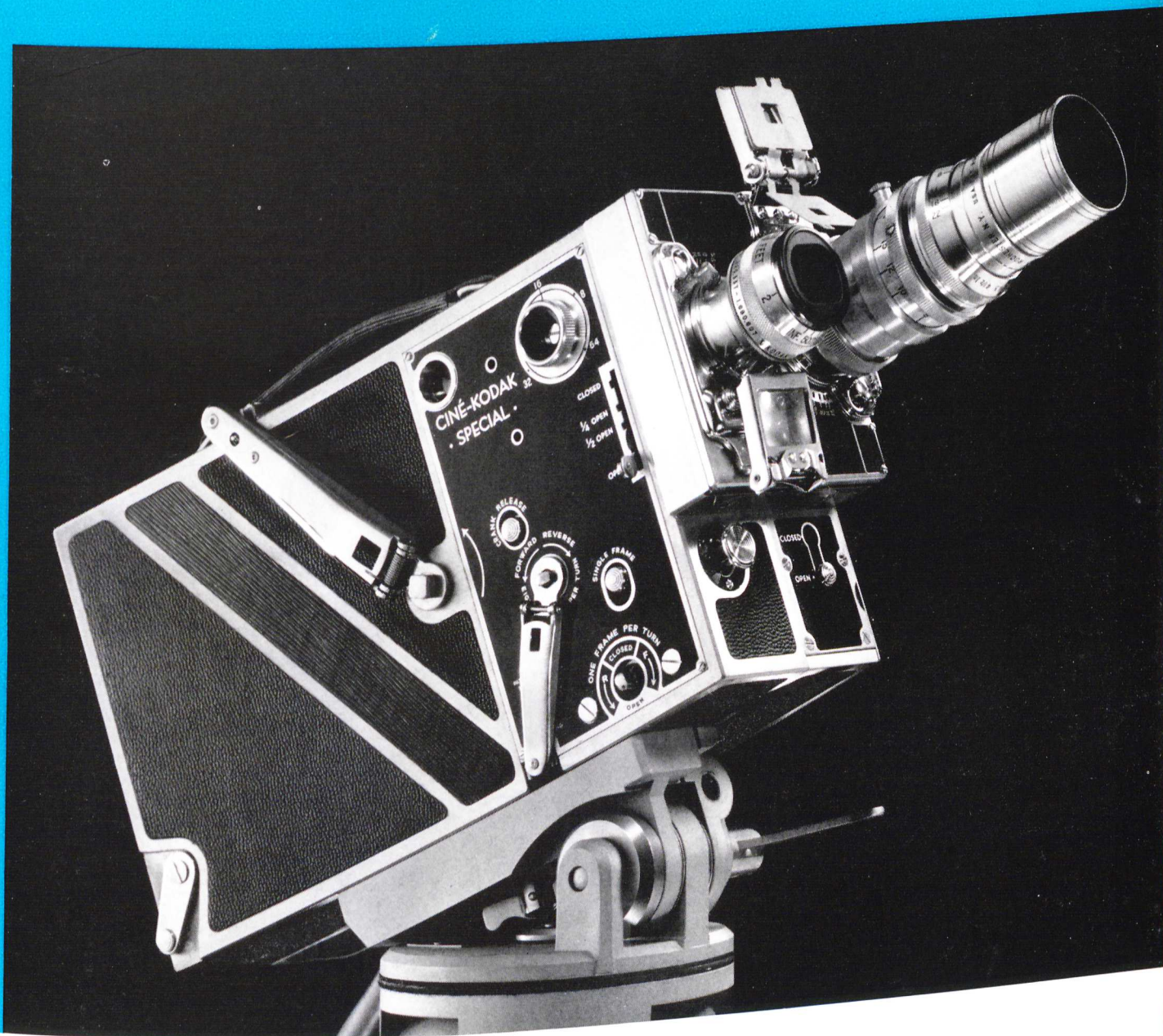
SOUND  
KODASCOPES

PROFESSIONAL  
SUNDRIES

CINÉ-KODAK  
ACCESSORIES



# CINÉ-KODAK SPECIAL★



A 16-mm. motion picture camera of the highest precision and capability. It is generally recognized as the finest camera of its type, a camera designed expressly to meet the requirements of those to whom 16-mm. motion pictures are—or can be—useful in connection with their business or profession.

Despite the fact that the Special is made for the serious worker, it retains much of the operating ease of standard amateur Ciné-Kodaks.

The Ciné-Kodak Special is so designed that its basic model can be adapted to meet specific, highly specialized requirements.

★ Note. All bright work is blacked out in the finish of Ciné-Kodak Specials produced during the war. With Victory, the Special will again appear as in the photographs reproduced here.

PROFESSIONAL  
CAMERAS

PROFESSIONAL  
Printers and Dryers

PROFESSIONAL  
Lenses and Filters

SOUND  
KODASCOPES

PROFESSIONAL  
SUNDRIES

CINÉ-KODAK  
ACCESSORIES



# ★ Section 8 CINÉ-KODAKS

## PRICE LIST

All prices subject to change without notice

	°RETAIL PRICE	ADD. TAX
<b>MAGAZINE CINÉ-KODAK f/1.9</b>	\$120.00	\$10.986
Without case . . . . .	50.65	4.748
15-mm. f/2.7 accessory lens . . . . .	85.35	8.001
50-mm. f/1.6 accessory lens . . . . .	57.05	5.348
63-mm. f/2.7 accessory lens . . . . .	41.05	3.848
76-mm. f/4.5 accessory lens . . . . .	73.05	6.848
102-mm. f/2.7 accessory lens . . . . .	83.75	7.851
152-mm. f/4.5 accessory lens . . . . .	6.95	.651
Adapter for accessory lenses . . . . .	29.35	2.751
Lens Extension Tube Outfit . . . . .	18.65	1.748
Focusing Finder . . . . .	15.00†	.....
Combination Case . . . . .	27.50†	.....
Compartment Case . . . . .		
<b>CINÉ-KODAK SPECIAL, 25-mm f/1.9</b>	428.00	.....
With 100-ft. film chamber, set of six masks, and oiling outfit . . . . .	24.20	2.532
Lens Extension Tube Outfit . . . . .	64.80	7.200
Reflex Finder Image Magnifier . . . . .	50.65	4.748
15-mm. f/2.7 wide-angle lens . . . . .	6.95	.651
Adapter for wide-angle lens . . . . .	85.35	8.001
50-mm. f/1.6 accessory lens . . . . .	57.05	5.348
63-mm. f/2.7 accessory lens . . . . .	41.05	3.848
76-mm. f/4.5 accessory lens . . . . .	73.05	6.848
102-mm. f/2.7 accessory lens . . . . .	83.75	7.851
152-mm. f/4.5 accessory lens . . . . .	6.95	.651
Adapter for long-focus lenses . . . . .	72.00	6.750
Optical View Finder . . . . .	117.45	11.139
Extra 100-ft. Film Chamber . . . . .	144.10	13.668
200-ft. Film Chamber . . . . .	42.50†	.....
Regular Carrying Case, 100-ft. size . . . . .	57.50†	.....
Regular Carrying Case, 200-ft. size . . . . .	55.00†	.....
Special Carrying Case, 100-ft. size . . . . .	67.50†	.....
Special Carrying Case, 200-ft. size . . . . .		

°Includes October 1941 U. S. Manufacturers' Excise Tax.

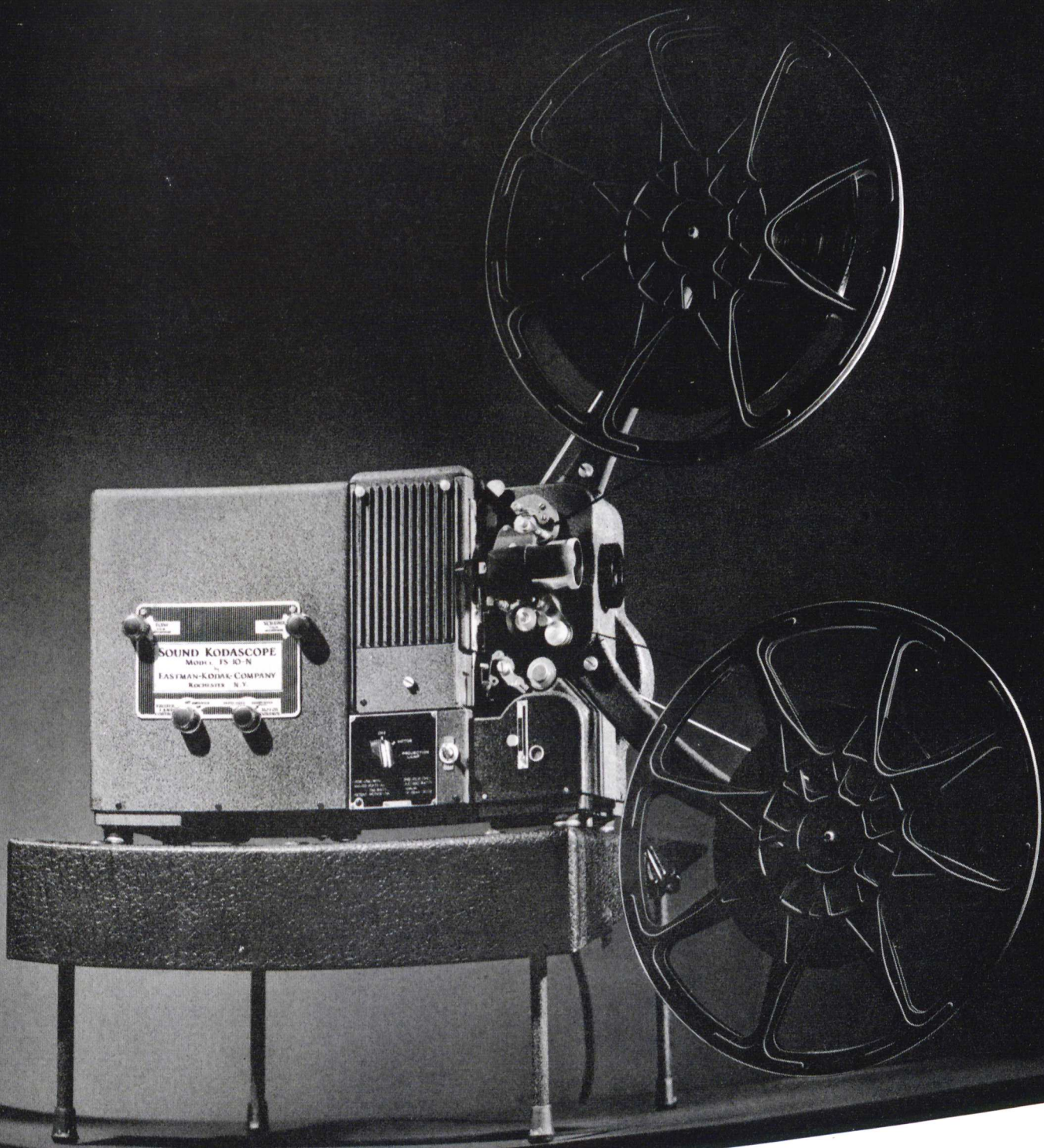
†Not subject to U. S. Manufacturers' Excise Tax.

EASTMAN KODAK COMPANY, ROCHESTER, N. Y.

PROFESSIONAL CAMERAS  
 PROFESSIONAL Printers and Dryers  
 PROFESSIONAL Lenses and Filters  
 SOUND KODASCOPES  
 PROFESSIONAL SUNDRIES  
 CINÉ-KODAK ACCESSORIES



# SOUND KODASCOPE *Model FS-10-N*



A projector of sound-on-film 16-mm. motion pictures. It is an excellent performer, yet so easy to use that an inexperienced operator can handle it with full effectiveness.



★ **Section 12 SOUND KODASCOPIES**

**PRICE LIST**

*All prices subject to change without notice*

	†RETAIL PRICE	ADD. TAX
<b>SOUND KODASCOPE FS-10-N</b>		
Cordomatic reel, 2-inch <i>f</i> /1.6 lens, 750-watt lamp, tubes, extra exciter lamp, and case . . . . .	\$323.50	. . . . .
<b>ACCESSORY LENSES</b>		
1-inch <i>f</i> /2.5 lens . . . . .	10.00	. . . . .
1½-inch <i>f</i> /2.5 lens . . . . .	10.00	. . . . .
3-inch <i>f</i> /2 lens . . . . .	20.00	. . . . .
4-inch <i>f</i> /2.5 lens . . . . .	22.50	. . . . .

†Not subject to U. S. Manufacturers' Excise Tax.

---

**EASTMAN KODAK COMPANY, ROCHESTER, N. Y.**

PROFESSIONAL CAMERAS  
 PROFESSIONAL Printers and Drivers  
 PROFESSIONAL Lenses and Filters  
 PROFESSIONAL Sundry Equipment  
 PROFESSIONAL SUNDRIES  
 CINE-KODAK ACCESSORIES



# CINÉ-KODAK FILTERS

**T**HE function of a photographic filter is to alter the character of light entering a camera lens in order to produce a specific result in the filmed image. Filters of several types are available to meet the requirements of movie making with standard and accessory lenses.

## Filters for Kodachrome

Because Kodachrome Film is made in two distinct types—one for daylight use and another (Type A) for artificial Photoflood light—it is necessary to use a filter to establish the correct color balance when the daylight film is used for work by artificial light, or vice versa. The two filters for this purpose are the Kodachrome Filter for Photoflood and the Type A Kodachrome Filter for Daylight.

The Kodachrome Haze Filter is useful in reducing excessive bluish haze in snow scenes or mountain and distant views. It also helps in dark-day or shaded work.

## Filters for black-and-white films

As all black-and-white Ciné-Kodak Films are panchromatic, the function of the filter is not so much to correct color rendition as to emphasize or suppress certain colors in order to gain desired effects.

**The CK-3 Filter** is a yellow filter which serves to darken sky tones, thereby increasing contrast between clouds and blue sky. Reds are brightened, but not enough to produce exaggerated effects.

**The A Filter** is a deep red filter, useful in producing very dramatic results—blue skies and green foliage are rendered dark; reds and yellows appear as lighter tones of gray. It is also used for spectacular architectural studies.

**The ND-2 Filter**, or neutral density filter, serves to cut down the intensity of light from all colors uniformly. Its primary purpose is to permit the use of very fast films, such as Kodak Super-XX Film, under very bright sunlight.



**The Kodak Pola-Screen** is not a filter in the usual sense, in that it is not at all color-selective. Its purpose is to subdue or eliminate oblique reflections, darken blue skies (in both black-and-white and Kodachrome filming), and help in achieving unusual architectural effects. It is best used in conjunction with a Pola-Screen Viewer by means of which the desired effect can be visually determined.

## Filter Mounts

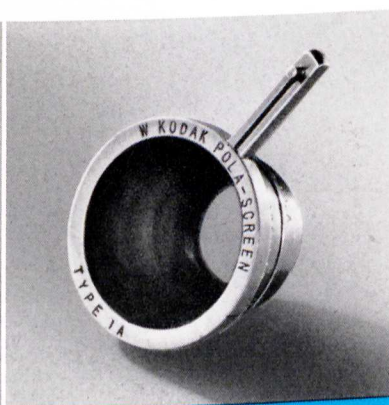
The foregoing filters, plus certain other highly specialized filters, are available in a variety of mounts, suitable for the several Ciné-Kodaks.

**The W Mount** is designed to fit inside the lens barrel of the 25-mm. (1-inch)  $f/1.9$  Ciné-Kodak lens (which is either standard with or available for most 16-mm. Ciné-Kodaks). Slip-on filter cells to fit the W Mount are also available.

**The Kodak Combination Lens Attachment** system has been devised to produce flexibility of filter use. It involves, first, an Adapter Ring which fits snugly over the camera lens. To that Adapter can be added any of the several color filters or a Kodak Pola-Screen, or a Lens Hood—or a combination thereof. For further description of Kodak Combination Lens Attachments see the section on still camera accessories.



The W Mount slips inside the integral hood of the standard 25-mm. lens



The Kodak Pola-Screen in W Mount can be rotated for desired effect.



Kodak Combination Lens Attachments facilitate use of filters with accessory lenses.



# ★ Section 14 CINE-KODAK ACCESSORIES

## PRICE LIST

All prices subject to change without notice

	°RETAIL PRICE	ADD. TAX
Ciné-Kodak Tripod . . . . .	\$ 34.65	\$ 3.248
Filters and Filter Mounts		
CK-3 (yellow) filter in W Mount . . . . .	2.65	.248
A (red) filter in W Mount . . . . .	2.65	.248
ND-2 (neutral) filter in W Mount . . . . .	2.65	.248
Kodak Pola-Screen in W Mount . . . . .	8.55	.801
(For filters used in conjunction with Kodak Combination Lens Attachments, see price listings at end of Section 7 Kodak Combination Lens Attachments, Filters, and Supplementary Lenses)		
°Includes Oct. 1941 U. S. Manufacturers' Excise Tax.		
<b>HOME MOVIE EDITING EQUIPMENT</b>		
Kodascope Universal Splicer . . . . .	12.50	. . . . .
Kodascope Rapid Rewind and Universal Splicer . . . . .	22.50	. . . . .
Kodascope Master Rewind . . . . .	30.00	. . . . .
Film Reels and Cans		
16-mm. 400-ft. Reel . . . . .	.60	. . . . .
16-mm. 400-ft. Film Can . . . . .	.60	. . . . .
16-mm. 1600-ft. Reel . . . . .	3.50	. . . . .
16-mm. 1600-ft. Film Can . . . . .	1.00	. . . . .
16-mm. 2000-ft. Reel . . . . .	4.25	. . . . .
16-mm. 2000-ft. Film Can . . . . .	3.00	. . . . .
8-mm. 200-ft. Reel . . . . .	.40	. . . . .
8-mm. 200-ft. Film Can . . . . .	.40	. . . . .
8-mm. 400-ft. Reel . . . . .	.60	. . . . .
8-mm. 400-ft. Film Can . . . . .	.60	. . . . .

†Not subject to U. S. Manufacturers' Excise Tax.

EASTMAN KODAK COMPANY, ROCHESTER, N. Y.

PROFESSIONAL CAMERAS  
PROFESSIONAL Printers and Dryers  
PROFESSIONAL Lenses and Filters  
PROFESSIONAL Sundry Equipment  
PROFESSIONAL SUNDRIES  
PROFESSIONAL Films, Plates, Papers



# EASTMAN VIEW CAMERA 2D, 8 x 10



★ THIS CAMERA should be a part of the equipment of every professional photographer. It is a versatile, durable instrument that may be used for exteriors or interiors, as well as for some work in the studio.

The Eastman View Camera 2D is listed without lens, shutter, or tripod because professional photographers, as a rule, either have such equipment or prefer to order it separately to fit their needs.

The No. 2D has ample rising and falling front, operated by a rack and pinion movement, and the back has both horizontal and vertical swings which are used for correcting distortion. The camera back is reversible. A double extension bed permits the use of the long bellows, 29½ inches on the 8 x 10 camera. Focusing adjustments are operated by rack and pinion from both front and back. The camera is sufficiently compact to use wide-angle lenses, in which case the back can be racked as close to the front as desired so the front of the camera bed will not be in the field of view. To balance the weight of the camera over the tripod, a sliding tripod block permits the entire camera and bed to slide backward or forward and lock in position. Centering the camera over the tripod materially reduces vibration when heavy lenses are used. This camera also has sliding cut-off boards which permit making two or four exposures on an 8 x 10 film or plate. The camera bellows is of red morocco leather

and is fitted with a spring support inside the bellows frame to prevent sagging. This folds automatically when the camera is closed. The bed extensions are held rigidly horizontal by a heavy screw. The front extension folds when the camera is closed. The back extension is removable. Lens boards are reversible and are of ample size—6 x 6 inches for the 8 x 10 camera.

The Eastman View Camera 2D is finished in flat, dark mahogany with dull metal trimmings. Bed extensions are of cherry. A strong fiber case is available to hold the camera, six holders, tripod, and focusing cloth. Dimensions of the Eastman View Camera 2D, 8 x 10, closed, are 14¾ x 13 x 5¾ inches; weight, 11¼ pounds; bellows draw, 29½ inches; lens board, 6 x 6 inches.

## Eastman View Camera Reducing Back 8 x 10—5 x 7

THIS Reducing Back permits the use of 5 x 7 films or plates with the 8 x 10 view camera. It takes the place of the regular 8 x 10 back, but has a 5 x 7 ground glass, and a frame which accommodates 5 x 7 film or plate holders. The price of the back includes one Eastman Film or Plate Holder.



# No. 8 EASTMAN PRINTER MODEL 2

THIS is a very efficient and inexpensive professional printer which accommodates 8 x 10-inch and smaller film or plate negatives. The hand-operated platen has a rubber-studded covering to insure contact. A positive acting switch turns on the lights when the platen makes contact, while the operating handle locks and maintains contact until the lock is released by finger pressure on a catch. The white lights, of which there should be four 25- or 40-watt Mazda lamps (not furnished), may also be operated manually. The ruby light, supplied, burns continuously. This printer has

four thin negative masking arms, three inches wide, which operate on a track that is flush with the printer top, permitting prints to be made with wide white margins. The masks are very easily adjusted and locked in position with a thumb screw. A door in the front of the printer gives access to the lamps and to a diffusing ground glass on which vignettes may be placed. Three grooves permit this glass to be used at varying distances from the negative to produce more or less diffusion. This printer is strong, durable, and its operation is smooth and positive.





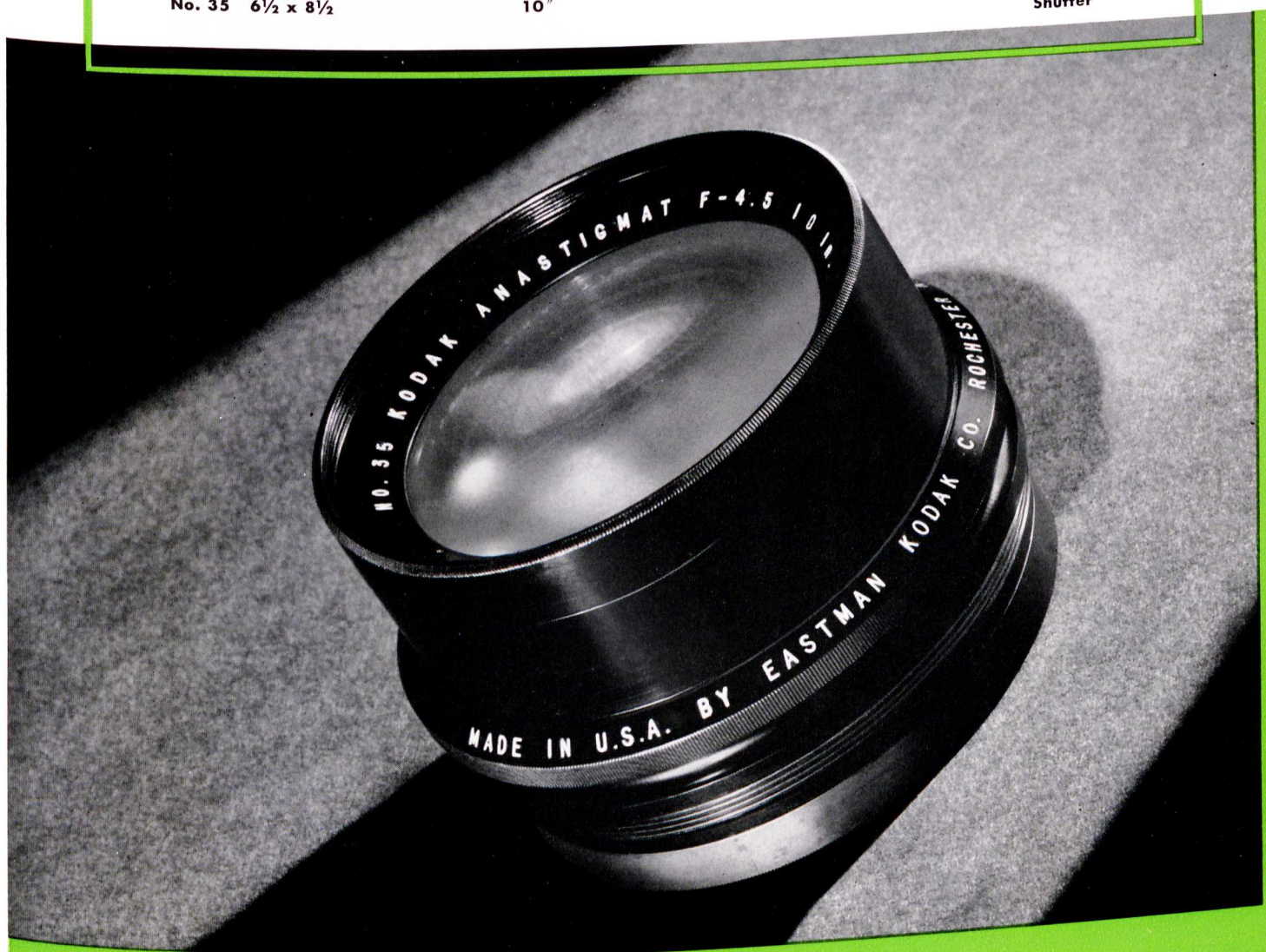
# KODAK ANASTIGMAT LENSES

★ **Kodak Anastigmat Lens f/4.5** This is a lens of exceptionally fine quality. It has excellent definition, flatness of field, and depth of focus. It is so carefully corrected that the point of accurate focus is easily determined. This is a distinct advantage where quick

and accurate focusing is required. This lens is recommended for any type of work which requires the fine definition of an anastigmat. It is especially suitable for home or studio portraiture, architectural, landscape, sports, and news photography.

## THE SIZES CURRENTLY AVAILABLE ARE:

Size of Film Covered	Equivalent Focus, in inches	In Barrel Iris Diaphragm	Lens Fitted in Shutter
No. 32 4 x 5	6 <sup>3</sup> / <sub>8</sub> "	In Barrel, Iris Diaphragm	Supermatic Shutter
No. 33 5 x 7	7 <sup>1</sup> / <sub>2</sub> "	In Barrel, Iris Diaphragm	
No. 35 6 <sup>1</sup> / <sub>2</sub> x 8 <sup>1</sup> / <sub>2</sub>	10"		



★ **Other Kodak Anastigmats** Kodak Anastigmats are normally manufactured in a variety of focal lengths and in relative apertures from *f*/3.5 to *f*/8.8. The larger their apertures the more desirable they are for use under unfavorable light conditions or at faster shutter speeds. Of this group of lenses, only the one listed below is now available:

**No. 70, Kodak Anastigmat *f*/7.7, Focal Length 8 inches, in Supermatic Shutter.**

★ **Kodak Ektar Lenses** These lenses are of particular interest to the photographer using Kodachrome Profes-

sional Film as they are highly color corrected. They are equally suitable for black-and-white photography, especially under adverse light conditions or when short exposures are necessary. In resolving power, definition, and color correction, they attain the high standard established for all Kodak Ektar Lenses.

Two of these fine lenses are now available for cameras such as the Speed Graphic:

**Kodak Ektar *f*/4.5, Focal Length 101 mm., in Supermatic Shutter for 2<sup>1</sup>/<sub>4</sub> x 3<sup>1</sup>/<sub>4</sub> cameras.**

**Kodak Ektar *f*/4.7, Focal Length 127 mm., in Supermatic Shutter for 3<sup>1</sup>/<sub>4</sub> x 4<sup>1</sup>/<sub>4</sub> cameras.**



# KODAK DRY MOUNTING PRESS MODEL E



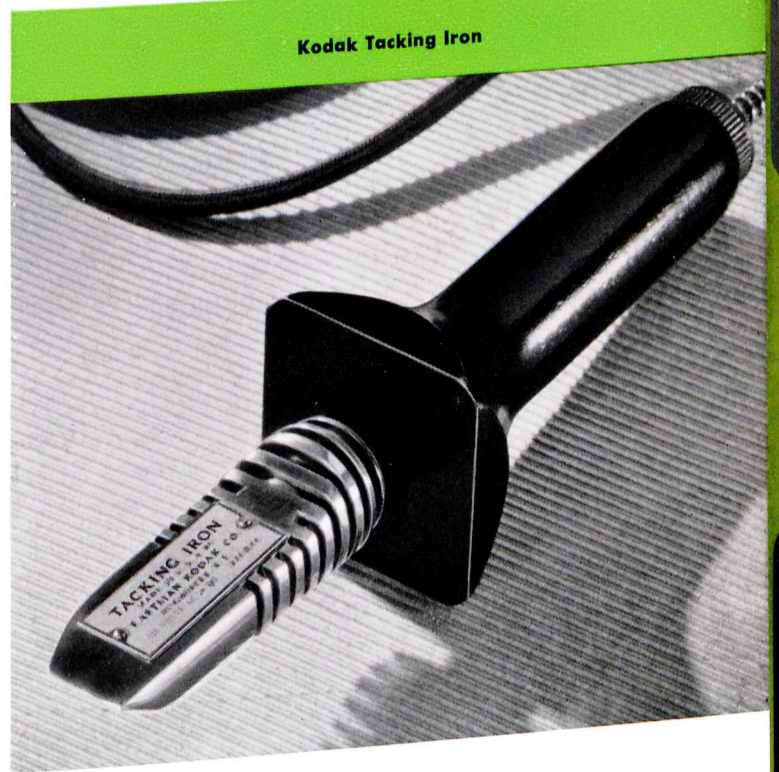
★ Dry mounting is the most satisfactory means of keeping prints flat in albums or on mounts. There is no moisture in the adhesive, so the gelatin of the print does not expand and contract and cause the mount to curl out of shape, as often happens when moist adhesives are used. Dry-mounted prints lie flat even on the thinnest of mounts.

The Kodak Dry Mounting Press is a piece of professional equipment that should be used by every photographer and photofinisher. It has an electrically heated 11 x 14-inch platen. By giving repeated impressions, it may be used for mounting prints up to twice the width of the press bed and of any length. Heat melts the Dry Mounting Tissue which is the adhesive, and holds the print firmly to the mount.

The price of the Press includes an electrically heated tacking iron, electric cord, plug, thermometer, and switch.

Extra tacking irons are sometimes needed when a number of prints are to be dry mounted. The iron is used to tack the mounting tissue to the

print, and to the mount, to hold the print in position until it can be mounted in the press.



Kodak Tacking Iron



# PROFESSIONAL SUNDRIES

★ **Crown Tripods** The Crown is a compact wooden tripod, made for cameras of the focusing type, or for any cameras with which time exposures are to be made.

The Crown Tripod has four wooden sections, made of selected cherry. The two lower sections telescope into the third, upon which the top section folds back. Binding screws which hold the sections at partial or full extension are nondetachable. Expansion brackets prevent side play and keep upper sections from being detached from the tripod head. The head has two tripod sockets, one set off center to counterbalance the weight when a camera extension is used.

	Length		Weight	Diameter of Top
	Closed	Extended		
No. 1	16¼ in.	4⅓ ft.	36 oz.	4 in.
No. 2	17¼ in.	4⅔ ft.	65 oz.	6 in.
No. 4	20 in.	5½ ft.	90 oz.	6½ in.

★ **Crown Tilting Tripod Top** This is a rectangular tripod top in two hinged sections, the upper of which may be tilted at any angle, including vertical, and held by side metal braces and binding nuts. By reversing the camera on the Tripod Top, it may be pointed up at any angle, including vertical. The No. 1 Tripod Top is 4¼ x 5¾ inches. The No. 2 is 6 x 7 inches.

★ **Eastman Tripod Brace** This brace consists of three brass arms, one of which is attached to each tripod leg, the three arms being joined in the center and held by a binding nut. This brace holds the three tripod legs rigidly and permits camera and tripod to be moved about with the legs in the desired fixed position. This brace will fit any average size wooden tripod.

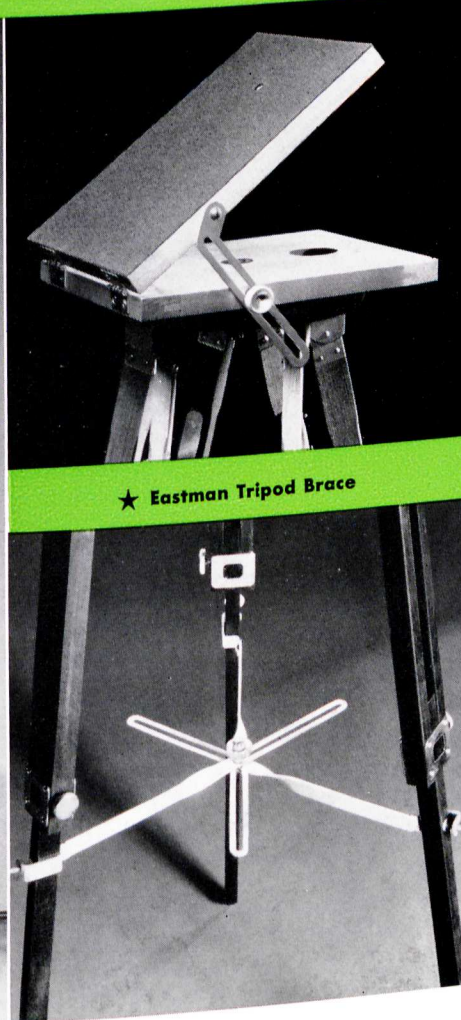
★ **Eastman Commercial Metal Tripod, Model B** This is a professional tripod that is strong, sturdy, and serviceable. Its excellence of construction will be especially appreciated by the commercial photographer who has a variety of outside and inside work.

The head of this tripod is an aluminum die casting to which the legs are firmly bolted and locked with a vise-handle clamp. The upper legs are ¾-inch angle-aluminum and are ⅛ inch thick. The second section slides in the angle of the first and is locked at any point, simultaneously at both sides by a handle clamp. This is one of the most convenient features ever incorporated in a tripod. The third section of this tripod is a tube of aluminum which may be quickly reversed and screwed in place to obtain extreme height. The metal spurs have detachable rubber tips for use on polished floors. The height of this tripod may be adjusted from 30 inches to 7 feet.

★ Nos. 4, 2, and 1 Crown Tripods

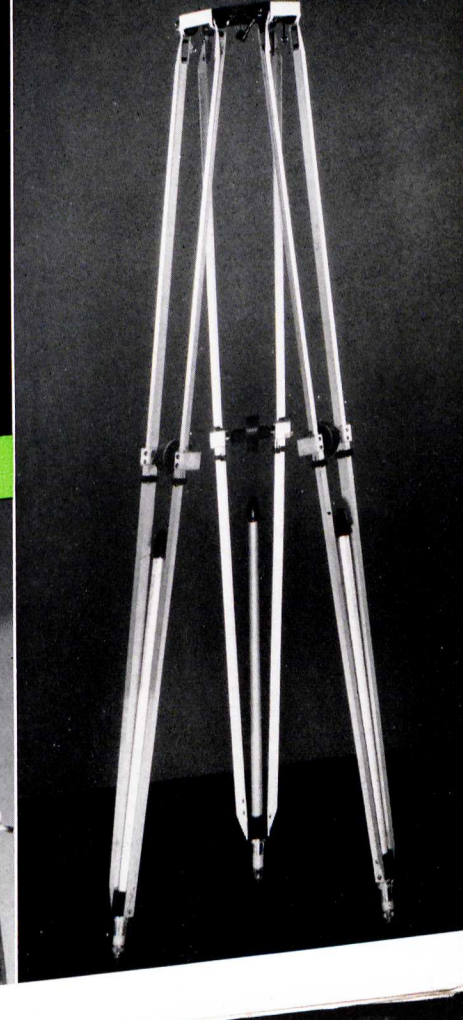


★ Crown Tilting Tripod Top



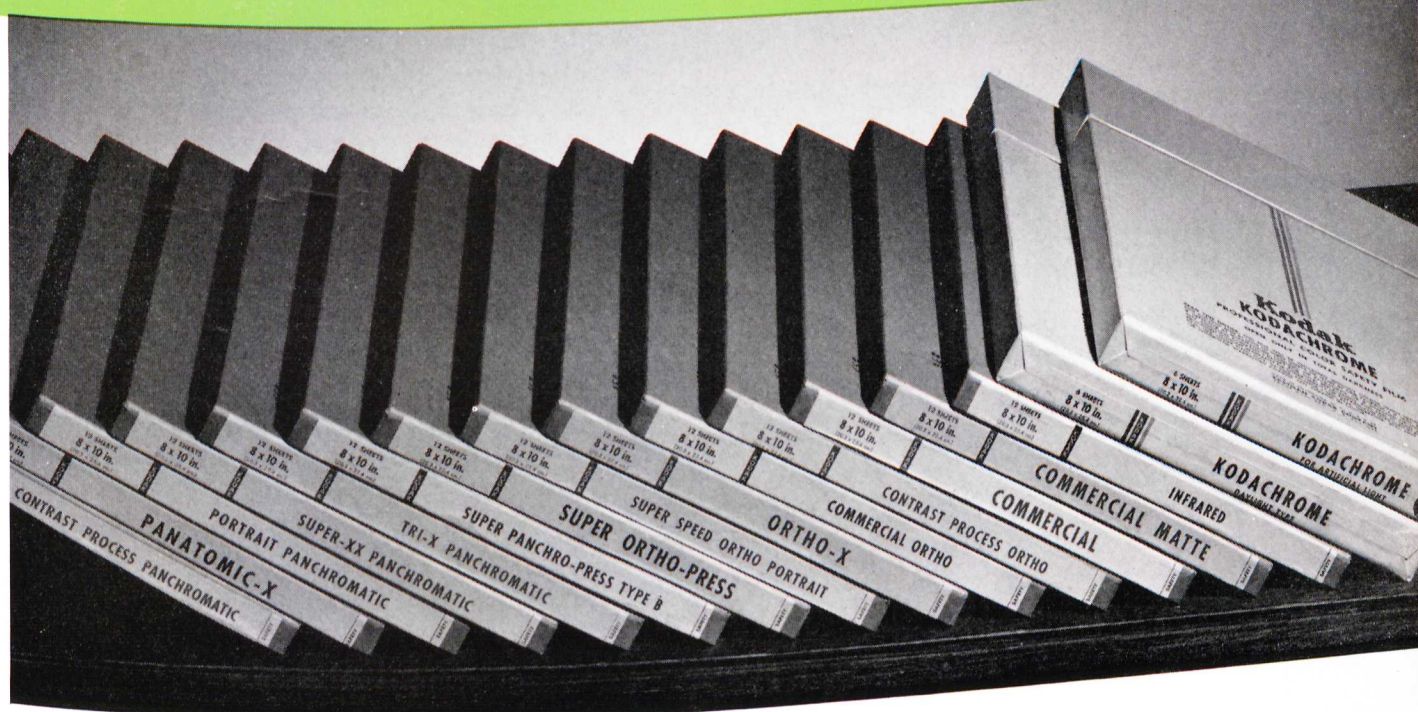
★ Eastman Tripod Brace

★ Eastman Commercial Metal Tripod, Model B





# KODAK PROFESSIONAL FILMS AND PLATES



OUTSTANDING in the history of the largest film and plate manufacturing plant in the world are the quality of materials used and the exactness of its manufacturing processes. Its entire personnel wages a constant fight against the slightest variation in temperature or humidity, or the faintest trace of impurity in chemicals or other materials which make up its sensitive products.

The Kodak Research Laboratories are the source of developments that keep photography moving forward, while the experience of the manufacturing divisions in making films and plates for over 50 years is unsurpassed. The meticulous care and laboratory control exercised in manufacture assure the photographer the maximum of uniformity and dependability in all Kodak sensitized products.

## KODAK FILMS

- Kodak Super-XX Panchromatic
- Kodak Portrait Panchromatic
- Kodak Super Panchro-Press, Type B
- Kodak Super Panchro-Press, Sports Type
- Kodak Tri-X Panchromatic
- Kodak Panatomic-X
- Kodak Ortho-X
- Kodak Super-Speed Ortho Portrait

- Kodak Super Ortho-Press
- Kodak Commercial
- Kodak Commercial Matte
- Kodak Commercial Ortho
- Kodak Contrast Process Ortho
- Kodak Contrast Process Panchromatic
- Kodak Infrared
- Kodachrome Professional Film

**Kodak Super-XX Panchromatic** is an exceptionally fast film of fine grain and wide exposure and development latitude. It is an excellent film for portraiture with artificial light, and is widely used in commercial work. Its fineness of grain permits of a considerable degree of enlargement.

**Kodak Portrait Panchromatic** is recognized as a standard film for portrait work. Even with the high red content of clear tungsten light, the color balance of Portrait Panchromatic Film gives correct rendering of delicate flesh tones so essential in good modeling.

**Kodak Super Panchro-Press, Type B**, is a film with greater speed than the Super-XX but with lower red

sensitivity. While this film was originally intended for press photography, its high speed, excellent color balance, and the brilliance of the negatives it produces, made it a favorite of both portrait and commercial photographers. It gives specially fine results with fluorescent light.

**Kodak Super Panchro-Press, Sports Type**, is a modification of Super Panchro-Press Film, Type B, and is twice as fast as Type B when developed as recommended. It has the ability to build speed with prolonged development with a minimum of veiling and without excessive contrast. This film is recommended for difficult sports shots or for other work where exposures must be made under difficult light conditions at fast shutter speeds, or



# ★ KODAK PLATES ★

Kodak 50  
 Kodak 40  
 Kodak 33 and 33 Matte  
 Kodak Polychrome  
 Kodak Commercial  
 Kodak Process

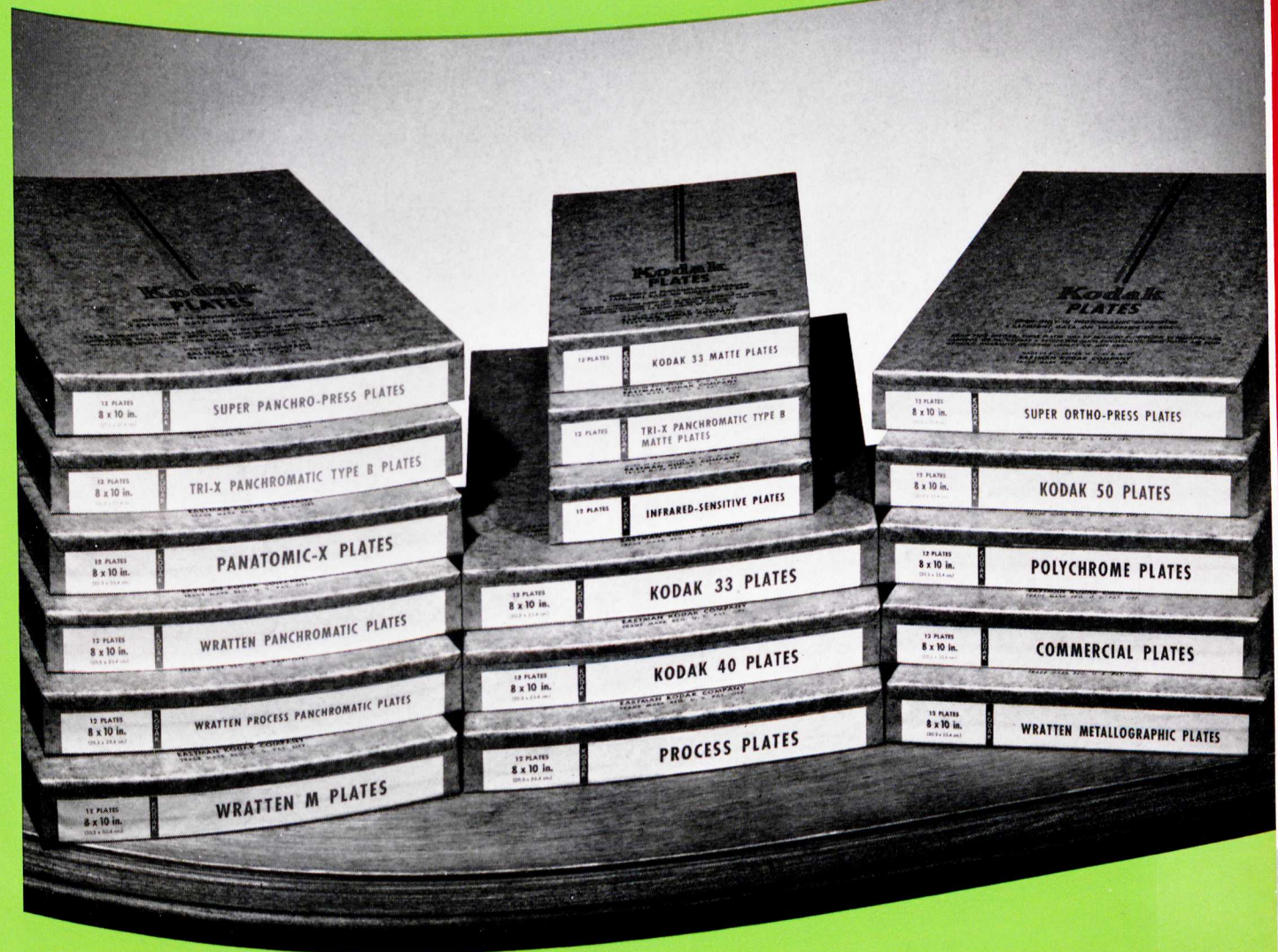
Kodak Super Ortho-Press  
 Kodak Super Panchro-Press  
 Kodak Tri-X Panchromatic Type B,  
 and Type B Matte  
 Kodak Infrared Sensitive  
 Kodak Panatomic-X

Kodak Lantern Slide

# ★ WRATTEN PLATES ★

Wratten Process Panchromatic  
 Wratten Panchromatic

Wratten "M"  
 Wratten Metallographic







## KODAK PAPERS For Professional Use

KODAK Papers have long been known the world over for their high quality and consistent uniformity. They are available in a variety of surfaces and emulsions which enable the photog-

rapher to select the paper which is most suitable for each subject. The wide range of contrast grades assures him of the best possible contact print or enlargement from any negative.

### Description of Kodak Papers

★ **Azo** and **Professional Azo** are contact printing papers which are widely used. Azo surfaces, E, F, and CF, are intended for commercial and photofinishing work. These grades are furnished in six degrees of contrast to

suit a great range of negative contrasts, and have a slightly warm black tone. Professional Azo, in surfaces B, J, G, C, and Y, is somewhat faster and has a warmer olive tone that is more suitable for portraiture. Pro-



# KODAK PROFESSIONAL PAPERS

★ NOW AVAILABLE ★

**B**ECAUSE of the enormously increased requirements of the Armed Forces, and of war industries which are given high priorities on essential materials, it has become necessary, for the present, to ration Kodak Papers for civilian use.

Furthermore, to simplify manufacture and increase production so that there will be as much Kodak Paper as possible for civilian needs, it has been necessary to suspend, temporarily, the production of some of the brands and some of the least used sizes of papers included in the Professional Papers section of the counter catalog of Kodak products. Your dealer will still have an ample range of sizes of the available papers to fit your needs.

## THE FOLLOWING KODAK PAPERS ARE STILL AVAILABLE:

**Ad-Type Grade A**

**Azo E and F**

**Professional Azo G and Y**

**Imbibition Paper**

**Kodabromide A, E, F, G, and N**

**Portrait Proof Grade R**

**Recording Papers**

**Reflex Copy**

**Studio Proof (printing-out)**

**Velox F Single Weight**

**Velox Rapid**

**Vitava Opal Double Weight G**

Kodabromide will now be supplied in five degrees of contrast, 1, 2, 3, 4, and 5, to cover a wider range than heretofore.

**EASTMAN KODAK COMPANY**



# KODAK PAPERS

for CONTACT PRINTING

- VELOX
- AD-TYPE GRADE A
- AZO
- PROFESSIONAL AZO

for ENLARGING

- ILLUSTRATORS' SPECIAL GRADE E
- KODABROMIDE
- KODALURE
- ROYAL BROMIDE
- VITAVA OPAL
- VITAVA PROJECTION







# KODAK PAPERS for CONTACT PRINTS



PUBLICATIONS

## ★ VELOX

...the ideal contact printing paper for album prints. Its wide latitude permits considerable deviation from ideal exposure without loss of quality. Velox is furnished in six grades of contrast, in each of which its blue-black tone remains uniform—single weight only—white, smooth, glossy surface.

## ★ AD-TYPE, GRADE A

...a light-weight contact printing paper designed to fold without cracking. It is an excellent medium for photographic greeting cards and is also useful for prints which require folding for mailing or filing. It is coated on smooth, lustre, light-weight white stock in six contrast grades. Its cold black tone is uniform throughout all degrees of contrast.

## ★ AZO

...a contact printing paper of unusual beauty and flexibility. If, in printing, the exposure has been inadequate, its latitude makes a degree of correc-

tion possible by forced development. Slightly warmer in tone than Velox, all Azo grades are available in six degrees of contrast. Grade F, smooth, glossy, white, is furnished in single and double weights. Grade CF, similar to F in all respects other than its blue-black tone, is supplied only in the single weight. Grade E, fine grained, lustre, white, offers a choice of either single or double weight.

## ★ PROFESSIONAL AZO

...differs from Azo primarily in its warmer, olive-brown image tone. The beauty of this tone particularly adapts it for effective use in contact printing of portraits and salon-type pictures. The variety of its surfaces commends its use for a wide range of work. Grades B, smooth, lustre; C, fine grained, lustre; C, smooth, matte; and Y, silk, lustre are all provided in double-weight cream, in three degrees of contrast. Grade J, smooth, lustre, double-weight ivory, is available in two degrees of contrast.



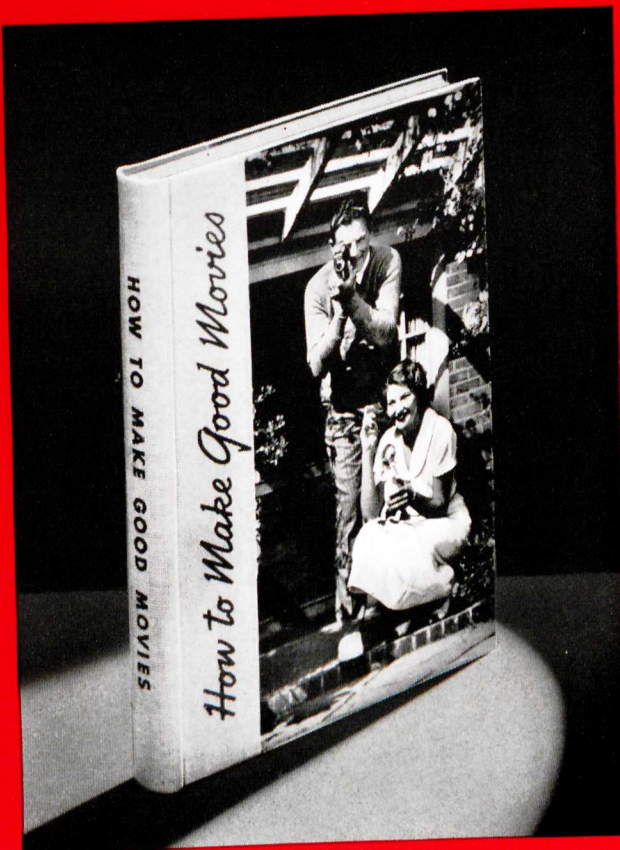
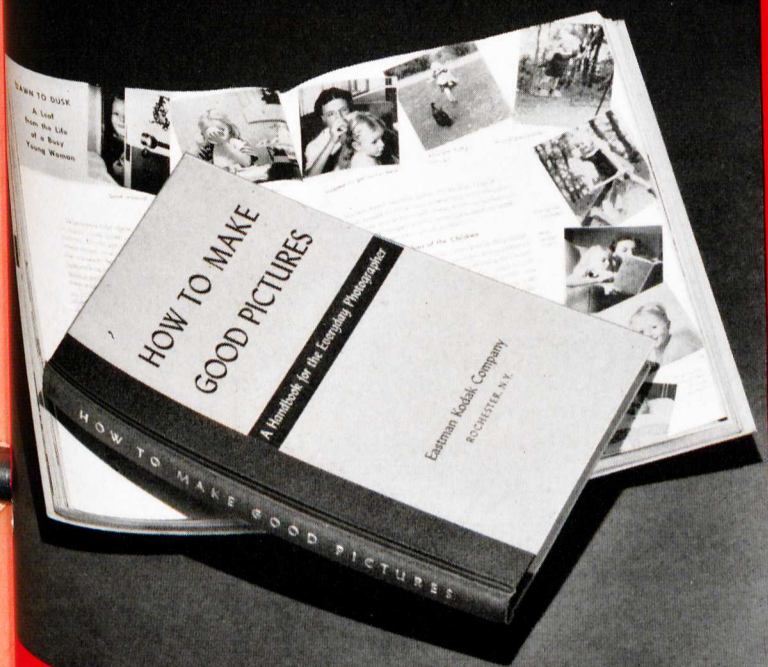
# KODAK PUBLICATIONS

## HOW TO MAKE GOOD PICTURES

THE amateur photographer finds here a complete handbook. Now in its 28th edition, it offers picture-making fundamentals in their simplest form. "How to Make Good Pictures" treats only of "still" photography, but the basic principles described here apply to any type of photography. Profusely illustrated with both black-and-white and full-color plates, its 240 pages describe photography in readily understandable terms. The wide variety of subjects helpfully discussed includes cameras, films, composition, lenses, picture taking indoors and out, color photography, developing and printing. Diagrams and charts are generously used. Interesting and easy to read, "How to Make Good Pictures" is thoroughly up to date.

## HOW TO MAKE GOOD MOVIES

STRICTLY non-technical, the purpose of this entertaining book is to point the way to more real pleasure in taking and showing amateur movies. It picks up the story where the instruction manuals leave off and stops far short of purely technical complexities. In lively, humorous style, through more than 200 profusely illustrated pages, it presents amateur movie making as good fun. The contents, unless otherwise specified, apply equally to 8-mm. or 16-mm. cameras. Some description of the mechanics of cameras and projectors is included, but all superfluous technicalities are omitted. Those who own a movie camera, as well as those who plan to purchase one, will find "How to Make Good Movies" informative and stimulating reading.





★ **Section 24 PUBLICATIONS**

**PRICE LIST**

*All prices subject to change without notice*

★

	RETAIL PRICE
How To Make Good Pictures .....	\$ .50
How To Make Good Movies .....	2.00
Kodak Reference Handbook .....	2.75
<b>KODAK DATA BOOKS</b>	
Kodak Films .....	.25
Photography with Kodachrome and Kodacolor Film .....	.25
Photography with Kodachrome Professional Film .....	.35
Kodak Papers .....	.25
Kodak Lenses, Range Finders, and Shutters .....	.35
Filters and Pola-Screens .....	.25
Infrared and Ultraviolet Photography .....	.25
Copying .....	.25
Slides .....	.25
Formulas and Processing .....	.25
Photography .....	3.00
The Theory of the Photographic Process .....	14.00
Elementary Photographic Chemistry .....	1.00
Elementary Photography .....	1.00
Photomicrography .....	2.00
Wratten Light Filters .....	.50
Eastman Motion Picture Films for Professional Use .....	2.00
Developing, Printing, and Enlarging .....	.10
Picture Taking Outdoors with Kodak Film .....	.10
Picture Taking with Kodacolor Film .....	.10
Kodak Information Book .....	.25
<b>KODAGUIDES</b>	
Kodak Outdoor Guide for Black-and-White Film .....	.10
Kodak Indoor Guide for Black-and-White Film .....	.10
Kodachrome Outdoor Guide, 35-mm. and Bantam .....	.10
Kodachrome Indoor Guide, 35-mm. and Bantam .....	.10
Kodacolor Exposure Guide .....	.10
Ciné-Kodak Outdoor Guide .....	.10
Ciné-Kodak Indoor Guide .....	.10
Kodak Home Lighting Guide .....	.10
Kodak Lens Guide .....	.10
Contrast Viewing Kodaguide .....	.25
Wratten Filter Guide .....	.10
Kodak Outdoor Filter Guide .....	.10
Kodak Film Guide .....	.10
Eastman Paper Kodaguide .....	1.00
Kodak Densiguide .....	1.75
Print Quality Kodaguide for Kodabromide .....	1.75