

**THE CETACEAN
COLLECTION**
of the
**MUSEUM OF
VICTORIA**



*An Annotated
Catalogue*

MY Collection

599.5

0621

Joan M. Dixon and Lina Frigo

Museum of Victoria 1994

A natural history museum for the people of Victoria was founded in March 1854. Inspired by Captain Andrew Clarke, Surveyor-General of the State, it was named the National Museum and located in the government assay office, La Trobe Street, Melbourne. The small collection of specimens was transferred to the newly established University of Melbourne, Parkville in July 1856. Professor Frederick McCoy, first professor of Natural Science in the University, was appointed Director of the National Museum in 1858. He held this position until his death in 1899 when the large and diverse collections were transferred to the Public Library buildings in Russell Street, Melbourne, their current location. In 1983, the National Museum merged with the Science Museum to become the Museum of Victoria. In 1994, the total collection exceeds 15 million natural science, anthropological and technological items.

The authors

Joan Maureen Dixon, Curator of Mammals, has been a member of the scientific staff of the Museum of Victoria since 1965. Lina Frigo was appointed Technical Officer in the Mammalogy Section of the Museum in 1991.

THE CETACEAN COLLECTION

of the

MUSEUM OF VICTORIA

An Annotated Catalogue

Joan M. Dixon and Lina Frigo

**Museum of Victoria
Melbourne Australia
1994**



**AUSTRALIAN DEER RESEARCH FOUNDATION LTD
PO Box 454 Croydon Vic 3136 Australia**

A natural history museum for the people of Victoria was founded in March 1854. Inspired by Captain Andrew Clarke, Surveyor-General of the State, it was named the National Museum and located in the Surveyor-General's office, La Trobe Street, Melbourne. The building was transferred to the newly established University of Melbourne Parkville in July 1856. Professor Frederick McCoy, first professor of Natural Science in the University, was appointed Director of the Museum in 1857. He held this position until his death in 1899 when the large and diverse collection was transferred to the Public Library buildings in Russell Street, Melbourne, their current location. In 1983, the National Museum merged with the Science Museum to become the Museum of Victoria. In 1994, the total collection exceeds 15 million natural science, anthropological and technological items.

Published by
Australian Deer Research Foundation Ltd
PO Box 454 Croydon Vic 3136 Australia

Copyright © Museum of Victoria 1994

National Library of Australia
ISBN 0 646 21632 5

All rights reserved. No part of this publication may be reproduced, stored in a retrieval system or transmitted in any form or by any means electronic, mechanical, photocopying, recording or otherwise without the prior written permission of the publishers.

Printed by Donprint Pty Ltd
Design and artwork by Anne Walters

CONTENTS

ACKNOWLEDGEMENTS	v
INTRODUCTION.....	1
LIST OF SPECIES	3
SPECIES SUMMARY	5
COLLECTION DETAILS	7
REFERENCES CITED	37

CONTENTS

ACKNOWLEDGEMENTS	7
INTRODUCTION	1
LIST OF SPECIES	3
SPECIES SUMMARY	3
COLLECTION DETAILS	7
REFERENCES CITED	7

Published by
Australian Deer Research Foundation Ltd
PO Box 434 Croydon Vic 3136 Australia

Copyright © Museum of Victoria 1994

National Library of Australia
ISBN 0 646 21632 5

All rights reserved. No part of this publication may be reproduced, stored in a retrieval system or transmitted in any form or by any means electronic, mechanical, photocopying, recording or otherwise without the prior written permission of the publisher.

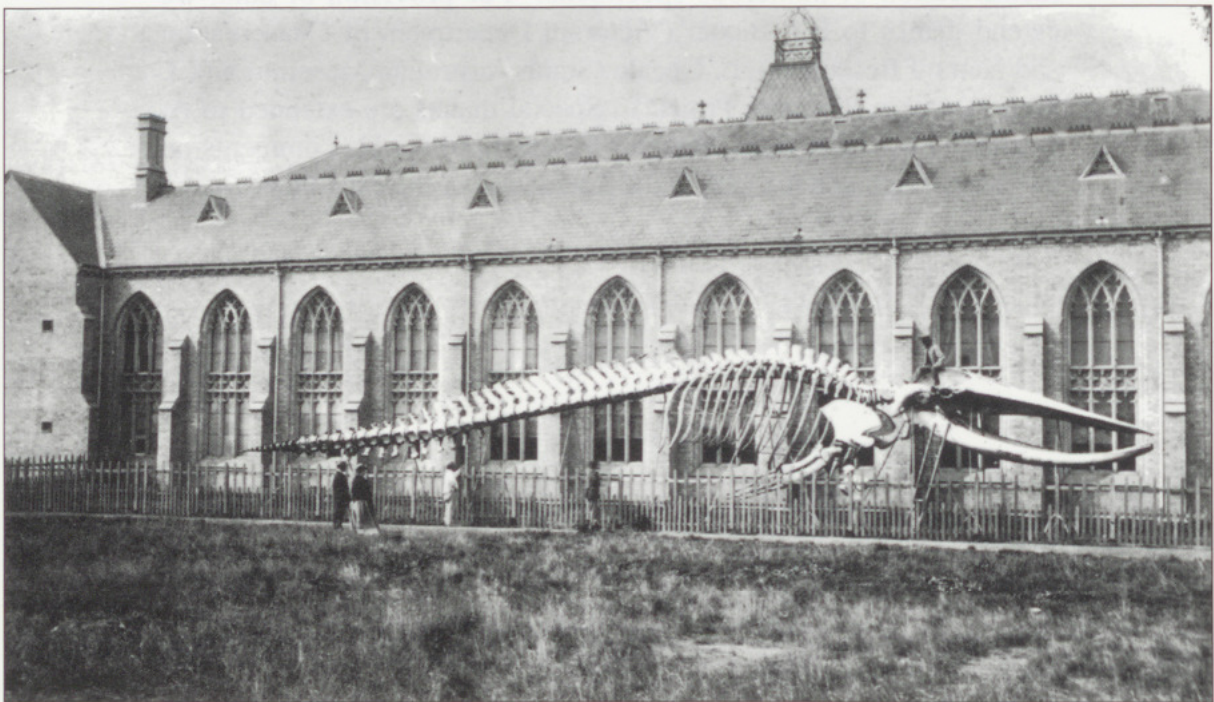
Printed by Deepprint Pty Ltd
Design and layout by Anna Wilson

ACKNOWLEDGEMENTS

The authors extend their appreciation to all those who through the collection and donation of material and provision of data, have assisted in the preparation of this work. Special thanks are extended to R.M. Warneke (formerly of the Victorian Department of Conservation and Natural Resources) for his interest in cetacean material and its preservation. R.J. Norman (The University of Melbourne) has provided considerable information on the parasitology and pathology of stranded specimens. G.J.B. Ross (Australian Nature Conservation Agency) has assisted in identification of numerous specimens. For provision of data, we extend thanks to B.J. Baxter (Victorian Department of Conservation and Natural Resources), L. Queale (South Australian Museum) and J. Weir (Dolphin Research Project). Special thanks are extended to A. Bentley (Australian Deer Research Foundation) for his comments on the manuscript, and his help in the production of the catalogue.

ACKNOWLEDGEMENTS

The authors extend their appreciation to all those who through collection and donation of material and provision of data, have assisted in the preparation of this work. Special thanks are extended to R.M. Whitley (formerly of the Victorian Department of Conservation and Natural Resources) for his interest in conservation material and its preservation. R.J. Norman (The University of Melbourne) has provided considerable information on the pathology and pathology of stranded specimens. C.L.B. Rose (Australian Nature Conservation Agency) has assisted in the preparation of numerous specimens and provision of data on



Blue Whale (*Balænoptera musculus*) skeleton (Reg. no. C23597) displayed outside the National Museum at the University of Melbourne in the late 1860s.

INTRODUCTION

The cetacean collection of the Museum of Victoria has its origins with the first Director of the Museum, Sir Frederick McCoy, who was also the first Professor of Natural Science in the University of Melbourne. Determined to acquire a diversity of animal species for display, he purchased many items from overseas at costs high even by modern standards. In 1859, McCoy acquired his first cetacean specimen, the skull of a Striped Dolphin (*Stenella coeruleoalba*) from Europe. Until his death in 1899, he obtained several significant marine mammal skeletons for exhibition through purchase or donation. These included a Beluga (*Delphinapterus leucas*) from Henry A. Ward, New York, and a Ganges River Dolphin (*Platanista gangetica*) from Edward Gerrard Junior, London. One of his early purchases, an articulated Minke Whale (*Balaenoptera acutorostrata*) from Norway, is currently displayed in the Museum.

While most of McCoy's acquisitions are from overseas, there are notable Victorian specimens. In August 1866, a large baleen whale stranded near Jan Juc, south-west of Melbourne. McCoy described it as a new species, which he named the Black Right Whale (*Physalus grayi*). The articulated skeleton was exhibited in the Museum grounds at the University, where it was a great attraction. At the time it was the largest articulated whale in any museum (Pescott 1954). After decades of exposure, its condition deteriorated and when the Museum collections were transferred from the University of Melbourne to the State Library site at the turn of the century, apparently it was destroyed. Now the only tangible reminders of this specimen, subsequently reidentified as a Blue Whale (*Balaenoptera musculus*), are a few baleen plates, a single tympanic bulla, and archival material.

Few cetacean species were acquired in the first half of the 20th century, and little research work was done on the group. The whaling industry prospered, but research on basic anatomy and general biology was minimal. From the 1950s, research interest in the group increased through the involvement of Museum staff as well as the then Melbourne based Antarctic Division, and the Fisheries and Wildlife Department, Melbourne. The prime mover in the latter was Robert M. Warneke, through whose efforts much useful material has been collected and preserved. Publications on Victorian cetaceans increased in this period, and from the 1960s the Museum increased its interest in dead whale salvage. Piloted by Joan M. Dixon, it led to an awareness of the existence of several little known species in Victorian waters, but much is still unknown.

There are 238 cetacean specimens in the collection of the Museum of Victoria, representing 32 species. This catalogue has been prepared to give a broad overview of the collection, from 1859 to 1994, to provide readily accessible information, and to encourage much-needed research in the many gaps in knowledge of southern hemisphere cetaceans.

INTRODUCTION

The taxonomic order of species in the catalogue follows that of Corbet and Hill (1991), and scientific and vernacular nomenclature is based on that used by the World Conservation Union (Klinowska 1991). Each Museum specimen is considered individually, and the following categories are addressed:

- Museum registration number - a single number prefixed by 'C' is allocated to each specimen record
- age and sex - form of material present in the collection
- locality and co-ordinates
- stranding details
- collector, presenter, dates of collection, presentation and registration where available
- measurements (in metres) and weight (in kilograms or tonnes)
- original numbers (field numbers allocated by collectors, registration numbers of other institutions, Museum preparation numbers or early registration numbers)
- references to scientific publications.

In many instances, material has been obtained from government organisations that have subsequently undergone major restructure and renaming. Name changes over many years are confusing and, for clarity, we have used a standard abbreviation throughout. Abbreviations of institutions or groups mentioned in the catalogue are given below.

AM	Australian Museum, Sydney
ADM	Antarctic Division, Melbourne (now based in Hobart)
ANARE	Australian National Antarctic Research Expeditions
FNCV	The Field Naturalists Club of Victoria
FWD	Fisheries and Wildlife Department (now known as Fisheries Flora and Fauna Division, Department of Conservation and Natural Resources), Melbourne
ITM	Industrial and Technological Museum (forerunner of the Science Museum), Melbourne
NMV	Museum of Victoria (formerly National Museum of Victoria), Melbourne
NPS	National Parks Service, Melbourne
QM	Queensland Museum, Brisbane
QVM	Queen Victoria Museum and Art Gallery, Launceston
VIMS	Victorian Institute of Marine Sciences, Melbourne
ZMA	Zoological Museum, Amsterdam, Netherlands

LIST OF SPECIES

SUBORDER ODONTOCETI (Toothed Whales)

	Page
1. Family Platanistidae	
1.1 <i>Platanista gangetica</i> (Ganges River Dolphin).....	7
2. Family Delphinidae	
2.1 <i>Stenella attenuata</i> (Pantropical Spotted Dolphin)	7
2.2 <i>Stenella coeruleoalba</i> (Striped Dolphin)	7
2.3 <i>Stenella longirostris</i> (Spinner Dolphin).....	7
2.4 <i>Delphinus delphis</i> (Common Dolphin).....	7
2.5 <i>Tursiops truncatus</i> (Bottlenose Dolphin).....	12
2.6 <i>Lagenodelphis hosei</i> (Fraser's Dolphin).....	17
2.7 <i>Pseudorca crassidens</i> (False Killer Whale).....	18
2.8 <i>Orcinus orca</i> (Killer Whale)	19
2.9 <i>Grampus griseus</i> (Risso's Dolphin).....	19
2.10 <i>Globicephala melas</i> (Long-finned Pilot Whale).....	20
3. Family Phocoenidae	
3.1 <i>Australophocaena dioptrica</i> (Spectacled Porpoise)	22
3.2 <i>Phocoena phocoena</i> (Harbour Porpoise)	22
4. Family Monodontidae	
4.1 <i>Delphinapterus leucas</i> (Beluga or White Whale).....	22
4.2 <i>Monodon monoceros</i> (Narwhal)	22
5. Family Kogiidae	
5.1 <i>Kogia breviceps</i> (Pygmy Sperm Whale).....	23
6. Family Physeteridae	
6.1 <i>Physeter macrocephalus</i> (Sperm Whale).....	24
7. Family Ziphiidae	
7.1 <i>Mesoplodon bowdoini</i> (Andrews' Beaked Whale).....	27
7.2 <i>Mesoplodon densirostris</i> (Blainville's Beaked Whale)	27
7.3 <i>Mesoplodon ginkgodens</i> (Ginkgo-toothed Beaked Whale)	27
7.4 <i>Mesoplodon grayi</i> (Gray's Beaked Whale)	27
7.5 <i>Mesoplodon layardii</i> (Strap-toothed Whale)	28
7.6 <i>Mesoplodon mirus</i> (True's Beaked Whale)	29
7.7 <i>Ziphius cavirostris</i> (Cuvier's Beaked Whale).....	29
7.8 <i>Hyperoodon planifrons</i> (Southern Bottlenose Whale).....	29

SUBORDER MYSTICETI
(Baleen Whales)

	Page
1. Family Balaenopteridae	
1.1 <i>Balaenoptera acutorostrata</i> (Minke Whale)	31
1.2 <i>Balaenoptera edeni</i> (Bryde's Whale)	31
1.3 <i>Balaenoptera musculus</i> (Blue Whale)	32
1.4 <i>Balaenoptera physalus</i> (Fin Whale)	33
1.5 <i>Balaenoptera</i> spp.	33
1.6 <i>Megaptera novaeangliae</i> (Humpback Whale).....	34
2. Family Neobalaenidae	
2.1 <i>Caperea marginata</i> (Pygmy Right Whale).....	35
3. Family Balaenidae	
3.1 <i>Eubalaena australis</i> (Southern Right Whale).....	36

SPECIES SUMMARY

Schematic diagram showing cetacean material held in the Museum of Victoria. The first number in parentheses refers to the total number of specimens, and the second to the number of specimens from Victorian waters. In all, there are 238 cetacean specimens in the collection, 197 odontocetes and 41 mysticetes.

ORDER CETACEA

Suborder Odontoceti

Family

- Platanistidae (1,0)
- Delphinidae (132,113)
- Phocoenidae (3,0)
- Monodontidae (4,0)
- Kogiidae (9,9)
- Physeteridae (28,15)
- Ziphiidae (20,16)

Suborder Mysticeti

Family

- Balaenopteridae (29,20)
- Neobalaenidae (7,4)
- Balaenidae (5,4)
- Eschrichtiidae (Nil)



THE COMMON DOLPHIN
Cuvier.

COMMON DOLPHIN – Plate from *The Naturalist's Library* 1852 by W. Jardine

COLLECTION DETAILS

ORDER CETACEA

SUBORDER ODONTOCETI (Toothed Whales)

1. FAMILY PLATANISTIDAE

1.1 *Platanista gangetica* (Roxburgh)Ganges River Dolphin

C27417 Adult. Articulated skeleton.

Data: India. Received from E. Gerrard Jnr, 29 August 1889.

Remarks: Original number 54593.

2. FAMILY DELPHINIDAE

2.1 *Stenella attenuata* (Gray)Pantropical Spotted Dolphin

C28275 Adult female. Skull.

Data: Pacific Ocean (12°41'N 91°50'W). Collected by J.A. Halas on board the merchant vessel *Bold Contender*, 17 February 1975.

Remarks: Original numbers JAH 181 and ZMA 17.763. Total body length 1.94 m. Exchange specimen from P.J.H van Bree (ZMA), 30 January 1991.

2.2 *Stenella coeruleoalba* (Meyen)Striped Dolphin

C23562 Adult. Skull.

Data: Europe. Received c. 1859.

Remarks: Original number 135.

2.3 *Stenella longirostris* (Gray)Spinner Dolphin

C28276 Adult male. Skull.

Data: Eastern Tropical Pacific. Collected by A.D. Bates on board the merchant vessel *Martinac*, 10 March 1975.

Remarks: Original numbers ADB 176 and ZMA 18.763. Total body length 1.86 m. Exchange specimen from P.J.H van Bree (ZMA), 30 January 1991.

C28546 Adult. Skull.

Data: Sertung Island, Indonesia (6°06'S 105°23'E). Collected by P.A. Rawlinson, 19 September 1984. Presented by A.J. Coventry (NMV).

2.4 *Delphinus delphis* LinnaeusCommon Dolphin

C11069 Skull.

Data: Near Trousers Point, Flinders Island, Tasmania, Aust. (40°13'S 148°02'E). Collected by M. Schulz, January 1973.

Remarks: Specimen not located.

C14518 Adult. Skull (lacking mandibles).

Data: King Island, Tasmania, Aust. (39°55'S 144°00'E). Presented by W.S. Wright, 12 May 1926.

C14519 Adult. Skull (damaged and lacking mandibles).

Data: Near Woodside, Ninety Mile Beach, Victoria, Aust. (38°32'S 146°58'E). Presented by J. Lowe, 26 September 1913.

C16073 Skull (lacking mandibles).

Data: Wineglass Bay, Tasmania, Aust. (42°10'S 148°18'E). Collected by C. Gibson, January 1976 and presented 2 January 1976.

C22195 Adult male. Articulated skeleton.

Data: Port Phillip Bay, Victoria, Aust. (38°06'S 144°53'E). Collected by Pollock, 30 October 1902.

Remarks: Original number 58543.

C23604 Articulated right pectoral fin.

Data: Port Melbourne, Victoria, Aust. (37°50'S 144°55'E). Presented by P.A. Jenkins, 14 October 1920.

Remarks: Original numbers 61259 and R8072.

C24941 Adult female. Skull.

Data: South Melbourne Beach, Victoria, Aust. (37°50'S 144°58'E). Collected by Ms Lanagan, 4 April 1978. Presented by FWD, 27 May 1981.

Remarks: Original number FWD 11631. Decomposed carcass found on beach.

C24942 Adult male. Skeleton.

Data: Carrum, Victoria, Aust. (38°05'S 145°07'E). Collected by R.M. Warneke (FWD), 30 April 1974 and presented 27 May 1981.

Remarks: Original numbers RW 1126 and FWD 9650.

C24943 Adult male. Skull.

Data: MacDonald Reserve, Black Rock, Victoria, Aust. (37°59'S 145°01'E). Collected by R.M. Warneke (FWD), 3 October 1969 and presented 27 May 1981.

Remarks: Original numbers RW 445 and FWD 8043.

C24964 Adult female. Skeleton.

Data: St Kilda, Victoria, Aust. (37°52'S 144°59'E). Collected by R.M. Warneke (FWD), 1 May 1974.

Remarks: Original numbers RW 1127 and FWD 9652.

C24967 Left mandible.

Data: South side of Drum Island, Victoria, Aust. (38°43'S 146°39'E). Collected by K.R. Kerry, 15 December 1974. Presented by FWD.

Remarks: Original number FWD 10253.

C24969 Skull (damaged and lacking mandibles).

Data: Near Golden Beach, Ninety Mile Beach, Victoria, Aust. (38°13'S 147°25'E). Collected by K.C. Norris, January 1972. Presented by FWD.

Remarks: Original number FWD 8287.

C24970 Skull (lacking mandibles).

Data: Big Green Island, Tasmania, Aust. (40°11'S 147°59'E). Collected by F.I. Norman (FWD), January 1971.

Remarks: Original number FWD 8219.

C24971 Skull (lacking mandibles).

Data: The Esplanade, Lakes Entrance, Victoria, Aust. (37°53'S 148°00'E). Collected by R. McGrath (FWD), 16 May 1972.

Remarks: Original number FWD 8062. Weathered skull found on beach.

C24973 Male. Skeleton.

Data: Beaumaris Beach, Victoria, Aust. (37°59'S 145°01'E). Collected by Mr Sinclair, 17 January 1974. Presented by FWD.

Remarks: Original number FWD 9412.

C24991 Adult male. Skull.

Data: Brighton Beach, Victoria, Aust. (37°55'S 144°59'E). Collected by J.H. Seebeck (FWD) and R.M. Warneke (FWD), 18 May 1979.

Remarks: Original number FWD 11942.

C25083 Caudal vertebrae (9), lumbar vertebrae (3) and ribs (2).

Data: 2 km south of Brooms Head, New South Wales, Aust. (29°37'S 153°20'E). Collected by M. Schulz, 11 February 1981 and presented 20 December 1981.

Remarks: Original number W4297. Posterior part of carcass only found washed up on beach. Tentative species identification.

C25800 Male. Skeleton.

Data: Eagles Nest, Venus Bay, Victoria, Aust. (38°40'S 145°40'E). Stranded c. 14 October 1981. Collected by L. Huxley (NMV), H. Vucinic (NMV) and R.E. Fordyce, 19 October 1981.

Remarks: Original number W4354. Total body length approximately 1.66 m (flukes missing).

C26193 Young male. Skeleton.

Data: The Narrows, Point Lonsdale, Victoria, Aust. (38°16'S 144°38'E). Stranded 7 December 1983. Collected by A. Stephens (VIMS), 7 December 1983.

Remarks: Original number W4432. Total body length 1.74 m. Weight 45.8 kg.

Reference: Dixon (1984).

C26628 Male. Skull.

Data: Summerland Bay, Phillip Island, Victoria, Aust. (38°31'S 145°09'E). Collected by D.L. Andrew (NMV), 16 November 1981.

Remarks: Original number W4356.

C27319 Skull (lacking left mandible).

Data: Western side of Rame Head, near Wingan Inlet, Victoria, Aust. (37°47'S 149°29'E). Collected by R. Thompson (FNCV), September 1987. Presented by FWD, 18 September 1987.

Remarks: Previously identified as *Stenella attenuata*. Weathered skull found in sand dunes.

Reference: Dixon (1989).

C27916 Adult. Skull.

Data: 4.5 km east of mouth of Mueller River, towards Petrel Point, Victoria, Aust. (37°46'S 149°23'E). Collected by R. Thompson (FNCV), 24 August 1989 and presented 22 March 1990.

Remarks: Decomposed carcass found on beach.

C28103 Adult. Skull.

Data: Hobsons Bay, Victoria, Aust. (37°51'S 144°56'E). Registered on 13 March 1879.

Remarks: Original numbers 43806 and 43807. The post-cranial skeleton of this specimen was destroyed in 1925.

Reference: Wakefield (1967).

C28678 Adult female. Skull.

Data: Near mouth of Red River, near Sandpatch Point, Victoria, Aust. (37°43'S 149°33'E). Collected by R. Thompson (FNCV), 20 June 1990 and presented 11 May 1992.

Remarks: Total body length c. 1.8 m.

C28878 Neonate female. Skull (fragmented).

Data: 300 m west of mouth of Jamieson Creek, near Lorne, Victoria, Aust. (143°55'S 38°36'E). Stranded 26 January 1989. Collected by FWD, 26 January 1989 and presented 22 September 1993.

Remarks: Original numbers FWD 14490 and W4994. Total body length 0.99 m.

C28894 Adult female. Skull.

Data: Black Rock, Victoria, Aust. (37°59'S 145°01'E). Stranded 20 January 1989. Collected by R.M. Warneke (FWD), 20 January 1989 and presented 22 September 1993.

Remarks: Original numbers FWD 14488 and W4995. Total body length 1.86 m. Weight 65.5 kg.

C28895 Adult female. Skull, right scapula, blubber, muscle, some internal organs, stomach contents, endoparasites.

Data: Mills Beach, approximately 70 m west of Mornington Life Saving Club, Victoria, Aust. (38°13'S 145°03'E). Stranded 11 September 1993. Collected by R.M. Warneke (FWD), 16 September 1993 and presented 22 September 1993.

Remarks: Original number W4996. Total body length 1.93 m.

C28907 Skull.

Data: Bonbeach, Victoria, Aust. (38°04'S 145°07'E). Collected by FWD, 22 March 1984 and presented 6 October 1993.

Remarks: Original number FWD 13353.

C28908 Juvenile female. Skull.

Data: Woolamai Beach, Phillip Island, Victoria, Aust. (38°33'S 145°20'E). Collected by G. Griffin (FWD), 27 January 1985. Presented by FWD, 6 October 1993.

Remarks: Original number FWD 13541. Total body length 1.01 m.

C29365 Adult female. Skull.

Data: Barwon Heads, Victoria, Aust. (38°17'S 144°30'E). Stranded 29 October 1993. Presented by R.J. Norman, 8 March 1994.

Remarks: Original numbers W1359/93 and W5002. Total body length 1.98 m. Lactating.

C29366 Juvenile female. Skeleton.

Data: Thirteenth Beach, Victoria, Aust. (38°17'S 144°28'E). Collected 7 January 1992. Presented by FWD, 16 February 1994.

Remarks: Original numbers FWD 14946 and W5000. Total body length 1.05 m.

C29501 Male. Skull (partly fragmented), stomach contents.

Data: The Narrows, Point Nepean, Victoria, Aust. (38°19'S 144°40'E). Stranded 11 December 1991. Collected by B. Dowling (FWD), 11 December 1991 and presented 22 April 1994.

Remarks: Original number FWD 14941. Total body length 1.8 m. Severe propeller wounds on carcass.

C29522 Skull.

Data: 2 km north of Boydtown, New South Wales, Aust. (37°06'S 149°53'E). Collected by N. Cryer, c. January 1970 and presented 2 June 1994.

Remarks: Decomposed carcass found on beach.

C29588 Juvenile female. Skull (fragmented).

Data: Near Portsea Life Saving Club, Victoria, Aust. (38°19'S 144°43'E). Stranded alive 15 March 1988. Presented by FWD, 6 June 1994.

Remarks: Original number FWD 14417. Total body length 1.22 m.

C29589 Skull.

Data: Sunderland Bay, Phillip Island, Victoria, Aust. (38°30'S 145°16'E). Stranding reported 18 March 1988. Presented by FWD, 6 June 1994.

Remarks: Total body length c. 1.5 m (tail missing). Decomposed carcass. Shark wounds evident.

C29590 Male. Skull.

Data: Eastern View, Victoria, Aust. (38°28'S 144°03'E). Stranding reported 12 August 1988. Presented by FWD, 6 June 1994.

Remarks: Total body length 1.8 m. Animal had been shot.

C29591 Juvenile female. Skull (sectioned longitudinally), scapulae, articulated left pectoral fin.

Data: Approximately 1.5 km east of Paradise Beach, Victoria, Aust. (38°11'S 147°26'E). Stranded c. 14 October 1990. Presented by FWD, 6 June 1994.

Remarks: Total body length 1.2 m. Mauled by shark.

C29592 Male. Skull.

Data: Near Peterborough, Curdies Inlet entrance, Victoria, Aust. (38°37'S 142°53'E). Stranding reported 3 March 1991. Presented by FWD, 6 June 1994.

Remarks: Total body length 1.72 m. Decomposed carcass.

C29593 Juvenile female. Skull (fragmented).

Data: Mallacoota, Victoria, Aust. (37°35'S 149°45'E). Stranded c. 4 May 1991. Presented by FWD, 6 June 1994.

Remarks: Original number FWD 14846. Total body length 1.3 m. Calf.

C29672 Adult male. Skull, frozen left pectoral fin.

Data: Blairgowrie, Victoria, Aust. (38°22'S 144°46'E). Stranded 28 July 1994. Collected by FWD, 28 July 1994.

Remarks: Original number W1117/94. Total body length 2.06 m. Weight c. 150 kg.

C29728 Adult female with male foetus. Skull, frozen foetus.

Data: Lorne, Victoria, Aust. (38°33'S 143°58'E). Stranded 29 September 1994. Collected by J. Tipping (FWD), 29 September 1994 and presented 12 October 1994.

Remarks: Adult total body length 1.9 m. Foetal total body length 0.35 m. Foetal weight 0.65 kg.

2.5 *Tursiops truncatus* (Montagu)Bottlenose Dolphin

C7799 Adult. Skull.

Data: Lorne, Victoria, Aust. (38°32'S 143°58'E). Collected by W.M. Bren (FWD), 18 May 1967 and presented May 1967.

Remarks: Original number W2604.

C11270 Juvenile. Skull.

Data: Port Melbourne, Victoria, Aust. (37°50'S 144°55'E). Collected by G.J. Browning (NMV), 1968.

Remarks: Possibly neonate.

C11271 Skull (lacking left mandible).

Data: Thalia Point, Lake Victoria, Victoria, Aust. (38°04'S 147°29'E). Collected by B. Gault.

C21940 Skull (fractured and lacking mandibles).

Data: Madura, Western Australia, Aust. (31°54'S 127°01'E). Collected by P.F. Mullumby, December 1977.

C23490 Male. Skeleton.

Data: 1 km west of Lorne, Victoria, Aust. (38°32'S 143°58'E). Stranded on 3 November 1979. Collected by T.V. Rich (NMV) and T.F. Flannery (AM), 3 November 1979.

Remarks: Original number W4202. Total body length 2.4 m. Weight 120.4 kg.

C24944 Adult female. Skull, stomach contents.

Data: Elwood, Victoria, Aust. (37°54'S 144°59'E). Collected by J.H. Seebeck (FWD), 23 June 1967 and presented 27 May 1981.

Remarks: Original number FWD 8385.

C24960 Adult female. Skull.

Data: Bass River, Bass, Victoria, Aust. (38°24'S 145°38'E). Collected by K. Brown and R.M. Warneke (FWD), 20 October 1980.

Remarks: Original number FWD 12364. Found dead in river.

C24965 Skull (lacking mandibles).

Data: Possibly from New Guinea. Collected by G. De Jong. Presented by FWD.

Remarks: Registered by FWD in September 1972. Original number FWD 8387.

C24966 Adult. Skull (lacking mandibles).

Data: Near Lakes Entrance, Victoria, Aust. (37°53'S 148°00'E). Collected by R. Casement on the *Audrey-J*, 1 August 1979. Presented by FWD.

Remarks: Original number FWD 12049. Skull located at a depth of 14 m during dredging.

C24987 Female. Skull, fused cervical vertebrae (3).

Data: 1.6 km east of Lorne, Victoria, Aust. (38°32'S 143°58'E). Collected by W.M. Bren (FWD), 18 May 1967.

Remarks: Original number FWD 10348.

C24988 Juvenile male. Skull.

Data: Woolamai Beach, Victoria, Aust. (38°33'S 145°20'E). Collected by C. Nancarrow (FWD), 28 September 1977.

Remarks: Original number FWD 11261. Stranded alive.

C24989 Skull (lacking mandibles).

Data: Point Danger, Victoria, Aust. (38°24'S 141°39'E). Collected by A.C. Beauglehole and F.W. Carr, 14 July 1979. Presented by FWD.

Remarks: Original number FWD 12094.

C24990 Male. Skull.

Data: Killarney Beach, Victoria, Aust. (38°21'S 142°20'E). Collected by P. Kelly (FWD), 27 January 1981.

Remarks: Original number FWD 12458. Head only washed up on beach.

C25028 Adult. Skull

Data: Hobsons Bay, Victoria, Aust. (37°51'S 144°56'E). Registered 28 October 1869.

Remarks: Original number 27299. Right mandible dissected to display dentition.

C25071 Male. Skeleton.

Data: West Geelong, Stingaree Bay, Victoria, Aust. (38°09'S 144°24'E). Stranded alive between 15-20 December 1979. Collected by J.M. Dixon (NMV) and L. Huxley (NMV), 11 April 1980.

Remarks: Original number W4235.

C25706 Left mandible.

Data: Beach at Western Treatment Plant, Werribee, Victoria, Aust. (37°59'S 144°42'E). Collected by S. Thurle, 11 January 1968. Presented by FWD.

Remarks: Original number FWD 8691.

C27093 Right mandible.

Data: Murtcaim Wildlife Reserve, Victoria, Aust. (38°03'S 144°31'E). Collected by FNCV, 15 February 1987 and presented 18 March 1987.

Remarks: Original number MSG 353.

C28677 Adult. Skull.

Data: Southern end of Waratah Bay, Wilsons Promontory, Victoria, Aust. (38°57'S 146°15'E). Collected by R. Thompson (FNCV), 25 September 1991 and presented 11 May 1992.

Remarks: Original number MSG 458.

C28719 Adult. Articulated skeleton (with moulded cast covering left side).

Data: Wilsons Promontory, Victoria, Aust. (c. 39°00'S 146°16'E). Collected by J.A. Kershaw (NMV). Registered August 1927.

Remarks: Original number 61258.

Reference: Wakefield (1967)

C28727 Thoracic vertebra.

Data: Mouth of Snowy River, near Marlo, Victoria, Aust. (37°48'S 148°32'E). Collected by M. Barber, April 1992. Presented by P. Barber, 24 April 1992.

Remarks: Single bone found on beach.

C28760 Adult male. Skull.

Data: Approximately 50 metres WNW of Hampton Angling Club, Hampton, Victoria, Aust. (37°56'S 145°00'E). Collected by J.M. Dixon (NMV), 13 November 1992.

Remarks: Original number W4969. Total body length 2.8 m. Decomposed carcass found on beach.

C28838 Immature female. Skull, frozen pectoral fins and caudal region of body.

Data: Loch Sport, Victoria, Aust. (38°03'S 147°35'E). Stranded 20 May 1993. Collected by R.J. Norman, 21 May 1993 and presented 3 June 1993.

Remarks: Total body length 1.63 m. Weight c. 80 kg.

C28904 Adult. Skull.

Data: Mouth of Skeleton Creek, near Altona Meadows, Victoria, Aust. (37°53'S 144°47'E). Collected by T. Hunt, 23 January 1994 and presented 28 January 1994.

Remarks: Cranial remains found on eastern bank of creek.

C28905 Juvenile female. Skull (fragmented), left scapula, ribs (3).

Data: Near mouth of Aire River, near Hordern Vale, Victoria, Aust. (38°47'S 143°28'E). Stranded 31 January 1994. Collected by FWD and L. Frigo (NMV), 5 February 1994.

Remarks: Total body length 1.4 m.

C28909 Juvenile. Skull (lacking right mandible).

Data: Queenscliff, Victoria, Aust. (38°16'S 144°40'E). Collected by FWD, 30 January 1985 and presented 6 October 1993.

Remarks: Original number FWD 13544.

C28972 Adult female. Skull.

Data: San Remo, Victoria, Aust. (38°32'S 145°22'E). Stranded 25 November 1991. Collected by K. Brown (FWD), 26 November 1991 and presented 22 April 1994.

Remarks: Original number FWD 14937. Total body length 2.65 m.

C29459 Juvenile. Skull (fragmented).

Data: Nobles Rocks, Discovery Bay, Victoria, Aust. (38°07'S 141°07'E). Collected by R. Jackson, 3 January 1984. Presented by FWD, 22 April 1994.

Remarks: Original number FWD 13354. Probably calf of C29460.

C29460 Adult female. Skull (sectioned longitudinally).

Data: Sutton Rocks, Discovery Bay, Victoria, Aust. (38°09'S 141°11'E). Stranded 4 January 1984. Collected by P. Du Guesclin (FWD), 4 January 1984 and presented 22 April 1994.

Remarks: Original number FWD 13337. Stranded at Nobles Rocks, 3 January 1984 and at Sutton Rocks, 4 January 1984. Probably mother of C29459.

C29461 Female. Skeleton (lacking right mandible and bones of pectoral fins).

Data: Port Melbourne, near Princes Pier, Victoria, Aust. (37°51'S 144°55'E). Collected by FWD, 8 March 1984 and presented 22 April 1994.

Remarks: Original number FWD 13348.

C29462 Male. Skull (tip of rostrum damaged).

Data: Red Bluff Beach, Port Phillip Bay, Victoria, Aust. (37°58'S 145°01'E). Stranded 3 January 1983. Collected by R.M. Warneke (FWD), 5 January 1983 and presented 22 April 1994.

Remarks: Original number FWD 12950.

C29463 Adult male. Skull (sectioned longitudinally).

Data: McLennan Strait, Victoria, Aust. (38°03'S 147°28'E). Collected by R. Chatto (FWD), 8 November 1984 and presented 22 April 1994.

Remarks: Original number FWD 13539. Total body length 2.87 m. Decomposed carcass.

C29464 Juvenile. Skull (fragmented).

Data: Lake Tyers, Nowa Nowa Arm, Victoria, Aust. (37°50'S 148°07'E). Collected by P. O'Riley (FWD), 20 April 1983 and presented 22 April 1994.

Remarks: Original number FWD 13045. Born in lake. Drowned in mesh net.

C29506 Adult female. Skull, left scapula, frozen left pectoral fin.

Data: Tideway Beach, near Sorrento, Victoria, Aust. (38°21'S 144°46'E). Stranded 16 April 1994. Presented by R.J. Norman, 26 May 1994.

Remarks: Original number W550/94. Total body length 2.41 m. Lactating. Probably mother of C29507.

C29507 Juvenile male. Skull, stomach contents.

Data: Tootgarook, Victoria, Aust. (38°22'S 144°51'E). Stranded 29 April 1994. Presented by R.J. Norman, 26 May 1994.

Remarks: Original number W714/94. Total body length 1.63 m. Weight c. 60 kg. Estimated to be 3-5 months of age. Probably calf of C29506.

C29577 Adult female. Skull.

Data: Safety Beach, Victoria, Aust. (38°19'S 144°59'E). Stranded alive c. 23 July 1985. Collected by FWD, 23 July 1985 and presented 6 June 1994.

Remarks: Original number FWD 13585. Total body length 2.44 m. Weight c. 135 kg.

C29578 Adult female. Skull.

Data: Altona, Victoria, Aust. (37°52'S 144°50'E). Stranded c. 12 September 1985. Collected by R.M. Warneke (FWD), 19 September 1985 and presented 6 June 1994.

Remarks: Original number FWD 13658. Total body length 2.48 m. Decomposed carcass.

C29579 Adult female. Skull.

Data: Western Beach, Geelong, Victoria, Aust. (38°09'S 144°21'E). Stranding reported 14 October 1985. Presented by FWD, 6 June 1994.

Remarks: Total body length 2.67 m.

C29580 Adult male. Skull.

Data: Murrells Beach, Victoria, Aust. (38°24'S 141°31'E). Stranded c. 17 January 1986. Presented by FWD, 6 June 1994.

Remarks: Original number FWD 14021. Total body length 2.84 m.

C29581 Adult male. Skull.

Data: East Beach, Port Fairy, Victoria, Aust. (38°22'S 142°16'E). Stranding reported 22 January 1986. Presented by FWD, 6 June 1994.

Remarks: Original number FWD 13743. Total body length 2.53 m. Propeller wounds on carcass.

C29582 Adult female. Skull.

Data: Hollands Landing, Victoria, Aust. (38°03'S 147°27'E). Stranded c. 8 May 1986. Presented by FWD, 6 June 1994.

Remarks: Total body length c. 2.5 m. Drowned in net. Lactating. Probably mother of C29583.

C29583 Juvenile male. Skull (fragmented).

Data: Sperm Whale Head, Victoria, Aust. (37°58'S 147°43'E). Stranding reported 26 May 1986. Presented by FWD, 6 June 1994.

Remarks: Original number FWD 13797. Total body length 1.76 m. Emaciated. Probably calf of C29582.

C29584 Adult female. Skull.

Data: Torquay Surf Beach, Victoria, Aust. (38°21'S 144°19'E). Stranded c. 17 April 1988. Collected by R.M. Warneke (FWD) and presented 6 June 1994.

Remarks: Total body length 2.18 m. Probably asphyxiated on a small Barracouta.

C29585 Adult male. Skull.

Data: Mouth of Wild Dog Creek, Apollo Bay, Victoria, Aust. (38°41'S 143°40'E). Stranded alive 13 May 1990. Presented by C. Murdoch (FWD), 6 June 1994.

Remarks: Total body length 3.0 m.

C29586 Adult male. Skull.

Data: Rippleside Beach, Victoria, Aust. (38°08'S 144°21'E). Stranding reported 27 July 1991. Presented by FWD, 6 June 1994.

Remarks: Total body length 2.61 m. Very old animal.

C29587 Adult male. Skull.

Data: Kennedy Point, Victoria, Aust. (38°28'S 145°25'E). Stranding reported 1 June 1992. Presented by FWD, 6 June 1994.

Remarks: Total body length c. 2.9 m. Decomposed carcass.

C29667 Adult female. Skull.

Data: Ocean Grove, Victoria, Aust. (38°17'S 144°30'E). Stranded c. 8 January 1987. Presented by FWD, 21 June 1994.

Remarks: Original number FWD 14170. Total body length 2.53 m. Old animal (teeth very worn).

C29673 Adult male. Skull.

Data: Point Henry, Corio Bay, Victoria, Aust. (38°08'S 144°26'E). Stranding reported 14 June 1994. Collected by Deakin University, 14 June 1994.

Remarks: Total body length 2.74 m. Weight 155 kg.

2.6 *Lagenodelphis hosei* Fraser Fraser's Dolphin

C24959 Female. Skeleton.

Data: Corio Bay, Victoria, Aust. (38°07'S 144°24'E). Collected by R. Pietsch (FWD), 7 January 1978.

Remarks: Original number FWD 11324. Total body length 2.0 m. Stranded alive.

References: McColl and Obendorf (1982), Baker (1990).

C24992 Female. Skeleton.

Data: Corio Bay, Victoria, Aust. (38°07'S 144°24'E). Collected by I. Smith, 11 January 1978. Presented by FWD.

Remarks: Original number FWD 11333. Total body length 2.2 m. Pregnant.

References: McColl and Obendorf (1982), Baker (1990).

C24993 Male. Skull.

Data: Corio Bay, Victoria, Aust. (38°07'S 144°24'E). Collected by I. Smith, 23 January 1978. Presented by FWD.

Remarks: Original number FWD 11344. Total body length c. 2 m. Decomposed carcass.

References: McColl and Obendorf (1982), Baker (1990).

2.7 *Pseudorca crassidens* (Owen) False Killer Whale

C24985 Female. Skull, stomach contents.

Data: West Rosebud, Victoria, Aust. (38°22'S 144°52'E). Collected by K. Peisley (FWD) and F.T. Baum (FWD), 23 June 1965.

Remarks: Original number FWD 8018. Stranded alive.

Reference: Wakefield (1967).

C26624 Female. Skull.

Data: Approximately 4 km east of mouth of Mueller River, towards Petrel Point, Victoria, Aust. (37°46'S 149°23'E). Stranded 18 January 1983. Collected by G. Smith, 18 January 1983.

Remarks: Original number W4424. From mass stranding of about 90 animals located over 7 km.

C26625 Male. Skull.

Data: Approximately 4 km east of mouth of Mueller River, towards Petrel Point, Victoria, Aust. (37°46'S 149°23'E). Stranded 18 January 1983. Collected by G. Smith, 18 January 1983.

Remarks: Original number W4423. From mass stranding of about 90 animals located over 7 km.

C28675 Skull (lacking right mandible), fused cervical vertebrae.

Data: Snake Island, Victoria, Aust. (38°45'S 146°28'E). Collected by R. Thompson (FNCV), 1 April 1991 and presented 11 May 1992.

Remarks: Original number MSG 457. Bones found on beach.

C29457 Right maxillary fragments.

Data: Stephens Bay, Tasmania, Aust. (43°24'S 145°57'E). Collected by M. Schulz, 30 December 1988. Presented by FWD, 6 October 1993.

Remarks: Original number FWD 14492. Bones found on beach.

C29465 Juvenile male. Skull (fragmented).

Data: Approximately 4 km east of mouth of Mueller River, towards Petrel Point, Victoria, Aust. (37°46'S 149°23'E). Stranded 18 January 1983. Collected by R.M. Warneke (FWD), 20 January 1983 and presented 22 April 1994.

Remarks: Original numbers RW 11 and FWD 12965. Total body length 2.08 m. From mass stranding of about 90 animals located over 7 km.

C29502 Teeth (2).

Data: Approximately 4 km east of mouth of Mueller River, towards Petrel Point, Victoria, Aust. (37°46'S 149°23'E). Stranded 18 January 1983. Presented by FWD, 22 April 1994.

Remarks: Original number FWD 13239. From mass stranding of about 90 animals located over 7 km.

C29503 Adult. Skull.

Data: Approximately 4 km east of mouth of Mueller River, towards Petrel Point, Victoria, Aust. (37°46'S 149°23'E). Stranded 18 January 1983. Presented by FWD, 22 April 1994.

Remarks: Original number FWD 13324. From mass stranding of about 90 animals located over 7 km.

C29504 Tympanic bullae, teeth.

Data: Approximately 4 km east of mouth of Mueller River, towards Petrel Point, Victoria, Aust. (37°46'S 149°23'E). Stranded 18 January 1983. Presented by FWD, 22 April 1994.

Remarks: Original number FWD 13325. From mass stranding of about 90 animals located over 7 km.

C29505 Skull (fragmented).

Data: Approximately 4 km east of mouth of Mueller River, towards Petrel Point, Victoria, Aust. (37°46'S 149°23'E). Stranded 18 January 1983. Presented by FWD, 22 April 1994.

Remarks: Original number FWD 13350. From mass stranding of about 90 animals located over 7 km.

2.8 *Orcinus orca* (Linnaeus).....Killer Whale

C23569 Adult. Rib.

Data: Hobsons Bay, near Williamstown, Victoria, Aust. (37°52'S 144°54'E).

Remarks: Total body length of 12.2 m recorded in archival records.

C24934 Female. Skull.

Data: Bridgewater Bay, Victoria, Aust. (38°23'S 141°27'E). Collected by J. Davidson and W.M. Bren (FWD), 17 August 1970 and presented 27 May 1981.

Remarks: Original numbers RW 591 and FWD 5475.

C28750 Adult. Proximal section of left mandible (including 4 teeth).

Remarks: This specimen may be that referred to by Wakefield (1967) collected near Wilsons Promontory Lighthouse, Victoria, Aust. (39°08'S 146°25'E) and presented by G.H. Butler, 23 January 1933. The validity of this record cannot be confirmed.

C29109 Adult male. Skull.

Data: West of entrance to Wingan Inlet, Victoria, Aust. (37°45'S 149°30'E). Stranded 12 April 1988. Presented by FWD, 22 April 1994.

Remarks: Total body length c. 7.6 m. Very old animal (teeth worn to gums).

C29576 Juvenile. Skull (fragmented).

Data: Flaxman Hill, Bay of Islands, Victoria, Aust. (38°32'S 142°45'E). Stranded 26-27 February 1988. Presented by FWD, 6 June 1994.

C29732 Adult male. Skull (sectioned longitudinally), right scapula, frozen right pectoral fin, blubber, laryngeal complex, tissue samples, stomach contents, endoparasites.

Data: Sealers Cove, Wilsons Promontory, Victoria, Aust. (39°01'S 146°26'E). Stranded alive 18 November 1994. Collected by FWD, 18 November 1994 and presented 21 November 1994.

Remarks: Original number W5034. Total body length c. 7.5 m.

2.9 *Grampus griseus* (G. Cuvier).....Risso's Dolphin

C10924 Adult. Skeleton.

Data: Port Welshpool, Victoria, Aust. (38°42'S 146°28'E). Collected by J.A. Kershaw (NMV), c. February 1926.

Remarks: Original number R10762.

C29367 Male. Skull, blubber, muscle.

Data: Loch Sport, Victoria, Aust. (38°03'S 147°35'E). Stranded c. 11 March 1991. Presented by R.M. Warneke (FWD), 22 September 1993.

Remarks: Total body length 3.04 m.

C29575 Skull (lacking mandibles).

Data: Near Manns Beach, Victoria, Aust. (38°40'S 146°51'E). Collected by I. Carroll (FWD), 6 April 1986 and presented 6 June 1994.

Remarks: Skull found on beach.

2.10 *Globicephala melas* (Traill) Long-finned Pilot Whale

C10910 Skull (lacking left mandible).

Data: Flinders Island, Tasmania, Aust. (40°01'S 148°02'E). Collected by T. Shaik, 1972. Presented by M.K. Doery, 30 August 1978.

C11272 Skull.

Data: Naracoopa, King Island, Tasmania, Aust. (39°55'S 144°08'E). Collected by M.G. Crow, 15 April 1973 and presented May 1973.

Remarks: Skull found on beach.

C23587 Tympanic bullae.

Data: Mouth of Glenelg River, Nelson, Victoria, Aust. (38°03'S 141°01'E). Collected by V. Miller, February 1927 and presented 28 May 1927.

C23600 Fused cervical vertebrae, lumbar vertebra.

Data: Southern end of Stephens Bay, Tasmania, Aust. (43°24'S 145°57'E). Presented by M. Schulz, 21 December 1979.

Remarks: Found with several seal and whale bones on beach.

C23602 Left mandible.

Data: Southern end of Stephens Bay, Tasmania, Aust. (43°24'S 145°57'E). Presented by M. Schulz, 21 December 1979.

Remarks: Found with several seal and whale bones on beach.

C23603 Left mandible.

Data: Southern end of Stephens Bay, Tasmania, Aust. (43°24'S 145°57'E). Presented by M. Schulz, 21 December 1979.

Remarks: Found with several seal and whale bones on beach.

C24938 Male. Skull.

Data: Waterloo Bay, Wilsons Promontory, Victoria, Aust. (39°05'S 146°27'E). Collected by R.M. Warneke (FWD), 9 December 1965 and presented 27 May 1981.

Remarks: Original number FWD 8016.

C24939 Male. Skull.

Data: Waterloo Bay, Wilsons Promontory, Victoria, Aust. (39°05'S 146°27'E). Collected by R.M. Warneke (FWD), 9 December 1965 and presented 27 May 1981.

Remarks: Original number FWD 8014. Stranded alive.

C24940 Female. Skull.

Data: Waterloo Bay, Wilsons Promontory, Victoria, Aust. (39°05'S 146°27'E). Collected by R.M. Warneke (FWD), 9 December 1965 and presented 27 May 1981.

Remarks: Original number FWD 8015. Stranded alive.

C24963 Male. Skull.

Data: Somers Beach, Victoria, Aust. (38°24'S 145°10'E). Collected by A. Reid, 7 November 1964. Presented by FWD.

Remarks: Original number FWD 8384.

C24986 Male. Skull.

Data: Tower Hill Beach, Victoria, Aust. (38°20'S 142°21'E). Collected by J.H. Seebeck (FWD), 28 January 1966.

Remarks: Original number FWD 8058.

C25626 Skull (lacking mandibles).

Data: East Beach, Port Fairy, Victoria, Aust. (38°22'S 142°16'E). Collected by R. Priest, 21 May 1982. Presented by FWD.

Remarks: Original number FWD 12805. Eroded and water-worn skull.

C25826 Juvenile. Skull (fragmented and lacking left mandible).

Data: White Sands Outlet, Discovery Bay, Victoria, Aust. (38°13'S 141°14'E). Collected by B. Waller (NPS). Presented 29 October 1981.

C27878 Skull (lacking mandibles).

Data: Flinders Island, Tasmania, Aust. (40°01'S 148°02'E). Collected by K. Martin, 1988 and presented 10 October 1989.

Remarks: Skeletal remains found on beach.

C28676 Skull.

Data: Waratah Bay, Wilsons Promontory, Victoria, Aust. (38°55'S 146°13'E). Collected by R. Thompson (FNCV), 1 May 1992 and presented 11 May 1992.

Remarks: Original number MSG 459. Skeletal remains found on beach.

C28877 Neonate female. Skull (fragmented), left scapula, frozen left pectoral fin.

Data: Cape Schanck, Victoria, Aust. (38°30'S 144°53'E). Stranded alive 4 August 1993. Presented by R.M. Warneke (FWD), 22 September 1993.

Remarks: Original number W4993. Total body length 1.7 m. Weight 64.5 kg.

C29368 Male. Skull.

Data: Lady Bay, Warrnambool, Victoria, Aust. (38°24'S 142°29'E). Collected by G. Hanel (FWD), 17 December 1991 and presented 16 February 1994.

Remarks: Original numbers FWD 14942 and W5001. Total body length 3.8 m.

C29458 Juvenile male. Skull (lacking left mandible).

Data: East Beach, Port Fairy, Victoria, Aust. (38°22'S 142°16'E). Stranded 21 September 1983. Collected by FWD, 23 September 1983 and presented 22 April 1994.

Remarks: Original number FWD 13238.

3. FAMILY PHOCOENIDAE

3.1 *Australophocaena dioptrica* (Lahille)Spectacled Porpoise
C10323 Sub-adult. Skull.

Data: Cataline Point, Aerial Cove, Macquarie Island, Tasmania, Aust. (54°30'S 159°00'E).
Collected by S. Csordas, 24 July 1957 and presented by K.G. Simpson (ADM).

Remarks: Original number ANARE M/57/M/26.

Reference: Fordyce, Mattlin and Dixon (1984).

3.2 *Phocoena phocoena* (Linnaeus)Harbour Porpoise
C24749 Adult female. Skeleton.

Data: Julianadorp, near Den Helder, Netherlands (52°54'N 4°45'E). Stranded 21 October 1980.

Remarks: Original number ZMA 21.171. Total body length 1.48 m. Weight 36.5 kg.
Exchange specimen from P.J.H. van Bree (ZMA), 16 January 1981. The specimen label has
"beached at kilometer pole 4.6-99 at Julianadorp..."

C27654 Adult. Articulated skeleton.

Data: 'British coast'. Purchased from E. Gerrard Jnr, 29 August 1889.

Remarks: Original number 54592.

4. FAMILY MONODONTIDAE

4.1 *Delphinapterus leucas* (Pallas)Beluga or White Whale
C27652 Adult. Articulated skeleton.

Data: Gulf of St Lawrence, Canada (48°25'N 62°00'W). Purchased from H.A. Ward, May 1881.

Remarks: Original number 45501.

4.2 *Monodon monoceros* LinnaeusNarwhal
C10360 Adult male. Skull.

Data: Baffin Bay, Canada (72°00'N 64°00'W). Purchased from H.A. Ward, 22 April 1890.

Remarks: Original number 54796. Post-cranial skeleton listed in register but not located.

C23663 Adult male. Tusk.

Data: 'Arctic Seas'. Presented September 1875.

Remarks: Original number 34499. Tusk length 2.27 m.

C23664 Adult male. Tusk.

Data: Nil.

Remarks: Tusk length 1.62 m. Possibly tusk of C10360.

5. FAMILY KOGIIDAE

5.1 *Kogia breviceps* (Blainville).....Pygmy Sperm Whale

C23489 Male. Skeleton, stomach contents, endoparasites.

Data: Mouth of Tidal River, Norman Bay, Victoria, Aust. (39°02'S 146°20'E). Stranded 9 July 1979. Collected by L. Huxley (NMV), B. Hall (NMV) and D. Valentine (NMV), 11 July 1979.

Remarks: Original number W4155. Total body length 3.23 m.

C23565 Juvenile male. Skeleton, blubber, stomach contents, some internal organs, endoparasites.

Data: Sandy Point, Victoria, Aust. (38°49'S 146°07'E). Stranded c. 4 May 1993. Collected by J.M. Dixon (NMV) and L. Frigo (NMV), 11 May 1993.

Remarks: Original number W4970. Total body length 1.61 m. Weight c. 70 kg.

C23599 Skull (lacking mandibles).

Data: Wingan Inlet, Victoria, Aust. (37°44'S 149°30'E). Collected by M. Turner (NPS), 24 April 1979. Presented by A. Heislars (NPS), 5 April 1980.

Remarks: Carcass first noticed on beach June 1978.

C24972 Male. Skull.

Data: Cape Conran, Victoria, Aust. (37°49'S 148°144'E). Stranded c. 12 June 1975. Collected by S.A. Craig (FWD), 22 June 1975.

Remarks: Original number FWD 10252.

C24974 Rear section of cranium.

Data: Forrest Caves, Phillip Island, Victoria, Aust. (38°32'S 145°19'E). Collected by R.M. Warneke (FWD), 9 June 1970.

Remarks: Original numbers RW 535 and FWD 5199.

C24975 Male. Skull (tip of rostrum broken), atlas, axis, stomach contents.

Data: 500 m west of Point Ricardo, Victoria, Aust. (37°49'S 148°36'E). Collected by R.M. Warneke (FWD), 19 August 1975.

Remarks: Original numbers RW 1143 and FWD 10334.

C24976 Male. Skull.

Data: Shelly Beach, near Lakes Entrance, Victoria, Aust. (37°52'S 148°04'E). Stranded 21 January 1980. Collected by R. Bromley (FWD), 21 January 1980.

Remarks: Original number FWD 12160. Total body length 3.3 m.

C24977 Right mandible.

Data: Wingan Inlet, Victoria, Aust. (37°44'S 149°30'E). Collected by S.A. Craig (FWD), 12 August 1980.

Remarks: Original number FWD 12363. Found in remains of camp fire.

C29469 Juvenile female. Skull (tip of rostrum damaged).

Data: West of Lake Yambuk, Victoria, Aust. (38°20'S 142°01'E). Collected by C. Cooper (FWD), 18 August 1990 and presented 22 April 1994.

Remarks: Original number FWD 14709. Total body length 2.1 m.

6. FAMILY PHYSETERIDAE

6.1 *Physeter macrocephalus* LinnaeusSperm Whale

C15960 Juvenile female. Skull.

Data: Gunnamatta Beach, Victoria, Aust. (38°27'S 144°52'E). Stranded 3 February 1972. Collected by J.M. Dixon (NMV), 4 February 1972.

Remarks: One of 37 stranded animals.

C15961 Young female. Skeleton.

Data: Gunnamatta Beach, Victoria, Aust. (38°27'S 144°52'E). Stranded 3 February 1972. Collected by J.M. Dixon (NMV), 4 February 1972.

Remarks: One of 37 stranded animals.

C23585 Teeth (2).

Data: Ross Sea, Antarctica (74°00'S 178°00'E). Collected by the crew of the Norwegian whaling steamship *N.T. Nielsen-Alonso*, 1929. Presented by E.A. McCombe, 13 October 1930.

C24978 Female. Teeth (21).

Data: Gunnamatta Beach, Victoria, Aust. (38°27'S 144°52'E). Stranded 3 February 1972. Collected by R.M. Warneke (FWD), 4 February 1972.

Remarks: Original number FWD 7362. One of 37 stranded animals.

C24979 Female. Teeth (21).

Data: Gunnamatta Beach, Victoria, Aust. (38°27'S 144°52'E). Stranded alive 3 February 1972. Collected by R.M. Warneke (FWD), 4 February 1972.

Remarks: Original number FWD 8034. One of 37 stranded animals.

C24980 Female. Teeth (17).

Data: Gunnamatta Beach, Victoria, Aust. (38°27'S 144°52'E). Stranded alive 3 February 1972. Collected by R.M. Warneke (FWD), 4 February 1972.

Remarks: Original number FWD 8035. One of 37 stranded animals.

C24981 Female. Teeth (25).

Data: Gunnamatta Beach, Victoria, Aust. (38°27'S 144°52'E). Stranded alive 3 February 1972. Collected by R.M. Warneke (FWD), 4 February 1972.

Remarks: Original number FWD 8036. One of 37 stranded animals.

C24982 Male. Teeth (13).

Data: Gunnamatta Beach, Victoria, Aust. (38°27'S 144°52'E). Stranded alive 3 February 1972. Collected by R.M. Warneke (FWD), 4 February 1972.

Remarks: Original number FWD 8037. One of 37 stranded animals.

C24983 Female. Teeth (7).

Data: Gunnamatta Beach, Victoria, Aust. (38°27'S 144°52'E). Stranded alive 3 February 1972. Collected by R.M. Warneke (FWD), 4 February 1972.

Remarks: Original number FWD 8038. One of 37 stranded animals.

C24984 Male. Teeth (11), endoparasites.

Data: 4.8 km south of Loch Sport, Victoria, Aust. (38°04'S 147°35'E). Collected by J.H. Seebeck (FWD), 23 May 1972.

Remarks: Original numbers JS 1053 and FWD 8110.

C25523 Male. Teeth (5).

Data: 100 m west of Cinema Point, near Aireys Inlet, Victoria, Aust. (38°28'S 144°02'E). Stranded 12 September 1982. Collected by L. Huxley (NMV) and B. Hall (NMV) and M. Schulz, 15 September 1982.

Remarks: Total body length 14.4 m.

C26688 Scrimshaw tooth.

Remarks: 12.5 cm long, with 4 mast sailing ship engraving. Purchased from Jade Gallery, Melbourne, July 1985.

C26689 Scrimshaw tooth.

Remarks: 7.5 cm long, with 3 mast sailing ship engraving. Purchased from Jade Gallery, Melbourne, July 1985.

C26690 Scrimshaw tooth.

Remarks: 8.5 cm long, with an engraving of a 2 mast sailing ship on one side, and a ship's wheel on the other. Mounted on marble stand. Purchased from Bruce Rutherford Antiques, Melbourne, July 1985.

C26691 Scrimshaw tooth.

Remarks: 11 cm long, with an engraving of a 3 mast sailing ship on one side, and a single mast sailing boat on the other. Purchased from Bruce Rutherford Antiques, Melbourne, July 1985.

C26692 Scrimshaw tooth.

Remarks: 9 cm long, with "1805 An Officer Royal Marines Full Dress" inscription on one side, and an engraving of an officer on the other. Purchased from Bruce Rutherford Antiques, Melbourne, July 1985.

C26693 Scrimshaw tooth.

Remarks: 11 cm long, with an engraving of two bears on one side, and an old style cannon on the other. Purchased from Bruce Rutherford Antiques, Melbourne, July 1985.

C26694 Scrimshaw tooth.

Remarks: 14.5 cm long, with an engraving of a mermaid on one side, and a head of a seaman on the other. Purchased from Bruce Rutherford Antiques, Melbourne, July 1985.

C26695 Scrimshaw tooth.

Remarks: 12.5 cm long, with an engraving of a bull Elephant Seal (on ice floe) on one side, and a penguin on the other. Purchased from Bruce Rutherford Antiques, Melbourne, July 1985.

C26696 Scrimshaw tooth.

Remarks: 10 cm long, with an engraving of an old style cannon on one side, and two dolphins swimming on the other. Purchased from Bruce Rutherford Antiques, Melbourne, July 1985.

C26697 Scrimshaw tooth.

Remarks: 9.5 cm long, with an engraving of a Sperm Whale on one side, and men in a row boat on the other. Purchased from Bruce Rutherford Antiques, Melbourne, July 1985.

C28407 Caudal vertebra.

Data: 2.2 km SE of Sandy Point, Victoria, Aust. (38°50'S 146°09'E). Collected by G. Challis (NMV), K. Kelly (NMV) and P. Swinkels (NMV), 4 October 1990.

Remarks: Original number W4836. Tentative species identification.

C28697 Teeth (5), caudal vertebra.

Data: Tarwin Lower, Victoria, Aust. (38°42'S 145°52'E). Stranding reported mid-October 1970. Collected by J. Jackson (FWD), 6 November 1970.

Remarks: Original number FWD 5560.

C28816 Tooth.

Data: Shelly Beach, Queensland, Aust. (19°11'S 146°45'E). Collected by S. Callahan, 1982 and presented 25 February 1993.

Remarks: Partly fossilised. Single tooth found on beach.

C28898 Tooth.

Data: Flinders Island, Tasmania, Aust. (40°01'S 148°02'E). Collected by H.J. Walker, 1919.

C28899 Tooth.

Data: Broome, Western Australia, Aust. (17°58'S 122°14'E). Presented by E. Worms c. 1930s.

C28902 Tooth.

Data: Mouth of Betka River, south of Mallacoota, Victoria, Aust. (149°43'S 37°35'E). Collected in 1956.

C29666 Adult male. Mandibular symphysis (including 19 teeth), frozen tissue samples.

Data: Milanesia Beach, Victoria, Aust. (38°45'S 143°18'E). Stranding reported 10 August 1988. Collected by P. Du Guesclin (FWD), 11 August 1988 and presented 21 June 1994.

Remarks: Original numbers 04/223, FWD 14531 and FWD 14755. Total body length 15.7 m. Decomposed carcass.

7. FAMILY ZIPHIIDAE

7.1 *Mesoplodon bowdoini* Andrews Andrews' Beaked Whale

C8442 Adult female. Skeleton.

Data: Mouth of Aire River, near Hordern Vale, Victoria, Aust. (38°47'S 143°28'E). Stranded May 1968. Skull collected by J.M. Dixon (NMV), July 1968. Post-cranial skeleton collected by J.M. Dixon (NMV), December 1968.

Remarks: Original number W2888. Total body length 3.94 m.

Reference: Dixon (1970a).

C23595 Adult male. Rostrum (part).

Data: Hasselborough Bay, Macquarie Island, Tasmania, Aust. (54°29'S 158°57'E). Collected by P.D. Shaughnessy, 5 March 1966 and presented by K.G. Simpson (ADM).

Remarks: Original number ANARE M/66/MC/1. Tentative species identification.

7.2 *Mesoplodon densirostris* (Blainville) Blainville's Beaked Whale

C23596 Rostrum (part).

Data: Hasselborough Bay, Macquarie Island, Tasmania, Aust. (54°29'S 158°57'E). Collected by K.G. Simpson (ADM), 1 September 1965.

Remarks: Original number ANARE M/65/M/2. Length of rostrum 0.61 m.

C29573 Female. Skull.

Data: Near Corringale Beach, Victoria, Aust. (37°48'S 148°30'E). Stranded c. 17 October 1990. Collected by R.M. Warneke (FWD) and presented 22 April 1994.

Remarks: Total body length 4.6 m.

7.3 *Mesoplodon ginkgodens* Nishiwaki and Kamiya Ginkgo-toothed Beaked Whale

C29623 Skull (damaged and lacking mandibles).

Data: Cape Reamur, Victoria, Aust. (38°23'S 142°09'E). Collected by C.E. Silveira (FWD), 26 June 1983 and presented 22 April 1994.

Remarks: Original number FWD 13132. Weathered skull found on beach.

7.4 *Mesoplodon grayi* Haast Gray's Beaked Whale

C23594 Young. Skull (lacking mandibles), caudal vertebra.

Data: Near Cape Schanck, Victoria, Aust. (38°30'S 144°53'E). Skull presented by E. Battersby, 29 June 1931 and two caudal vertebrae, 9 July 1931.

Remarks: Original number R13590. Skeletal remains found on beach. Of the two vertebrae donated, only one can be located.

References: Brazenor (1933), Brazenor (1950), Warneke (1963), Wakefield (1967).

C25500 Female. Skull.

Data: Sealers Cove, Wilsons Promontory, Victoria, Aust. (39°01'S 146°27'E). Stranded c. 29 July 1982. Collected by R.M. Warneke (FWD), 4 August 1982.

Remarks: Original number FWD 12831.

C28906 Juvenile. Skull (fragmented).

Data: The Colonnades, Phillip Island, Victoria, Aust. (38°33'S 145°19'E). Collected 16 January 1991. Presented by FWD, 1 March 1994.

C29731 Adult female. Skull.

Data: Mouth of Edens Creek, Palana Beach, Flinders Island, Tas., Aust. (39°46'S 147°54'E). Collected by R. Thompson (FNCV), 11 November 1993 and presented 9 November 1994.

Remarks: Total body length c. 5.5 m. Decomposed carcass.

7.5 *Mesoplodon layardii* (Gray).....Strap-toothed Whale

C3758 Female. Skull (lacking proximal half of right mandible).

Data: Griffith Island, Victoria, Aust. (38°24'S 142°15'E). Stranded 23 June 1962. Collected by R.M. Warneke (FWD) and F.T. Baum (FWD), 31 July 1962 and presented 29 April 1963.

Remarks: Total body length c. 5.2 m.

References: Warneke (1963), Wakefield (1967), Dixon (1980).

C23446 Adult male. Skull (fragmented).

Data: Approximately 4 km west of Nobles Rocks, Discovery Bay, Victoria, Aust. (38°05'S 141°04'E). Stranded 13 April 1979. Collected by J.M. Dixon (NMV), 21 April 1979.

Remarks: Total body length 5.52 m.

Reference: Dixon (1980).

C29329 Adult female. Skull, right scapula, stomach contents, ovaries.

Data: Breamlea, Victoria, Aust. (38°18'S 144°23'E). Stranded 2 November 1992. Presented by FWD, 22 April 1994.

Remarks: Original number FWD 14985. Total body length 5.8 m.

C29468 Adult female. Skull.

Data: 8 km west of Golden Beach, Victoria, Aust. (38°16'S 147°20'E). Collected by R.M. Warneke (FWD), 22 September 1988 and presented 22 April 1994.

Remarks: Original number FWD 14731. Total body length 5.6 m.

C29574 Adult. Skull (fragmented mandibles).

Data: 11 km NW of Cape Liptrap, Victoria, Aust. (38°49'S 145°53'E). Stranding reported 7 April 1989. Presented by FWD, 6 June 1994.

Remarks: Total body length c. 5.5 m. Decomposed carcass.

7.6 *Mesoplodon mirus* True True's Beaked Whale

C24994 Female. Skull, stomach contents.

Data: East Beach, Port Fairy, Victoria, Aust. (38°22'S 142°16'E). Collected by R.M. Warneke (FWD), 1 March 1980 and presented 13 April 1994.

Remarks: Original number FWD 12186. Total body length 4.7 m.

Reference: Baker (1990).

7.7 *Ziphius cavirostris* G.Cuvier Cuvier's Beaked Whale

C23573 Skull (lacking mandibles).

Data: Douglas Point, 1 km NW of Bauer Bay, Macquarie Island, Tasmania, Aust. (54°32'S 158°53'E). Collected by K.G. Simpson (ADM), 1965.

Remarks: Original number ANARE M/65/M/1.

C24937 Female. Skull.

Data: Entrance to Mallacoota Inlet, Mallacoota, Victoria, Aust. (37°34'S 149°46'E). Collected by R.M. Warneke (FWD) and F.T. Baum (FWD), 9 September 1964 and presented 27 May 1981.

Remarks: Original number FWD 8017.

Reference: Wakefield (1967).

C29470 Adult male. Skull (lacking mandibles), frozen tissue samples.

Data: South coast of Griffith Island, Victoria, Aust. (38°25'S 142°15'E). Stranded 18 February 1994. Collected by R.M. Warneke and A. Troy, 20 February 1994 and presented by FWD, 8 September 1994.

Remarks: Original numbers 94.03, FWD 15060 and W5003. Total body length 6.7 m.

C29671 Juvenile. Mandibles (damaged).

Data: 3 km west of Cape Howe, Victoria, Aust. (37°30'S 149°56'E). Collected by M. Schulz, 25 October 1987. Presented by FWD, 21 June 1994.

Remarks: Total body length 2.97 m.

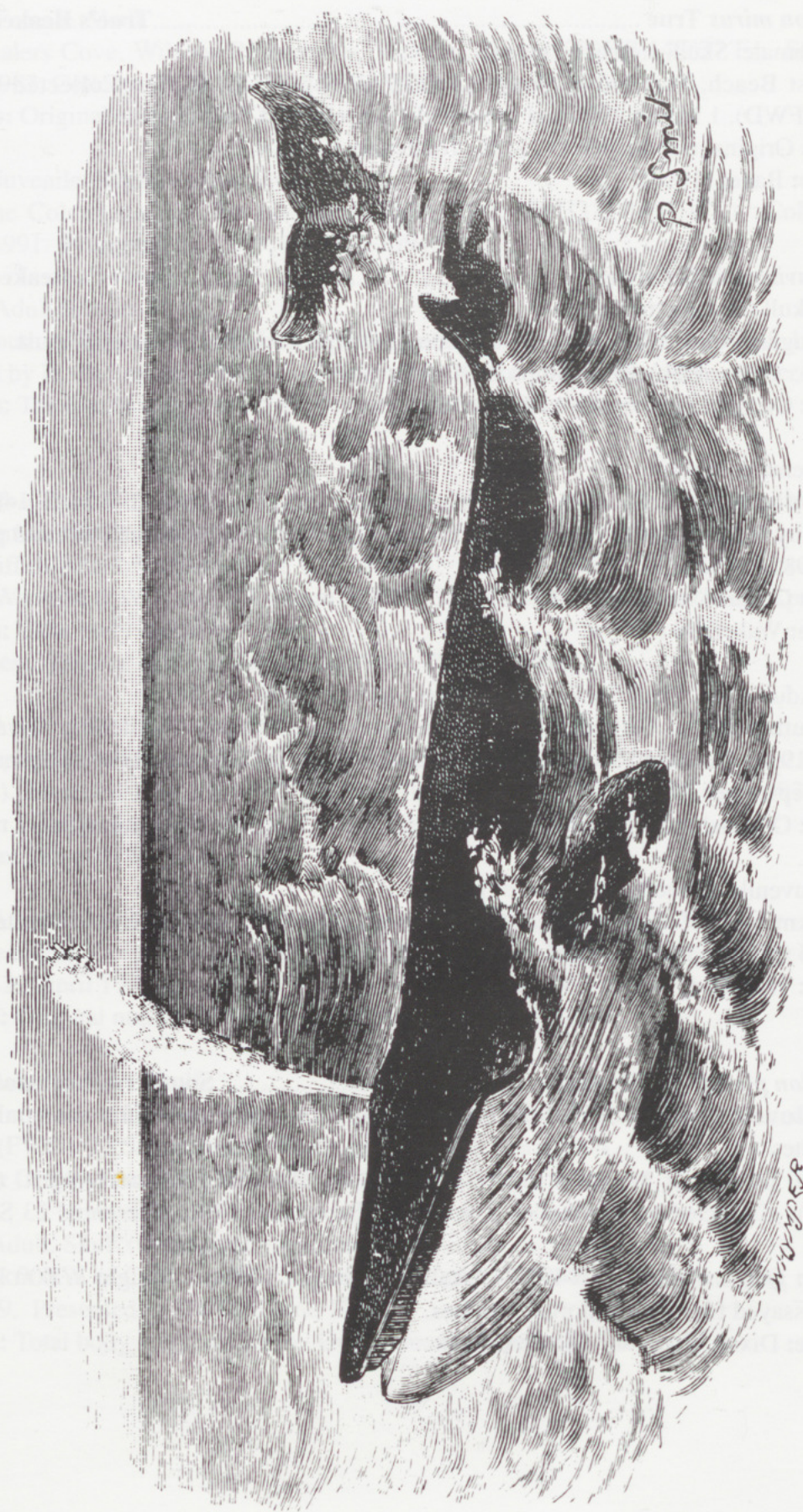
7.8 *Hyperoodon planifrons* Flower Southern Bottlenose Whale

C28757 Juvenile male. Skeleton, blubber, stomach contents, some internal organs, ectoparasites.

Data: 100 m NW of Mentone Life Saving Club, Mentone, Victoria, Aust. (37°59'S 145°04'E). Collected by Mordialloc Council, 22 September 1992. Presented 23 September 1992.

Remarks: Original number W4967. Total body length 3.67 m. Weight c. 600 kg. Calf. Blubber assayed for organochlorine residues.

Reference: Dixon, Frigo and Moyle (1994).



BLUE WHALE – Plate from *The Royal Natural History* 1894-95 by R. Lydekker

SUBORDER MYSTICETI (Baleen Whales)

1. FAMILY BALAENOPTERIDAE

1.1 *Balaenoptera acutorostrata* LacépèdeMinke Whale

C23488 Juvenile female. Skeleton, baleen (complete).

Data: Red Bluff, Lang Lang, Victoria, Aust. (38°19'S 145°31'E). Stranded alive 6 October 1979. Collected by J. Davidson (FWD) and R.M. Warneke (FWD), 9 October 1979.

Remarks: Original numbers RW1169 and W4198. Total body length 3.35 m. Weight c. 310 kg.

C23586 Baleen.

Data: Ross Sea, Antarctica (74°00'S 178°00'E). Collected by the crew of the Norwegian whaling steamship *N.T. Nielsen-Alonso*, 1929. Presented by E.A. McCombe, 13 October 1930.

Remarks: Specimen not located.

C24935 Female. Skull, bones of left pectoral fin, baleen (about 70 plates).

Data: Point Leo, Westernport Bay, Victoria, Aust. (38°25'S 145°04'E). Found dead on rocks, 24 June 1976. Skull and baleen collected by FWD; pectoral fin collected by J.M. Dixon (NMV) and L. Chegwiddden (NMV), 25 June 1976.

Remarks: Original numbers FWD 10833, W4038, W4669. Total body length 4.54 m.

C24936 Juvenile female. Skull.

Data: Reeve Channel, near Lakes Entrance, Victoria, Aust. (37°55'S 147°55'E). Collected by FWD, 3 June 1966.

Remarks: Original number FWD 8053.

C24968 Juvenile male. Skeleton, baleen (complete), model (twice natural size).

Data: Mouth of Spout Creek, near Aireys Inlet, Victoria, Aust. (38°28'S 144°01'E). Stranded alive 14 August 1980. Collected by J.M. Dixon (NMV) and L. Huxley (NMV), 15 August 1980.

Remarks: Original number W4273. Total body length 3.51 m. Weight c. 450 kg.

C28102 Adult. Articulated skeleton.

Data: Norway. Collected 1860.

Remarks: Original number 2882. Total length of skeleton c. 5.5 m.

1.2 *Balaenoptera edeni* AndersonBryde's Whale

C8441 Young male. Skull, atlas, baleen (complete).

Data: Mouth of Limeburners Creek, Corio Bay, Victoria, Aust. (38°04'S 144°24'E). Stranded alive 25 July 1968. Collected by R.N.J. Bickerdike, 29 July 1968.

Remarks: Total body length 6.4 m.

References: Dixon (1970a), Paterson and Van Dyck (1988), Baker (1990).

C28703 Adult. Skull, articulated right pectoral fin.

Data: Beach at Point Impossible, near Torquay, Victoria, Aust. (38°18'S 144°22'E). Stranded 1 January 1985. Collected by L. Huxley (NMV) and P. Swinkels (NMV), 1 January 1985.

Remarks: Total body length c. 14 m. Decomposed carcass - dead c. 1 week prior to stranding.

C28758 Young female. Skull, baleen (almost complete), left scapula, bones of left pectoral fin, blubber, muscle, barnacle.

Data: Chinaman Beach, Wilsons Promontory, Victoria, Aust. (38°47'S 146°26'E). Stranding reported 22 October 1992. Collected by J.M. Dixon (NMV), L. Frigo (NMV) and R.L.C. Moyle (NMV), 23 October 1992.

Remarks: Original number W4968. Total body length 8.0 m. Blubber assayed for organochlorine residues.

1.3 *Balaenoptera musculus* (Linnaeus).....Blue Whale

C23571 Juvenile male. Mandibles, baleen (16 plates), bones of right pectoral fin.

Data: Levys Point, 4 km west of Warrnambool, Victoria, Aust. (38°23'S 142°26'E). Stranded alive 6 April 1976. Collected by L. Huxley (NMV) *et al.*, 9 April 1976.

Remarks: Original number FWD 10790. Total body length 19.1 m.

Reference: Isles (1981).

C23582 Baleen (3 plates).

Data: Ross Sea, Antarctica (74°00'S 178°00'E). Collected by the crew of the Norwegian whaling steamship *N.T. Nielsen-Alonso*, 1929. Presented by E.A. McCombe, 13 October 1930.

Remarks: Specimen not located.

C23584 Left tympanic bulla.

Data: Ross Sea, Antarctica (74°00'S 178°00'E). Collected by the crew of the Norwegian whaling steamship *N.T. Nielsen-Alonso*, 1929. Presented by E.A. McCombe, 13 October 1930.

C23597 Adult. Right tympanic bulla, baleen (4 plates).

Data: Near Jan Juc, Victoria, Aust. (38°21'S 144°18'E). Stranded August 1866. Received early 1867.

Remarks: Original numbers 28104-7. Holotype of *Physalus grayi* McCoy 1867. Total length of skeleton c. 27.5 m. Complete articulated skeleton was displayed outside the National Museum at the University of Melbourne until 1899, when apparently it was destroyed.

References: McCoy (1867), Brazenor (1950), Wakefield (1967), Dixon (1970b).

C28663 Male. Skeleton, baleen (almost complete), blubber, muscle, liver, barnacles.

Data: Beach at Cathedral Rock, 5 km NE of Lorne, Victoria, Aust. (38°33'S 143°58'E). Stranded 5 May 1992. Collected by NMV and FWD, 6 May 1992.

Remarks: Original number W4964. Total body length 18.7 m. Weight c. 40 tonnes. Blubber assayed for organochlorine residues.

Reference: Dixon (1992).

1.4 *Balaenoptera physalus* (Linnaeus)Fin Whale

C28272 Baleen plate.

Data: Nil.

1.5 *Balaenoptera* spp

C23572 Left mandible.

Data: Near mouth of Johanna River, Johanna, Victoria, Aust. (38°44'S 143°21'E). Collected by J.M. Dixon (NMV) and A.J. Coventry (NMV), 15 October 1969.

Remarks: Single bone found in river. Specimen destroyed 1980.

C23575 Thoracic vertebra, ribs (2).

Data: Mouth of Tidal River, Norman Bay, Victoria, Aust. (39°02'S 146°20'E). Collected by J.M. Dixon (NMV), February 1971.

Remarks: Possibly from different individuals.

C23576 Right radius.

Data: No locality data. Presented by W.H. Schmidt, 11 May 1912.

C23578 Posterior section of skull.

Data: Seaspray, Ninety Mile Beach, Victoria, Aust. (38°22'S 147°11'E). Collected by A. Cooper, 19 June 1978. Presented 22 June 1978.

C23923 Left ulna.

Data: East Beach, Port Fairy, Victoria, Aust. (38°22'S 142°16'E). Collected by R. Melick, 6 September 1980 and presented 9 September 1980.

Remarks: Very weathered.

C27802 Female. Right mandible.

Data: McLoughlins Entrance, Yarram, Victoria, Aust. (38°37'S 146°53'E). Stranded c. 10 May 1989. Collected by VIMS, 26 July 1989.

Remarks: Total body length 14-16 m. Decomposed carcass.

C28285 Cervical vertebra.

Data: Metung, Victoria, Aust. (37°53'S 147°51'E). Collected by C.F. Wordsworth and presented 21 March 1991.

C28723 Cervical vertebra.

Data: Approximately 400 m west of entrance, Lakes Entrance, Victoria, Aust. (37°53'S 148°00'E). Collected by Mrs Webster, 17 October 1987 and presented 27 October 1987.

Remarks: Original number W4666. Found buried in sand.

1.6 *Megaptera novaeangliae* (Borowski)Humpback Whale

C23583 Mandible (part).

Data: Ross Sea, Antarctica (74°00'S 178°00'E). Collected by the crew of the Norwegian whaling steamship *N.T. Nielsen-Alonso*, 1929. Presented by E.A. McCombe, 13 October 1930.

C23922 Chevron bone.

Data: Lord Howe Island, New South Wales, Aust. (31°34'S 159°06'E). Collected by J. De Jong, August 1980 and presented 1 September 1980.

Remarks: Tentative species identification. Possibly from a whale that stranded November 1979.

C24956 Immature female. Skull (fragmented), baleen (complete).

Data: Bonbeach, Victoria, Aust. (38°04'S 145°07'E). Stranded 14 December 1980. Collected by J.M. Dixon (NMV) and L. Huxley (NMV) *et al.*, 15 December 1980.

Remarks: Original number W4294. Total body length 6.37 m.

Reference: Dixon (1982).

C24961 Baleen plate.

Data: Cape Woolamai, Phillip Island, Victoria, Aust. (38°34'S 145°22'E). Collected in 1940. Presented by K.C. Norris (FWD).

Remarks: Original number FWD 9209.

C28892 Immature. Rear section of skull (fragmented).

Data: Beach near Arch Rock, Venus Bay, Victoria, Aust. (38°50'S 145°54'E). Collected by T. Burggraaff, 1987. Presented by M. Burggraaff, 10 November 1993.

Remarks: Weathered bone found at low tide on sand bank.

C29136 Juvenile female. Baleen (4 plates).

Data: 400 m north of Browns Rocks, Fraser Island, Queensland, Aust. (24°47'S 153°16'E). Stranded 3 July 1989. Collected by R.A. Paterson (QM) and S.M. Van Dyck (QM).

Remarks: Original number JM7302. Total body length 8.1 m. Yearling. Exchange specimen from S.M. Van Dyck (QM), 31 March 1994.

References: Paterson and Van Dyck (1991), Paterson (1994).

2. FAMILY NEOBALAENIDAE

2.1 *Caperea marginata* (Gray)Pygmy Right Whale

C23581 Baleen plate.

Data: Probably Allestree, Portland Bay, Victoria, Aust. (38°17'S 141°38'E). Collected by B.E. Carthew, c. October 1946. Presented by N.A. Wakefield, 1967.

Reference: Wakefield (1967).

C24962 Female. Baleen plate.

Data: Stanley, Tasmania, Aust. (40°46'S 145°17'E). Collected by E.O.G. Scott (QVM), 9 February 1952. Presented by FWD.

Remarks: Original number FWD 9207. Total body length 5.7 m.

Reference: Davies and Guiler (1957).

C27881 Juvenile male. Skull (damaged right mandible), baleen (complete), bones of right pectoral fin.

Data: Eastern end of Rivernook Beach, 5 km east of Princetown, Victoria, Aust. (38°51'S 143°10'E). Collected by C. Murdoch (FWD) and W. Allen (FWD), 30 December 1989 and presented 3 January 1990.

Remarks: Original number W4804. Total body length 3.27 m.

C28271 Baleen (11 plates).

Data: Nil.

Remarks: Original number ITM 132. Registered by ITM in the early 1890s.

C28531 Juvenile male. Skeleton, baleen (almost complete).

Data: Portland, Victoria, Aust. (38°21'S 141°36'E). Carcass found floating in main harbour, 25 March 1991. Collected by FWD, 25 March 1991 and presented 12 February 1992.

Remarks: Original number 1063/91. Total body length 3.3 m.

C28695 Baleen (2 plates).

Data: Flinders Island, Tasmania, Aust. (40°01'S 148°02'E). Collected by D. Smith (NPS), 1988. Presented by T. Allen (VIMS), 2 July 1992.

C29467 Male. Skull, baleen, left scapula, left humerus, ribs (6), single sternebra, blubber, muscle, some internal organs.

Data: Silverleaves Beach, Phillip Island, Victoria, Aust. (38°27'S 148°15'E). Stranded 2 July 1989. Collected by K. Brown (FWD) and presented 22 September 1993.

Remarks: Original number FWD 14732. Total body length 3.33 m. Weight c. 515 kg.

3. FAMILY BALAENIDAE

3.1 *Eubalaena australis* (Desmoulins) Southern Right Whale

C23598 Baleen plate.

Data: Portland, Victoria, Aust. (38°21'S 141°36'E). Purchased from J.F. Johnstone, November 1861.

Remarks: Original number 11115.

C27879 Nasal septum (part), auditory bullae, ribs (2), left scapula, epiphysis, chevron bone.

Data: Approximately 3 km north of Point Cook, Altona Bay, Victoria, Aust. (37°52'S 144°52'E). Collected by D. Graham, 20 November 1989.

Remarks: Weathered bones exposed by eroding beach sands.

Reference: Dixon (1990).

C28603 Rear section of skull.

Data: 4 km east of mouth of Fitzroy River, Tyrendarra East, Victoria, Aust. (38°15'S 141°54'E). Stranded 5 November 1991. Collected by FWD, 5 November 1991 and presented 18 March 1992.

Remarks: Total body length c. 9.3 m. Decomposed carcass.

C28679 Left tympanic bulla (part).

Data: No locality data. Presented by A.S. Kenyon, 18 June 1920.

C29594 Left humerus.

Data: Portland, Victoria, Aust. (38°21'S 141°36'E). Collected by N. Cryer, c. January 1986 and presented 2 June 1994.

Remarks: Bone located during dredging of harbour.

REFERENCES CITED

- Baker, A.N. 1990. Whales and Dolphins of Australia and New Zealand – an Identification Guide. Allen and Unwin, North Sydney, Australia. 2nd edition.
- Brazenor, C.W. 1933. First record of a beaked whale (*Mesoplodon greyi*) from Victoria. *Proceedings of the Royal Society of Victoria* **45**: 23-24; pl. VI.
- Brazenor, C.W. 1950. The Mammals of Victoria and the Dental Characteristics of Monotremes and Australian Marsupials. National Museum of Victoria, Melbourne, Australia.
- Corbet, G.B. and Hill, J.E. 1991. A World List of Mammalian Species. Natural History Museum Publications, London, U.K. and Oxford University Press, Oxford, U.K. 3rd edition.
- Davies, J.L. and Guiler, E.R. 1957. A note on the Pygmy Right Whale, *Caperea marginata* (Gray). *Proceedings of the Zoological Society of London* **129**: 579-589.
- Dixon, J.M. 1970a. Two new whale records from Victoria. *Mesoplodon bowdoini* Andrews (Ziphiidae) and *Balaenoptera edeni* Anderson (Balaenopteridae). *The Victorian Naturalist* **87**: 88-93.
- Dixon, J.M. 1970b. Catalogue of mammal types (Class Mammalia) in the National Museum of Victoria. *Memoirs of the National Museum of Victoria* **31**: 105-114.
- Dixon, J.M. 1980. A recent stranding of the Strap-toothed Whale, *Mesoplodon layardi* (Gray) (Ziphiidae) from Victoria, and a review of Australian records of the species. *The Victorian Naturalist* **97**: 34-41.
- Dixon, J.M. 1982. The Humpback Whale, *Megaptera novaeangliae*, a first stranding for Port Phillip Bay, Victoria. *The Victorian Naturalist* **99**: 24-27.
- Dixon, J.M. 1984. Hepatitis and bone lesions in a stranded juvenile Common Dolphin, *Delphinus delphis* Linnaeus. *Australian Mammalogy* **7**: 225-228.
- Dixon, J.M. 1989. The first record of *Stenella attenuata* (Gray), the Spotted Dolphin, from Victoria, Australia. *The Victorian Naturalist* **106**: 194-196.
- Dixon, J.M. 1990. A record of a Southern Right Whale (*Eubalaena australis*) skeleton from Altona Bay, Victoria, Australia. *The Victorian Naturalist* **107**: 159-162.
- Dixon, J.M. 1992. Blue Whale stranding. *Australian Natural History* **24**: 8.

-
- Dixon, J.M., Frigo, L. and Moyle, R.L.C. 1994. New information on the Southern Bottlenose Whale, *Hyperoodon planifrons* (Cetacea: Ziphiidae), from a recent stranding in Victoria, Australia. *Australian Mammalogy* **17**: 85-95.
- Fordyce, R.E., Mattlin, R.H. and Dixon, J.M. 1984. Second record of Spectacled Porpoise from subantarctic southwest Pacific. *The Scientific Reports of the Whales Research Institute* **35**: 159-164; pls I and II.
- Isles, A.C. 1981. A Blue Whale *Baelonoptera* [sic] *musculus* stranded near Warrnambool, Victoria. *The Victorian Naturalist* **98**: 52-53.
- Klinowska, M. 1991. Dolphins, Porpoises and Whales of the World. The IUCN Red Data Book. IUCN, Gland, Switzerland and Cambridge, U.K.
- McColl, K.A. and Obendorf, D.L. 1982. Helminth parasites and associated pathology in stranded Fraser's Dolphins, *Lagenodelphis hosei* (Fraser, 1956). *Aquatic Mammals* **9**: 30-34.
- McCoy, F. 1867. On the recent zoology and palaeontology of Victoria. Intercolonial Exhibition Essays, 1866. Melbourne: 3-24.
- Paterson, R.A. 1994. An annotated list of recent additions to the cetacean collection in the Queensland Museum. *Memoirs of the Queensland Museum* **35**: 217-223.
- Paterson, R.A. and Van Dyck, S. 1988. Bryde's Whale in the coastal waters of eastern Australia. *The Scientific Reports of the Whales Research Institute* **39**: 21-29.
- Paterson, R.A. and Van Dyck, S. 1991. Studies of two Humpback Whales, *Megaptera novaeangliae*, stranded at Fraser Island, Queensland. *Memoirs of the Queensland Museum* **30**: 343-350.
- Pescott, R.T.M. 1954. Collections of a Century. National Museum of Victoria, Melbourne, Australia.
- Wakefield, N.A. 1967. Whales and dolphins recorded for Victoria. *The Victorian Naturalist* **84**: 272-281.
- Warneke, R.M. 1963. A record of the beaked whale (*Mesoplodon layardii*) in Victorian waters. *The Victorian Naturalist* **80**: 68-73.

Museum Victoria



65677