

HARVEY "PETTY" ORCHARD DISC STRIPPING PLOW

NO Plowing the Orchard Crosswise to Plow out the Strips!
NO Leaving the Centre Strip Unworked!
NO Strip Digging or Chipping!

Built in Light and Heavy Size for Horse and Tractor Draught



Fig. 1.—2-Furrow Tractor "Petty" Plow in action, plowing out strips in high grass.

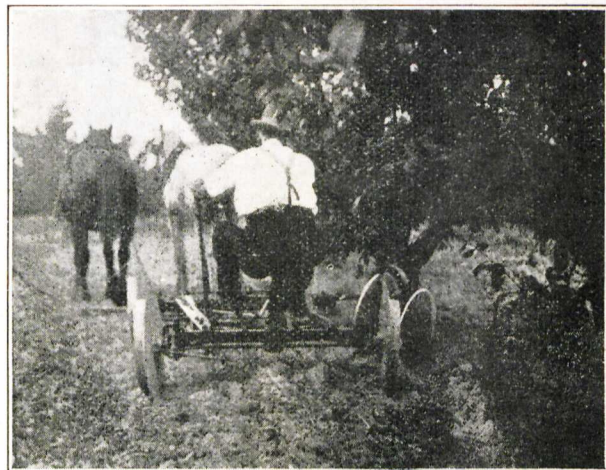


Fig. 2.—2-Furrow Horse-drawn Plow in action, plowing the strip out from and around the tree.

An Australian Invention that Revolutionizes the Work of the Orchardist

DANIEL HARVEY LIMITED

Box Hill, Melbourne, Victoria

MAKE GOOD WORK EASY



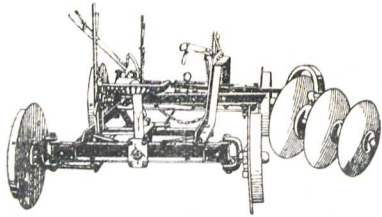


Fig. 3.—Rear view of 3-Furrow "Petty" Plow.

Harvey Petty Orchard Disc Plow

Does the Work in Half the Time and does it Better. Eliminates Hard Work and Energy. Saves You Money!

The "Petty" Orchard Stripping Disc Plow is the work of a lifetime's practice and study of orchard implements by experienced fruit-growers. Many labour-saving devices for orchard cultivation have been developed in Australia and abroad, and it is to the credit of Australia that fruit-growers of this country have now devised a new principle of world-wide importance—one that is meeting with ready acceptance and favour with Australian orchardists.

The "Petty" Orchard Disc Stripping Plow is the greatest labour saver of all time. It eliminates a lot of back-breaking work in cutting out the strips between the trees. The operator is able to ride on the Plow seat, thus sitting down and doing the job in comfort.



Fig. 4.—View of crowd at Demonstration of "Petty" Plow.

EASE OF OPERATION.—The ease and facility with which this Plow can be steered in and out between the trees, giving an even and uniform cut, is a boon to Australian fruit-growers. The horses or tractor continue in a straight line clear of the branches. The depth of the cut is regulated by a lever close to the operator's seat.

Buxton, Vic.

Dear Sir,

I am the owner of an orchard, and I have always had difficulty in plowing near the trees, as my trees are exceptionally low; but now that I have bought a "Petty" Plow I find it a simple matter to do my plowing. This Plow, with a floating arm, will get under the lowest limb, and will plow on or off with the greatest of ease and comfort, and I can highly recommend it to anyone with a large or small orchard.

Yours faithfully,
(Sgd.) ROBERT SCOTT,

PRINCIPLE.—An entirely new principle embodied in the "Petty" Orchard Disc Plow is the frame mounted on four straight disc wheels, which are steerable in unison or separately. The disc wheels have a two-fold use, firstly for transport, and secondly, they act as an anchor to stop any possibility of side draught and keep the Plow rigidly to its work under the most abnormal conditions.

STEERING.—The steering is accomplished by two levers, one attached to the front wheels, and the other to the rear wheels. Each set of front and rear wheels can be steered independently or together, whichever is desired. A supplementary foot lever is also provided for steering.



Fig. 5.—Action picture of "Petty" Plow. Note that the Plow is close to the tree whilst the Tractor is driven out clear of the branches.



Fig. 6.—Orchard completely plowed out with the "Petty" Plow.

Daniel Harvey Ltd.
Box Hill, Melb. Vic.



Harvey Petty Orchard Disc Plow

*A Universal Tool and a Necessity to
Every Orchard*

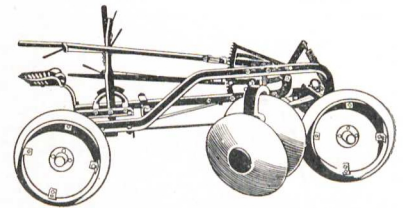


Fig. 7.—Side view of 2-Furrow "Petty" Plow.

FLOATING ARM.—One of the many patent features of the "Petty" Orchard Disc Plow is the mounting of the plowing discs on a floating arm extended beyond the frame. This patent feature is necessary so that the plowing discs will penetrate to an even depth, even though the plow wheels may be on a sideling or riding in uneven ground. In actual operation the Plow discs can be regulated to plow within an inch or two of the trunk of the tree, as can be seen in illustration on Page 1 of this leaflet (Fig. 1, 2 & 6). Immediately on clearing the trunk of the tree a slight movement of the levers provides an inward sweeping motion, straightening up again as the next tree is approached. The soil is thus plowed close to the tree-trunk on the one side, and following the same procedure on the other side, the land is completely cut out between the trees. The Plow can be steered several feet out of straight either way, thereby giving remarkable ease of operation and comfort to the driver.

The "Petty" Orchard Disc Plow can be used as a single furrow, double furrow, or three furrow Plow. The single furrow Plow has one 23in. diameter disc. The double furrow is equipped with one 23in. and one 21½in. disc. The three furrow Plow has one 23in., one 21½in., and one 20in. disc, thus giving natural undercut which is so necessary to efficiency under hard conditions. This undercut is alterable to meet varying conditions with a wedge, and also with a lever which can be adjusted whilst the plow is in motion. This is very advantageous, particularly when plowing on sidelings. It is impossible for the Plow to slip away from its work on sidelings, owing to the fact that the four straight blade wheels are spaced to resist side thrust.



Fig. 8.—Disc Irrigation Furrowing Attachment in action.

IRRIGATION FURROWS.—Wonderful advantages are to be gained from this type of machine. One especially is the opening up of irrigation furrows. The furrows may be zig-zagged in between, out and around each tree, leaving no dry space. Figure 8 shows a "Petty" Plow fitted with disc furrow attachments. Shovel type furrowers may be attached instead of discs.

DISC BEARINGS and all wearing surfaces are deeply chilled and offer the greatest resistance against hard and solid wear. All bearings are dustproof and fitted with grease cups, providing ample lubrication.

Ardmona.

Dear Sir,

I have received all parts for the 3-furrow, for furrowing out for irrigation, affixed to my "Petty" Plow and it is now drawn by my tractor, and is also lifted out of the ground at the headlands from the seat of the tractor, and I am well satisfied with the work the machine is doing.

(Sgd.) P. A. PYKE,

Wallington, via Geelong, Vic.

Dear Sirs,

I have tested your "Petty" Plow under the worst possible conditions, and I wish to state I am more than satisfied with it.

(Sgd.) J. E. BARRY,

tion. Zerke or Alemite nipples may be supplemented at no extra cost when ordering. The frame is strongly braced to provide for the heaviest strains, and built low to facilitate free working under low overhanging branches.

The breast cut and undercut may be quickly and easily altered by a simple adjustment of levers. The front and back wheels are connected with both the foot and hand steering levers, permitting of quick manipulation and perfect control when turning in short headlands, the Plow practically turning in its own radius.

DANIEL HARVEY LIMITED
Box Hill, Melbourne, Victoria



Harvey Petty Orchard Disc Plow

Works just as efficiently on the Hillside or undulating Country as on Flat Land

Built in Light and Heavy Sizes for Horse and Tractor Draught

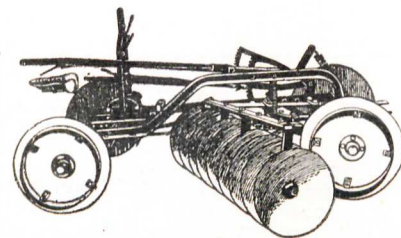


Fig. 9.—Side view of Disc Cultivator attached to "Petty" Plow.



Fig. 10.—2-Furrow Light "Petty" Plow, "plowing on" to trees.

THE ONE-WAY REVERSIBLE DISC CULTIVATOR ATTACHMENT, as shown on Page 4, figs. 9 and 11, are obtainable in sizes from 5-plate 18in. discs for horses, up to 9-plate 18in. discs for tractor draught. With this attachment it is possible to get different breast cut positions, whilst the depth is regulated by the levers, thus levelling of the cutting depth is always under control because the whole disc gang is carried on the chassis of the "Petty" Plow. The discs can be raised out of the ground for turning and transportation.

The gang can be reversed for "cultivating on" and "cultivating off" right up to the butts of the trees, and at the same time the implement can be steered around the butts of trees, thus completely cultivating the whole of the land.

A spring tooth cultivating attachment may be supplemented in place of the disc gang, if required.

Ardmona, Vic.

Dear Sir,

I have completed my plowing, and the "Petty" Plow has been in every way satisfactory. I have finished the two rounds on each row, as you saw it here, in four days. There were thirty acres in that block. While I was plowing the last strip I rang my neighbours to come and see the Plow in action. They were impressed, and so interested, that they are ordering for themselves.

Yours truly,
(Sgd.) F. P. CORNISH,

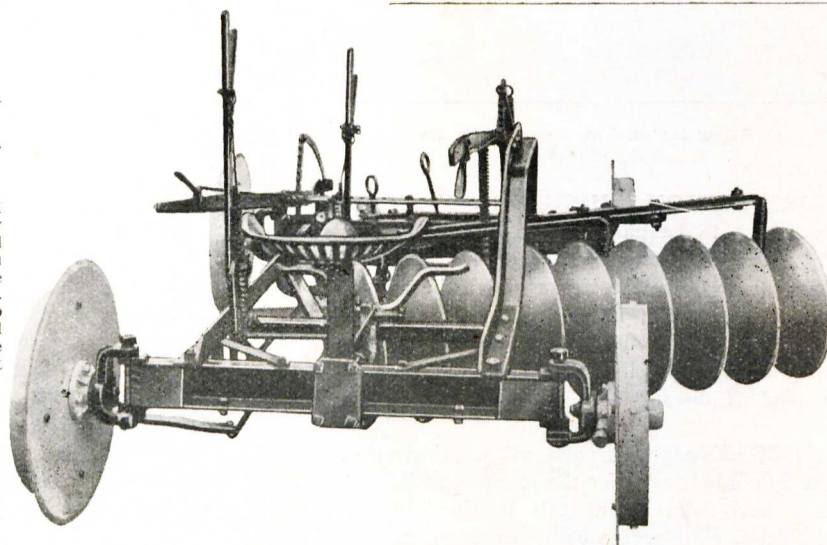


Fig. 11.—Rear view of 9-Plate Disc Cultivating Gang Attachment on "Petty" Plow, set for cultivating on to the trees.

PLOWING ON.—The Plowing Discs are reversible, both for "plowing off" and "plowing on." This Plow offers a definitely great advantage in that plenty of soil can be thrown up to the trees, giving plenty of root cover, enabling the trees to stand up to severe summer conditions, thus enabling "plowing away" to be accomplished without injury to the roots. Figure 10, page 4, shows the Plow "plowing on" to the trees. Another pleasing feature is that the Discs do not choke with weeds. The Plowing Discs can also be set under the frame for plowing in the centres as an ordinary Plow.

Shepparton, Vic.

Dear Mr. Harvey,

We have now had a good test on over 20 acres in our orchard of your new "Petty" 3-Furrow Plow, and its work has exceeded all expectations. I consider it fills a long-felt want, and it is what I have often longed for in doing this class of work on orchard rows. I feel the inventors are to be most deeply congratulated on the production of this fine modern orchard implement, and your firm the same for the efficient and prompt manner in expediting its delivery to orchardists. You were first in the field with modern orchard implements, and you are well upholding your reputation in developing the manufacture of this Plow, which will stand out in a class of its own as the most progressive invention yet made in the interests of orchardists.

With all good and best wishes,

Yours sincerely,
(Sgd.) CHAS. J. NASH,

DANIEL HARVEY LIMITED
Box Hill, Melbourne, Victoria