

Flow
42
H.B.M.
S.S. 571.]

FOR OFFICIAL USE ONLY.

This Document is the property of H.B.M. Government, and the information in it is not to be communicated, either directly or indirectly, to the Press or any person not holding an official position in His Majesty's Service.

RATION PAMPHLET.

**SCALES OF RATIONS, FORAGE, FUEL
AND LIGHT AS AUTHORIZED FOR
THE BRITISH ARMIES IN FRANCE.**

GENERAL HEADQUARTERS.

November XXXX, 1918.

9th,

PRINTED IN FRANCE BY ARMY PRINTING AND STATIONERY SERVICES.



This work is licensed under Creative Commons

<http://creativecommons.org/licenses/by-nc/3.0/au/deed.en>

You may use this work for any Non-Commercial Use with attribution to Museum Victoria and the creator.

TABLE OF CONTENTS.

Section 1.—BRITISH AND DOMINION TROOPS—	PAGE.
(a) Normal Ration	3
(b) Iron Ration	5
(c) Train Ration... ..	5
(d) Voyage Ration (Havre to Southampton) ...	5
(e) Labour on L. of C. and Men of Bakeries employed at their trades	7
(f) Railway Troops, Road Construction Com- panies, and Pioneer Battalions and Com- panies when working on railways	7
(g) British Forestry Companies	7
(h) L. of C. Ration not applicable to	7
(k) Scales of Increase to Normal Ration	9
(l) Equivalents	9
 Section 2.—QUEEN MARY'S ARMY AUXILIARY CORPS ...	11
 Section 3.—BRITISH WEST INDIA REGIMENT	13
 Section 4.—INDIAN PERSONNEL—	
(a) Normal Ration	13
(b) Extras	13
(c) Equivalents	15
(d) Labour awaiting repatriation	15
(e) Iron Ration	15
(f) Train Ration... ..	15
(g) Voyage Ration	15
 Section 5.—ITALIAN LABOURERS	17
 Section 6.—RUSSIAN LABOURERS	17
 Section 7.—CAPE COLOURED PERSONNEL	17
 Section 8.—CHINESE LABOURERS—	
(a) Normal Ration	17
(b) Equivalents	19
(c) Train Ration... ..	19
 Section 9.—PRISONERS OF WAR COMPANIES (GERMAN)—	
(a) Normal Ration	19
(b) Equivalents	21
(c) Train Ration... ..	23
(d) Billeting Straw	23
(e) Fuel	23

TABLE OF CONTENTS—continued.

Section 10.—ISSUES ON REPAYMENT—				PAGE.
(a) French and Belgian Armies	23
(b) Portuguese Troops	23
(c) American Troops attached to British Formations	25
(d) Nursing Sisters	25
Section 11.—FORAGE—				
(a) Normal Ration	25
(b) L. of C. Ration	25
(c) Train Ration	25
(d) Equivalents	27
Section 12.—DOG RATION				27
Section 13.—FUEL AND LIGHT—				
I. (a) Fuel—Summer Period	27
(b) Fuel—Winter Period	27
(c) Laundries and Baths	29
(d) Disinfesting Installations	29
(e) Equivalents	29
(f) Coal on repayment to Officers' and Sisters' Messes	29
(g) Coal on repayment to Y.M.C.A. and Kindred Institutions	31
II. Light	31

SECTION 1.—BRITISH AND DOMINION TROOPS IN ARMY AND CAVALRY CORPS AREAS, G.H.Q., AND ON L. OF C.

	With Armies or Cavalry Corps. (Hereinafter referred to as "Field Ration.")	G.H.Q. and on L. of C. (Hereinafter referred to as "L. of C. Ration").
(a) NORMAL RATION.		
Part "A."		
Frozen Meat	8 ozs.	7 ozs.
Preserved Meat	3 ozs.	1½ ozs.
Bread	12 ozs.	10½ ozs.
* Biscuit	2½ ozs.	2½ ozs.
Pork and Beans (4 days a week)	4 ozs.	—
M. and V. (3 days a week)	½ tin	—
Rice	1 oz.	2 ozs.
Oatmeal	1 oz.	1 oz.
Bacon	3 ozs.	3 ozs.
Butter or Margarine	1 oz.	1 oz.
Cheese	2 ozs.	1 oz.
Fresh Vegetables	8 ozs.	8 ozs.
Jam	3 ozs.	3 ozs.
Sugar (with unsweetened Condensed Milk)	2½ ozs.	1 oz.
or		
Sugar (with sweetened Condensed Milk)	2 ozs.	½ oz.
Milk, Condensed (sweetened or unsweetened)	1 oz.	1 oz.
Part "B."		
Tea	½ oz.	¾ oz.
Salt	¼ oz.	¼ oz.
Pepper	1/100th oz.	1/100th oz.
Mustard	1/100th oz.	1/100th oz.
Pickles (thrice weekly)	1 oz.	1 oz.
Tobacco or Cigarettes (weekly)	2 ozs.	2 ozs.
Matches	3 boxes (fortnightly)	1 box (weekly)

Lime Juice (on recommendation of Medical Officer when Fresh Vegetables are unobtainable. Not more than one issue a week should be made, except in special cases, and then only on the recommendation of an Administrative Medical Officer) ... 1/160th gallon ... 1/160th gallon

Two issues weekly may be made to men employed in Dope Shops, Royal Air Force.

* Bread may be drawn in lieu of biscuits for Patients in Hospitals, and Convalescent Depots.

Rum (at the discretion of the General Officer Commanding, on the recommendation of the Medical Officer. Issues may be made concurrently with any extras authorized under Section 1 (k), but must be restricted to bona fide rum drinkers) ... 1/100th gallon ... —

Rum will be issued to Armies at the rate of 300 gallons per Division, per week, and to Cavalry Divisions at the rate of 100 gallons per Division, per week, for Divisions and Cavalry Divisions other than those resting in back areas, and will be allotted to Formations and Units in accordance with the instructions of the Army Commanders, or, in the case of Cavalry Divisions administered by Cavalry Corps, in accordance with the instructions of G.O.C., Cavalry Corps.

NOTE :—

In lieu of Frozen and Preserved Meat, one day a week, when available, applicable to "L. of C. Ration" only :—

Fish, Fresh or Frozen	12	ozs.
or					
Fish (dried)	8	ozs.
Flour or Rice	1	oz.
Margarine	$\frac{1}{2}$	oz.

(b) IRON RATION.

Preserved meat	12	ozs.
Biscuit	1	lb.
Tea	$\frac{1}{2}$	oz.
Sugar	2	ozs.

(c) TRAIN RATION.

Preserved Meat	9	ozs.
Bread	18	ozs.
or					
Biscuit	12	ozs.
Sugar (with unsweetened Condensed Milk)	2	ozs.
or					
Sugar (with sweetened Condensed Milk)	$1\frac{1}{2}$	ozs.
Milk, Condensed (sweetened or unsweetened)	1	oz.
Cheese	2	ozs.
Jam	3	ozs.
Tea	$\frac{1}{2}$	oz.

(d) VOYAGE RATION. (HAVRE TO SOUTHAMPTON.)

Biscuit	16	ozs.
Preserved meat	12	ozs.
Tea	$\frac{5}{8}$	oz.
Sugar	3	ozs.
Condensed milk	$\frac{3}{4}$	oz.
Jam	3	ozs.
Cheese	2	ozs.

(e) LABOUR ON L. OF C. AND MEN OF BAKERIES EMPLOYED AT THEIR TRADES.

(i.) Draw L. of C. Ration plus:—

Margarine	$\frac{1}{2}$ oz.
Cheese	$\frac{1}{2}$ oz.
Bread	3 ozs.

(ii.) and, in addition, when working over 8 hours a day:—

Bread	4 ozs.
{	Tea	$\frac{1}{8}$ oz.
	and	
	Sugar	$\frac{3}{4}$ oz.
{	or	
	Oxo cubes	One

(iii.) 2 ozs. Oatmeal daily may be drawn by all men employed in holds of ships discharging bulk oats.

The definition of the term "Labour" is left to the discretion of the G.O.C., L. of C. Area, who will review at stated times all authorities given by him under (i.) above.

(f) RAILWAY TROOPS, ROAD CONSTRUCTION COMPANIES, AND PIONEER BATTALIONS AND COMPANIES WHEN WORKING ON RAILWAYS, TO INCLUDE BROAD GAUGE, 60 CM. AND LIGHT RAILWAYS.

will draw, wherever situated, Field Ration plus, for men working over 8 hours, 1/10th of Part "A" thereof.

(g) BRITISH FORESTRY COMPANIES.

will draw, wherever situated, Field Ration plus 1/5th of Part "A" thereof.

(h) THE L. OF C. RATION DOES NOT APPLY TO:—

Drafts for Formations in front of railheads
Troops, including White Labour in Independent Air Force Area
Training schools (Army or L. of C.)
Convalescent depots situated in the L. of C. Area.
Field formations situated temporarily in G.H.Q. or L. of C. Areas.
Tank Corps.
I.W.T. Coastal Services.
Personnel of Messenger Dog Service, Central Kennels.

Who will draw the Field Ration.

(k) SCALES OF INCREASE TO NORMAL RATION.

(i.)	Tea	$\frac{1}{3}$ oz.
	Sugar	$\frac{3}{4}$ oz.
(ii.)	Pea Soup	2 ozs.
	or						
	Oxo Cubes	Two.
	or						
	Cocoa and Milk	1/5th tin.
	or						
	Tea	$\frac{1}{8}$ oz.
	and						
	Sugar	$\frac{3}{4}$ oz.

Men in trenches and men of R.H.A., R.F.A. or R.G.A. when in action may draw daily Scale of Increase (i.).

Increases to be pooled under Army Commanders.

Army Commanders may draw Scale of Increase (ii.) daily as under:—

- (a) During summer months for 3% of total Army feeding strengths.
 (b) During winter months for 15% of total Army feeding strengths.

This pool is intended to cover extra issues previously sanctioned during severe weather and active operations, and will include all issues to labour units working in Army Areas. No demands for further extras will be considered, and the distribution of the pool is left to the discretion of Army Commanders.

(l) EQUIVALENTS.

Frozen meat	1 lb.	= Preserved meat	...	12 ozs.
		= M. and V. rations	...	1 tin.
		= Pork and beans	...	2 lbs.
		= Baked beans and tomatoes	...	2 lbs.
		= Rabbits (including allowance for skins)	...	1 1/9 lbs.
		= Sausages	...	1 lb.
		= Frozen sausage meat	...	1 lb.
		= Sardines or small fish	...	$\frac{3}{4}$ lb.
		= Tinned herrings	...	1 1/2 lbs.
		= Tinned herrings in tomatoes	...	1 1/2 lbs.
		= Veal loaf	...	$\frac{3}{4}$ lb.
*Bread	1 lb.	= Biscuit
		= Flour
		= Rice
		= Oatmeal
		= Rolled oats
Bacon	3 ozs.	= M. and V. Rations	...	$\frac{1}{3}$ tin.
		= Sausage	...	6 ozs.
		= Butter or margarine	...	3 ozs.
		= Veal loaf	...	6 ozs.
Jam	1 oz.	= Dried fruits	...	1 oz.
		= Syrup	...	1 oz.
		= Honey	...	$\frac{1}{2}$ oz.

* Extra Flour, Rice, or Oatmeal is only issuable against Bread portion of Ration. No Flour or Oatmeal is to be issued in lieu of Rice, except in the case of the L. of C. Ration, when Flour 1 oz. may be drawn in lieu of one of the 2 ozs. of Rice. For Convalescent Depots $\frac{1}{2}$ oz. Flour may be drawn in lieu of $\frac{1}{2}$ oz. Rice.

Fresh vegetables	8 ozs.	= Dried vegetables	... 2 ozs.
		= Dried fruits	... 2 ozs.
		= Oranges	... six.
Potatoes	2 ozs.	= Chestnuts (fresh)	... 1 oz.
		= Chestnuts (dried)	... $\frac{2}{3}$ oz.
		= Granulated potatoes	... $\frac{1}{2}$ oz.
Tea, authorized ration		= Coffee (when authorized)	... 1 oz.
Condensed milk (unsweetened)	1 oz.	= Dried milk	... $2\frac{1}{5}$ oz.
Cheese	1 oz.	= Veal loaf	... 1 oz.
Pickles	1 oz.	= Sauce ... (fluid)	... $\frac{1}{3}$ oz.
		= Chutney	... 1 oz.

NOTE:—

Sausages.—Issues limited to twice weekly.

Oranges.—Issues limited to one orange per man daily.

SECTION 2.—Q.M.A.A.C. PERSONNEL.

(a) NORMAL RATION:—

Meat (fresh or frozen)	8 ozs.
Bread	11 ozs.
{ Rice	2 ozs.
{ or	
Oatmeal	2 ozs.
Bacon	1 oz.
Margarine	1 oz.
Cheese	4 ozs.
Fresh vegetables	8 ozs.
Potatoes	3 ozs.
Jam	$1\frac{1}{2}$ ozs.
{ Sugar (with sweetened condensed milk)	
{ or	
Sugar (with unsweetened condensed milk)	2 ozs.
Milk, condensed (sweetened or unsweetened)	2 ozs.
{ Tea	$\frac{1}{2}$ oz.
{ or	
Coffee	1 oz.
{ or	
Cocoa	1 oz.
Salt	$\frac{1}{4}$ oz.
Pepper	$1/100$ oz.
Mustard	$1/100$ oz.
Pickles (3 days a week)	$\frac{1}{2}$ oz.

NOTE:—

(i.) 1 oz. condensed milk may be drawn in lieu of 1 oz. cheese.

(ii.) Women of Q.M.A.A.C., when working on night duty as signallers, bakers, mechanics, etc., for four hours and over between the hours of 9 p.m. and 6 a.m., may draw:—

Bread	3 ozs.
{ Oxo cube	One
{ or	
Cocoa and milk	$1/5$ th tin.

(iii.) Equivalents as in Section 1 (l).

SECTION 3.—BRITISH WEST INDIA REGIMENT.

Will draw Field or L. of C. Ration (Section 1 (a)) according to the area in which situated.

2 ozs. rice may be drawn in lieu of 3 ozs. frozen meat.

3 ozs. rice may be drawn in lieu of 3 ozs. bacon when required.

SECTION 4.—INDIAN PERSONNEL (INCLUDING INDIAN LABOUR).

(a) NORMAL RATION :—

Atta	20	ozs.
Fresh meat	4	ozs.
Dhal	2	ozs.
Dried vegetables	2	ozs.
or						
Fresh vegetables	8	ozs.
Ghi	1½	ozs.
Nut oil	1	oz.

(The nut oil can be used for cooking purposes.)

Sugar (with unsweetened condensed milk)	2	ozs.
or					
Sugar (with sweetened condensed milk)	1½	ozs.
Milk (sweetened or unsweetened)	1	oz.
Tea	½	oz.
Mixed spices, composed of ginger, turmeric, chillies and garlic	½	oz.
Jam (once a week)	2	ozs.
Salt	½	oz.
Pickles (once a week)	½	oz.
Tobacco or cigarettes (per week for smokers)	2	ozs.
Matches, three times a fortnight at the front; once a week on L. of C.	1	box.

Lime Juice (on recommendation of Medical Officer when Fresh Vegetables are unobtainable. Not more than one issue a week should be made, except in special cases, and then only on the recommendation of an Administrative Medical Officer) ... 1/160 gall.

Rum (when authorized, as in Section 1 (a) for British Troops) 1/100 gall.

Indian Treacle may, when available, be issued medicinally on the recommendation of the Medical Officer to all Indian Labour Personnel.

EXTRAS.

(b) EXTRAS.

For men in the trenches:—

Condensed Milk (unsweetened) ... 2 ozs.

For men with Pioneer Battalions:—

Condensed Milk (unsweetened) ... 1 oz.

For Indian Labour engaged on lumbering work:—

Meat ... 4 ozs.

The following may be issued on the authority of the General Officer Commanding on the recommendation of the Medical Officer:—

Tea	⅓	oz.
Sugar (if unsweetened Condensed Milk is issued)	½	oz.
Condensed Milk	¼	oz.

(c) EQUIVALENTS.

Atta	1 oz.	=	Bread, $1\frac{1}{2}$ ozs.
				=	Biscuit, 1 oz.
				=	Rice, 1 oz.
Fresh Meat	4 ozs.	=	Gur or sugar, 3 ozs. or
				=	Condensed Milk (un-
				=	sweetened) 6 ozs. or
				=	Condensed Milk
				=	(sweetened) 3 ozs.
Dhal	1 oz.	=	Peas 1 oz. or Beans 1 oz. or
				=	Pulse 1 oz. or Dried Fruit
				=	1 oz.
Ghi	1 oz.	=	Butter 1 oz.
Gur	1 oz.	=	Sugar 1 oz.
Mixed Spices	$\frac{1}{2}$ oz.	=	Mustard $\frac{1}{25}$ th oz.
				=	Pepper $\frac{1}{18}$ th oz.
					(only to be issued when
					spices not available).

(d) Indian Labour Companies awaiting repatriation at Marseilles will be issued daily with 2 ozs. instead of 4 ozs. Meat.

(e) IRON RATION.

Biscuit	$1\frac{1}{2}$ lbs.
Gur or Sugar	8 ozs.
Tea	1 oz.
Condensed Milk (unsweetened)	6 ozs.
or					
Dried Milk (when available)	$2\frac{1}{2}$ ozs.

(f) TRAIN RATION.

Biscuit	$1\frac{1}{4}$ lbs.
Dried Fruits	2 ozs.
Tea	$\frac{1}{3}$ oz.
Gur or Sugar	3 ozs.
Condensed Milk (unsweetened)	6 ozs.

(g) VOYAGE RATIONS.

Cooking ration.

Atta	20 ozs.
Rice	4 ozs.
Onions	4 ozs.
Ghi	2 ozs.
Gur or Sugar	3 ozs.
Salt	$\frac{1}{4}$ oz.
Tea	$\frac{1}{3}$ oz.
Condensed Milk (unsweetened)	1 oz.
Spices	$\frac{1}{2}$ oz.
Dhal	2 ozs.
Dried Vegetables	$1\frac{1}{2}$ ozs.

Non-cooking Ration.

Onions	2	ozs.
Ghi	3	ozs.
Gur or Sugar	6	ozs.
Salt	$\frac{1}{4}$	oz.
Condensed Milk (unsweetened)	1	oz.
Garlic	$\frac{1}{16}$	oz.
Tamarind	2	ozs.
Powa	16	ozs.
Parched Gram	12	ozs.

One day non-cooking ration issued for every four days cooking ration.

SECTION 5.—ITALIAN LABOURERS.

(a) NORMAL RATION.

Frozen Meat	8	ozs.
Bread	24	ozs.
Rice or Macaroni	3	ozs.
Butter, Oil or Margarine	1	oz.
Cheese	2	ozs.
Fresh Vegetables	8	ozs.
or						
Dried Vegetables	2	ozs.
Jam	3	ozs.
Sugar (with unsweetened Condensed Milk)	1	oz.
or						
Sugar (with sweetened Condensed Milk)	$\frac{1}{2}$	oz.
Milk, Condensed (sweetened or unsweetened)	1	oz.
Coffee	2	ozs.
Haricot Beans	$\frac{1}{2}$	oz.
Salt	1/100	oz.
Pepper	$\frac{1}{4}$	litre.
Wine (Red Vin-Ordinaire)	2	ozs.
Tobacco or Cigarettes (per week for smokers)	3	boxes.
Matches (per fortnight)		

SECTION 6.—RUSSIAN LABOURERS.

Will draw Field or L. of C. ration (Section 1 (a)) according to the area in which situated.

6 ozs. bread may be drawn in lieu of 3 ozs. bacon when required.

SECTION 7.—CAPE COLOURED PERSONNEL.

Will draw Field or L. of C. ration (Section 1 (a)) according to the area in which situated, with the following additional equivalents:—

Bread 4 ozs. or mealie meal 2 ozs. may be drawn in lieu of bacon 2 ozs.
Coffee 1 oz. may be issued in lieu of the tea ration.

SECTION 8.—CHINESE LABOURERS.

(a) NORMAL RATION.

Meat (Fresh or Frozen)	4	ozs.
Bread	8	ozs.
Rice	10	ozs.

Flour	8 ozs.
Vegetables (Fresh)	8 ozs.
Sugar	1 oz.
Bacon	2 ozs.
Nut Oil	1½ ozs.
Cheese	1 oz.
or	
Rice	2½ ozs.
Tea	¼ oz.
Salt	¼ oz.
Tobacco or	2 ozs.
Cigarettes	once a week	
Matches	once a week	1 box.

(b) EQUIVALENTS.

1 oz. Flour = 1 oz. Mealie Meal } Not more than 4 ozs. Flour to be
or 1 oz. Barley Meal } replaced by any Meal.
or 1 oz. Oatmeal }

2 ozs. Bacon = 8 ozs. dressed Frozen Fish (when available).

(c) TRAIN RATION.

Preserved Meat	5 ozs.
Biscuits	1¼ lbs.
Dried Fruits	2 ozs.
Sugar	1 oz.
Margarine	1 oz.
Cheese	1 oz.
Tea	¼ oz.

SECTION 9.—PRISONERS OF WAR COMPANIES (GERMAN).

(Ration Indents to be endorsed "Prisoners of War").

(a) NORMAL RATION (MANUAL LABOUR).

Daily :—

Bread	9 ozs.
Biscuit	4 ozs.
Meat (beef or horse-flesh) (3 days a week)	4 ozs.
Salt-cured, Smoked or Pickled Herrings (2 days a week)	10 ozs.
Bacon (Chinese) (2 days a week)	1/10 lb.
Tea	¼ oz.
or	
Coffee	½ oz.
Sugar	1 oz.
Salt	¼ oz.
Potatoes	20 ozs.
Other Fresh Vegetables	4 ozs.
Split Peas or Beans	2 ozs.
Rice	1½ ozs.
Oatmeal	1 oz.
Cheese	½ oz.
Pepper	1/100th oz.
Maize Meal	½ oz.
Margarine	½ oz.

Weekly :—

{ Salt-cured, Smoked or Pickled Herrings	8	ozs.
{ Oatmeal	2	ozs.
or				
{ Salt-cured, Smoked or Pickled Herrings	4	ozs.
{ Oatmeal	2	ozs.
{ Biscuit	2½	ozs.

*Note :—*Whole Biscuit will not be issued if broken biscuit is available.

Deductions from (a).

When men are not employed on work, the following items of the daily ration will be deducted unless the Medical Officer advises to the contrary in any particular case :—

Bread	4	ozs.
Cheese	½	oz.
Oatmeal or Rice	1	oz.
Maize Meal	½	oz.
Margarine	¼	oz.

Additions to (a).

Where it is considered desirable by the Officer Commanding Company in view of the increased labour output which would be derived therefrom, the daily ration may be increased by 2 ozs. of Edible Fat.

Prisoners of War employed on heavy manual work as, for example, gravel quarrying, agriculture, land reclamation, timber work, concrete slab making, building construction, or other equally strenuous work of a physical nature considered as such by the Medical Officer, will be issued with a ration of 2 ozs. Bacon (Chinese) daily, in lieu of the ration of Bacon (Chinese) laid down in (a), viz. : 1 3/5th ozs. (2 days a week).

(b) EQUIVALENTS.

The rate of Equivalents *which may be issued only when components of the normal ration are not available*, is as follows :—

Bread	1 oz.	=	Biscuit	$\frac{2}{3}$	ozs.
Meat (beef or horseflesh)	-	4 ozs.		=	Preserved Meat	3	ozs.
				=	Salt cured, Smoked or Pickled Herrings	...	10	ozs.	
Potatoes	4 ozs.	=	Rice or Oatmeal	...	1	oz.	
Split Peas or Beans			2 ozs.	=	Biscuit	}	...	1	oz.
				or Rice					
				or Oatmeal					
				or Maize Meal					
				and					
				Bacon (Chinese)	}	...	$\frac{1}{2}$	oz.	
				or Margarine					
				or Edible Fat					
Rice	1 oz.	=	Biscuit	1	oz.
				=	Oatmeal	1	oz.
Margarine	1 oz.	=	Edible Fat	1	oz.

(c) TRAIN RATION.

Biscuit	12	ozs.
Preserved Meat	4 $\frac{1}{2}$	ozs.
Tea	$\frac{1}{2}$	oz.
or						
Coffee	$\frac{3}{4}$	oz.
Sugar	1	oz.
Margarine	1	oz.
Cheese	1	oz.

(d) BILLETING STRAW.

Where considered necessary, the issue of straw at the weekly rate of 4 lbs. per man is authorized during summer and winter.

(e) FUEL RATION.

As at Section 13.

SECTION 10.—ISSUES ON REPAYMENT.

(a) FRENCH AND BELGIAN ARMIES.

Units or individuals attached to units of the British Armies in France.

Normal Ration :—

Field Ration or L. of C. Ration (Section 1 (a)), according to the area in which situated, with the exception that Coffee 1 oz. may be issued in lieu of the Tea ration.

Note :—

- (i.) Issues to Liaison Officers with their personnel and horses, Interpreters and Gendarmes, attached to Units of the British Armies in France, will be free.
- (ii.) 20 ozs. Bread, when available, will be issued to French Units whether in the Field or on the L. of C. instead of the ordinary ration of Bread, Biscuit, Rice and Oatmeal.

(b) PORTUGUESE TROOPS.

(i.) *Normal Ration* :—

Field Ration or L. of C. Ration (Section 1 (a)), according to the area in which situated, with the following exceptions :—

- (a) Coffee 20 grammes (supplied by the Portuguese Government) will be issued in lieu of Tea ration; if Coffee is issued from British stocks 1 oz. will be the ration and the total amount issued must be noted on the indent.
- (b) An additional $\frac{1}{4}$ oz. Salt will be issued on four days a week.
- (c) Mustard will not be issued.

(ii.) *Extras* :—

Wine, $\frac{1}{2}$ litre per man daily (supplied by the Portuguese Government).

(iii.) *Equivalents* :—

8 ozs. dressed Frozen Fish may be issued, when available, in lieu of 2 ozs. Bacon.

(c) AMERICAN TROOPS ATTACHED TO BRITISH FORMATIONS.

will draw Field or L. of C. Ration according to area in which situated with the following exceptions:—

(i.) No Rum will be issued.

(ii.) 1 oz. Coffee will be issued in lieu of Tea Ration.

(iii.) In Army Areas:—

An additional 6 ozs. Potatoes will be issued daily and 1 oz. Beans, when available, may be drawn in lieu of 1 oz. Rice, four days a week.

(d) NURSING SISTERS.

will draw Field or L. of C. Ration (Section 1 (a)), according to the area in which situated, with the exception of Tobacco.

SECTION 11.—FORAGE.

	Oats. lbs.	Hay and Straw. lbs.
--	---------------	---------------------------

(a) (i.) NORMAL RATION:—

Horses, heavy draught, classified as such by Director of Remounts ...	15	13
Other horses, 15 hands and over, and draught mules ...	10	10
Horses under 15 hands and pack mules ...	8	9

1 oz. Coarse Salt per animal daily, if available.

In Column "Hay and Straw" *see* above:—

The poundage of Hay and Straw issuable by classes against this entitlement will be laid down from time to time, by the Director of Supplies, according to the supply situation. Any short issues will be made up by equivalents.

(ii.) In addition to the normal ration Supplements equivalent to 3 lbs. of Hay per animal (*vide d*) may be issued according to the direction of the Director of Supplies when the supply situation permits.

The term "Supplements" covers all forage commodities other than Oats, Maize, Barley, Hay and Straw: these latter may not be issued as supplements.

(b) Animals belonging to L. of C. Units will draw as under (a) (i.) and (ii.)—*see* above—less 1 lb. of Oats for each class of animal. Animals in Remount Depots and debilitated animals in Veterinary Hospitals and Convalescent Horse Depôts will, however, draw full Oats.

(c) TRAIN RATION FOR HORSES.

$\frac{1}{2}$ Ration Oats.

$1\frac{1}{4}$ Ration Hay.

The normal ration should be issued for last day if it is expected that the horses will have detrained before this ration is consumed.

(d) EQUIVALENTS.

Hay or Straw 1 lb. } or Oats, Maize or } Barley, $\frac{1}{2}$ lb. }	= {	Bran	...	9/16th lbs.	{ Issued on Veterinary Certificate.
		Malt	...	3/16th lbs.	
		Linseed	...	1/6th lbs.	
		Linseed Cake	{ or }	...	1/3rd lbs.
		Oil Cake			
		Locust Beans	...	3/4th lbs.	{ Not issuable against Oats, Maize or Barley.
		Horse Carrots	...	2 kilos.	
		Turnips	...	2 "	
		Rutabages	...	2 "	
		Beetroot	...	2 "	
		Green Forage	...	1 $\frac{1}{2}$ "	
		Brewers Grain	...	1 $\frac{1}{2}$ "	

SECTION 12.—DOG RATION.

Horse Meat	...	8	ozs.
Broken Bread or Biscuit	...	12	ozs.
Maize Meal (twice weekly in lieu of $\frac{3}{4}$ lb. Bread or Biscuit)	...	8	ozs.

NOTE:—

The ration for Bloodhounds will be double that of Messenger Dogs.

SECTION 13.—FUEL AND LIGHT.

I—FUEL.

(a) *Summer Period (April to September inclusive).—For Troops at the Front and G.H.Q.*

Coal 10 $\frac{1}{2}$ lbs., or Fuel Wood 21 lbs., weekly for each Officer or soldier.

Coal and Wood, at the equivalent of 1 lb. Coal to 2 lbs. Wood, may be issued, interchangeable at the discretion of the Army Commanders, subject to the proportion demanded being available.

In the event of exceptionally cold weather occurring after 31st March, application may be made by Army Commanders for special temporary issues of Fuel, either for the trenches or for troops in billets, etc.

For Lines of Communication.

The G.O.C., L. of C. Area, will lay down such scales as he may consider necessary, provided the rates do not exceed the rate for troops at the Front.

In the event of exceptionally cold weather occurring after 31st March, the G.O.C., L. of C. Area, will authorize such issues as he may consider necessary, provided stocks are available.

(b) *Winter Period (October to March inclusive).—For Troops at the Front and G.H.Q.*

(i.) Fuel for cooking, warming buildings occupied as billets, washing, etc., is authorized at the scale of 4 lbs. per man daily, and will be made up as follows:—

- (1) For men not in the trenches:— 2 $\frac{1}{2}$ lbs. wood and 1 $\frac{1}{2}$ lbs. coal.
- (2) For men in the trenches:— 2 lbs. coke and $\frac{1}{2}$ lb. charcoal.

The balance of the 4 lbs. allowance of Fuel under (2) which is equivalent to 1 lb. of Wood, or $\frac{1}{2}$ lb. Coal, may be added to the quantities drawn under (1), and used in rear of the trenches. Coke and charcoal are to be demanded on the above-mentioned scale for men in the trenches only.

(ii.) Fuel for offices which are stationary is authorized at the scale of 200 lbs. of Coal per fireplace weekly.

Where, owing to movements, it is necessary to draw the allowance daily, this will be on a scale of 30 lbs. per fireplace a day.

During severe weather 25% increase will be allowed for offices on application to the Quartermaster General.

A certificate as to the number of fireplaces for which fuel is demanded will be given on the requisition for fuel, but issues are not to be made to more than 200 fireplaces in a Division without authorization of Army Commander.

For Lines of Communication.

Issues of Fuel will be governed as far as possible by Para. 247, Allowance Regulations, 1914.

The G.O.C., L. of C. Area, will issue such detailed instructions as may be necessary.

(c) LAUNDRIES AND BATHS.

Coal may be issued for laundries and baths on a scale not exceeding five tons per week to Army and Corps Troops and Divisions, where central baths and laundries are established.

(d) DISINFESTING INSTALLATIONS.

Fuel for disinfesting installations established in Army Areas and on the Lines of Communication may be drawn at the maximum rate of 250 lbs. of Coke per installation per diem.

(e) EQUIVALENTS.

1 lb. Coal or Coke = 2 lbs. Wood or Charcoal.

N.B.—Coal, Coke or Charcoal are only to be issued in lieu of the wood ration when authorized.

1 gallon Paraffin Oil for cooking purposes = 50 lbs. Coal or 100 lbs. Wood.

(f) ISSUES OF COAL TO OFFICERS' AND SISTERS' MESSES ON PAYMENT BY COUPON.

Officers' and Sisters' messes may supplement the authorized ration of Coal, whether free or on repayment, by purchase up to the following scale:—

Numbers in Mess.	Total in excess of authorized ration admissible per head daily on repayment.
5 to 10 inclusive	6 $\frac{1}{2}$ lbs.
For every additional member over 10 and up to 20 inclusive	5 $\frac{1}{2}$ lbs.
For every additional member over 20	3 $\frac{1}{2}$ lbs.

A mess will be considered constituted if five or more officers regularly draw rations from a Supply Officer on one indent, or allowance in lieu of rations, although, from lack of accommodation, etc., they may not actually be located under the same roof.

The price payable for Coal will be 90 francs per ton inclusive of all charges. Sheets of coupons will be obtainable on payment from all Field Cashiers, and all coupons which shew that bearer is entitled to draw 1 cwt. of coal for 3 francs must be altered to 2/3rd cwt., and not more than this amount will be drawn on each of these coupons.

All demands must be represented by an integral number of Coupons. When, however, the entitlement is represented by a number of Coupons and a fraction, Coal to the value of a full Coupon may be drawn for the fraction, if it exceeds in amount 1/3rd of a cwt. In other circumstances, the right to the fraction lapses and may not be carried forward to the next demand.

Indents on A.B.55 will be filled in and marked "Coal for Messes," and a certificate will be given on the indent by the Officer signing that the demand is according to entitlement, and for the sole use of the mess. On the L. of C., Officers' Messes will indent not more than three times a month, and in the Army and Cavalry Corps Areas not more than five times a month for their requirements.

In addition, Coal may be drawn on repayment by Officers' and Sisters' Messes up to 200 lbs. per fireplace per week.

Coal for Messes of Officers of Allies attached to British forces may be drawn on the above scales on repayment.

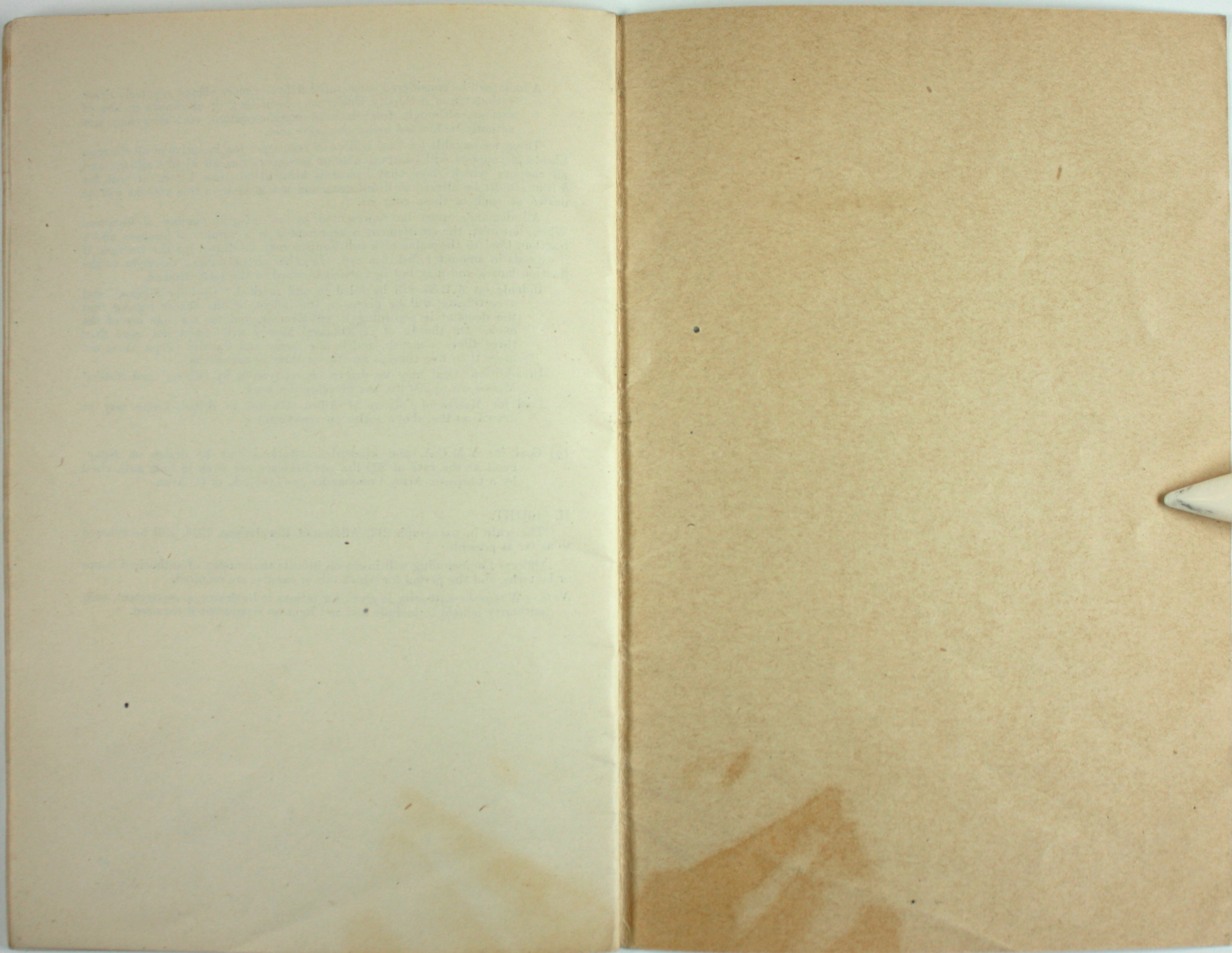
(g) Coal for Y.M.C.A. and kindred institutions may be drawn on repayment at the rate of 200 lbs. per fireplace per week in huts authorized by a Corps or Army Commander or G.O.C., L. of C. Area.

II.—LIGHT.

The scale in paragraph 214, Allowance Regulations, 1914, will be adhered to as far as possible.

Officers Commanding will insert on indents the number of authorized lamps or lanterns, and the period for which oils or candles are required.

Note.—Whenever authority is given for rations to be drawn on repayment, such authority is held to include fuel and light on repayment if required.





This work is licensed under Creative Commons

<http://creativecommons.org/licenses/by-nc/3.0/au/deed.en>

You may use this work for any Non-Commercial Use with attribution to Museum Victoria and the creator.

40538